

# YARDLEY CATTLE CO.

## 48th ANNUAL FOCUS *on the* FEMALE SALE

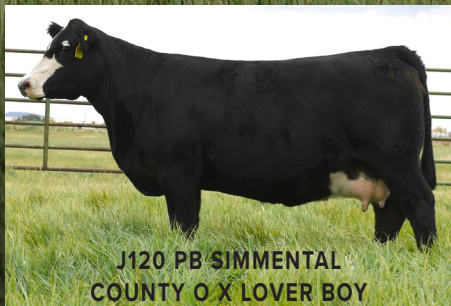
130 BRED HEIFERS AND COWS SELL! PICK OF THE HEIFER CROP!  
SIMMENTAL, ANGUS, SIMANGUS™, & MAINE ANJOU



L165 PB ANGUS  
KR OUTFIT X COLEMAN BRAVO 6313  
REG# 20692267



L214 5/8 AN 3/8 SM  
SAV CATALYST X W/C LOCK N LOAD



J120 PB SIMMENTAL  
COUNTY O X LOVER BOY



H102 1/2 MA 1/2 AN  
IRISH WHISKEY X DUFF NEW EDITION

TO REQUEST A CATALOG PLEASE VISIT OUR WEBSITE OR CALL (812) 525-0359

# FRIDAY, DECEMBER 5TH 2025



[www.yardleycattleco.com](http://www.yardleycattleco.com) • 1pm MST in Beaver, UTAH

Steven Yardley (435) 310-1725 • Gib Yardley (435) 691-8688

View the auction live • [DVAuction.com](http://DVAuction.com)