

# YARDLEY CATTLE CO.

51st ANNUAL BULL SALE



SATURDAY  
**MARCH 9TH 2024**  
BEAVER, UT 1PM MST



# WELCOME

## ***Dear Friends, Fellow Cattlemen, and Valued Customers:***

From the beautiful mountains of Southern Utah, we welcome you to our 51st annual Bull Sale, and to our official 60th year of incorporation at Yardley Cattle Co. What a whirlwind of progression and advancements we have seen transpire throughout those decades. For well over 100 years and five generations our family has been involved in raising cattle right here in beautiful Beaver UT and the surrounding mountains and desert ranges.

The cattle business is our only business and has been for the past 100 years. Purposeful selection and Aling for 55 years has resulted in problem free cattle developed for range conditions and performance. We value and try to incorporate new technologies into our program to consistently improve our herd, including artificial insemination, embryo transfer, carcass ultrasound data, pulmonary artery pressure (PAP) testing, semen and fertility testing, and EPDs. We are also conscious of the fact that structurally correct cattle have to be built right from the ground up and that no derivative number on a paper can make up for fleshing ability, longevity, structural soundness, eye appeal and individual performance. For these reasons we carefully hand select each AI and natural service herd sire to put with our cows. We breed quality cattle with the commercial cattlemen in mind; selecting for traits that enable our mother cows to thrive on the harsh range conditions they run on year-round; moderate made, easy fleshing cattle bred right from the ground up with good hoof and leg structure to trail home 25 miles each Fall, year after year and that can travel one or two miles to water and back each day. We breed cattle that can pack a lunch and push down the scales with depth, width and dimension that have the phenotype to accel in the show ring and industry leading performance to accelerate in the feedlot. Mothering ability, good udders and teat placement, calving ease and calf vigor can be the difference between a live calf and a dead calf in a winter snowstorm on the range, and so we breed our cattle accordingly. With young kids running around and aging parents, calm dispositions are a must.

Our customers are our friends and neighbors, and we are heavily reliant upon you, our loyal repeat customers. It is our hope and we give our best efforts to ensure, that you can buy our cattle with confidence in our cattle and in our program. We stand behind our product with a one-year breeding soundness guarantee and expect that you will get many years of service out of the bulls you purchase.

Our catalog highlights our livelihood and the beautiful scenery that we feel so blessed to run on and call home. We also have incorporated quotes and ideas that have strengthened our faith in Christ, touched us deeply, and helped us in our lives. We hope that they will help you as well with the challenges you face in your own life; we need God and we need each other. We are so blessed to live in a free country and so grateful for the brave men and women who have fought and died to protect and preserve the freedoms we enjoy.

We are especially grateful to Jose Guzman, Cledus Guzman, and Talon Linton for the fine work that they do and the effort they have put in to helping prepare for this sale and run this operation. We couldn't do it without them and appreciate the countless hours and dedication they give to their jobs. We are grateful for Gib and the foundation of quality cattle and excellent ranch facilities that he built up. We are also thankful for our pioneer heritage and their descendants that bridge the gap between us who traversed the plains, and crossed the mountains to tame the wilderness and worship God according to the desires of their heart. We feel a great dept of gratitude for them.

We feel privileged and blessed to be your seedstock provider and we take that responsibility seriously. If you have any questions, concerns, would just like to visit about our operation or the cattle in the offering please don't hesitate to give us a call. Thank you again for your patronage and support.

Sincerely yours for a better cattle industry,

***-Steven & Leslie Yardley and Family***



# SALE

## INFORMATION

### RANCH SALE CONTACTS

Steven Yardley	435-310-1725
Leslie Yardley	435-310-1723
Gib Yardley	435-691-8688
Bret Whittier	435-590-0007
Duke Cox	435-559-8121
Rayne Bagley	435-231-1099

### AUCITONEER & STAFF

#### AUCTIONEER

Steve Bonham: New Castle , OK 405-823-2972

#### RINGMEN

Craig Talkington: Hays, KS 785-623-1789

Ty Groshans: Western Livestock Journal 970-818-6016

### SALE & RANCH STAFF

#### HERD RECORDS

Leslie Yardley 435-310-1723

#### SALES CLERK

Amy Ure, Beaver, UT

#### PAY CLERK

Leslie Yardley, Beaver, UT 435-310-1723

Brenda Oberg, Genola, UT

#### ADVERTISING & CATALOG DESIGN

Chris Petersen, Kanarraville, UT 801-814-0632

#### INTERNET SALES

DV Auction, DVAuction.com 402-316-5460

#### VETERINARIAN

Dr. Evan Yardley, Beaver, UT

Dr. Tyler Sorenson, Gunnison UT

#### BRAND INSPECTOR

Thayne Marshall, Minersville, UT

#### AI TECHNICIAN

Zane Yardley, Beaver, UT

#### RANCH STAFF

Jose Guzman  
Talon Linton  
Cletus Guzman  
Parley Barlow  
James Yardley  
Kade Yardley  
Shawn Yardley

**WEANING WEIGHTS ARE ADJUSTED TO 205 DAYS OF AGE, YEARLING WEIGHTS AND SCAN DATA ARE ALL ADJUSTED TO 365 days of AGE UNLESS\* ALL WEIGHTS AND THEIR ADJUSTMENTS ARE BASED OFF OF CATTLEMAX AND MAY VARY SLIGHTLY FROM THE ASSOCIATION WEIGHTS.**

### TRANSPORTATION

Beaver is 200 miles away from Salt Lake City or Las Vegas, NV, on I-15. From Salt Lake, SkyWest Airline commuter (The Delta Connection) serves Cedar City, which is 50 miles South of Beaver. St. George, UT is 100 miles South of Beaver on I 15. It is served by United, Delta, and American Airlines.

### TRUCKING & DELIVERY

Please leave detailed information with the pay clerk about your trucking needs and arrangements. We will work with you to help find the best and most efficient means for hauling. We will guarantee to have your animals delivered to a central location within 300 miles of your home anyplace in the United States for no more than \$400/head. This guaranteed delivery price does not apply to cattle that have not been fully paid for within ten days of the sale date. No cattle will leave the ranch until paid for in full

### ACCOMODATIONS

Request the Yardley Cattle Company special room rate. Please try to reserve rooms as far in advance as possible to guarantee room rate.

Days Inn, North Interchange	435-438-7800
Butch Cassidy Inn, Downtown	435-438-2438
Quality Inn, South Interchange	435-438-5426
Comfort Inn, South Interchange	435-438-6283

### RANCH & SALE LOCATION

Once you arrive in Beaver, continue into town. At the corners of Center and Main Street, continue West on Center Street (HWY 21). Continue 1.5 miles to the Yardley Black Cow/Calf sign, turn right and proceed 2 miles North and West across the field to our sale barn.

UPON Leaving Hwy 21, traveling North on the gravel road, the horses & cattle do not belong to us until you cross the cattle guard just below our sale barn.

### SALE DAY BARBECUE

There will be a buyers appreciation BBQ lunch on sale day 12:00 pm at our sale barn. Thanks to the Daren Oberg Family of Genola, UT for putting the BBQ together.



## TERMS & CONDITIONS

**TERMS:** Terms of this sale are cash, or a good check, unless arrangements are made prior to the sale. Settlement to be made immediately at the conclusion of the sale before animals are loaded. The right of property title shall not pass until checks have cleared. We reserve the right to keep or resell any animal not paid for in full within 60 days of the sale.

**BIDDING:** All animals will sell as single lots to the highest bidder. Any disputes or challenges regarding bids will be settled by the auctioneer whose decision will be final.

**RISK:** All animals are at the owner's risk prior to their sale and become the property of the buyer as soon as the animal is declared sold by the auctioneer at which time the buyer assumes all risk.

**HEALTH:** Every bull in this sale, to the best of our knowledge, is free of any disease and will be eligible for interstate transport. Bulls were Dectomax treated. They have been vaccinated twice for IBR, P13, BVD, BRSV, 8-way Blackleg, One Shot Pasturella, and Enforce.

**ANNOUNCEMENTS:** Announcements from the auction block will take precedence over any printed matter, and any other announcements.

**TRUCKING:** All trucking is the responsibility of the buyer, but we will help make arrangements. Every effort will be made to minimize costs to the buyer. We can only get these bulls delivered to central points. All cattle must be paid for in full before leaving the ranch.

**GUARANTEE:** Every bull has been tested for Tric and semen evaluated by a licensed veterinarian. We will guarantee the bulls selling in this sale to be fertile at the time of sale. Several of the bulls in this sale are of "Herd Sire" quality. If the buyer chooses to have semen collected on a bull, Yardley Cattle Company can not guarantee that the semen will freeze. **KEEPING BULLS TILL MAY 15TH:** We can do this but encourage you to insure them as the risk is the responsibility of the

buyer. \$3.00 per head per day will be charged until the bulls are picked up.

**LIABILITIES:** Although accidents at livestock sales seldom occur, everyone attending this sale does so at their own risk. The owners and employees of Yardley Cattle Company assume no liability, legal or otherwise, in the event of an accident, bodily injury, theft, act of God, errors in catalogs or omissions, or percentage verification. We try to keep the most accurate records possible and have bull tight fences, but on a rare occasion, accidents of breeding occur that we are not aware of or cannot control. We will do everything we can to determine the correct parentage, but cannot guarantee it. **REGISTRATIONS:** REGISTRATION PAPERS WILL ONLY BE FURNISHED IF REQUESTED AT THE TIME OF SETTLEMENT AT THE CONCLUSION OF THE SALE OR WITHIN 3 WEEKS. If requested later, buyer must pay additional registration fees. Leave the name and address to which you would like your bulls transferred on your sale slip when you settle up. Please print so that it is legible.

**CONTRACT:** The above Terms and Conditions of this sale shall constitute a contract between buyer and seller and be equally binding on both. Animals that are resold following the sale shall constitute a separate transaction and the rights and obligations of the two parties connected thereto are not covered by these Terms and Conditions. Late in the summer it is necessary to mix breeding groups. Only our own personal herd sires are taken on the mountain. Select groups of cattle will stay with one sire all summer long, but on the majority of late calving cows we cannot guarantee sire parentage unless a parentage identification test is ran. IGENITY labs runs this procedure for around \$30. When you get your bulls home put them with another bull or cow and don't leave them alone in a corral. This makes them wild.

**Due to the size of the offering it is impossible to picture every bull. There are many quality bulls that may not be pictured that will fit your program. Feel free to call us prior to the sale. We are happy to help you select a bull to that fits your program best!**

**Steven Yardley: 435-310-1725 - Leslie: 435-310-1723 - Gib: 435-691-8688**

### BIDDING:

All potential buyers MUST have a registured buyer number at the time of sale, or their bid is invaild.

### PRE-SALE REGISTRATION FOR ATTENDING BIDDERS AND ABSENTEE BIDDERS

If you would like to register as an absentee bidder please call Leslie at 435-310-1723. You may be required to list your banks telephone number and your drivers license number. All absentee buyers must be pre-registered. Any lots purchased by absentee bidders must be paid for in full via invoiced ACH, check, cash, or wire transfered on Monday, March 13th prior to load-out or delivery unless prior arrangements have been made. We appreciate your cooperation.

### WORK WITH ONE OF US TO FILL YOUR ORDER

If you are unable to attend the sale in person, or via DVAuction, please contact us, as we would be happy to accommodate you to the best of our ability. All bids are handled with strict confidentiality.

### BIDDING VIA DVAUCTION.COM

Bidding online via DVAuction is fast and easy. If you do not have an account, please visit DVAuction.com. You can create an account, log on to watch and bid on sale day. (We encourage you to set up your account before sale day and log on with plenty of time before the actual sale begins).

## VIEW THE AUCTION LIVE

Bid online...you're ringside from the comfort of home!

**DVAUCTION.COM**

Register to bid today!

Visit DVAuction.com If you are a first time user click on create account. After you create an account, you can request buying or bidding credentials. Upon approval you will receive a text from us saying that you have been approved by DVAuction.com. After you have been approved, getting a buyer number for a sale is very simple. You just visit the sale page for the auction and click the BID ONLINE button. Then there will be a GET BUYER NUMBER button that will automatically sign you in for the auction and give you a number. For more information contact DVAuction at 402-316-5460



## THESE BULLS WILL SELL IN EVERYONES PRICE RANGE.

We cull bulls from branding up until the sale for structural soundness, quality, breeding soundness, and temperament. Not every bull is destined to sire calves. AS SEEDSTOCK PRODUCERS WE TAKE THE RESPONSIBILITY TO MARKET QUALITY BULLS SERIOUS. We realize that your success depends upon our breeding program and we strive to have quality from the first lot sold to the last bull to walk through the sale ring. In our sale last year 66 head sold for \$4,000 or less, 59 head sold for \$3,500 or less, 37 sold for \$3,250 or less, 21 sold for \$3,000 or less, 15 sold for \$2,750 or less, and 8 sold for \$2,500.

### FIRST YEAR BREEDING GUARANTEE

All bulls selling for \$3,500 or more will be covered 50% by Yardley Cattle Company if they are injured during their first breeding season. Breeding season is defined as the 90-day period following the first turnout of the bulls. 50% of the value of the injured bull will be given as credit in a future sale or toward a replacement bull if one is available. ALL INJURED BULLS MUST BE DIAGNOSED BY A VETERINARIAN AND WE MUST RECEIVE THIS AND A LETTER FROM YOU IN WRITING. Please notify us as soon as possible should an injury occur and prior to the injured bull being sold for salvage. If at all possible we would like the injured bull to be returned to us. ALL CLAIMS MUST BE MADE BY OCTOBER 1st. We will not replace a dead animal for any reason.

### RETAINING 1/3 SEMEN INTEREST ON ALL BULLS!

SEMEN INTEREST: We are retaining at least 1/3 semen interest in all bulls selling. The new owners of the bulls will have full possession and all salvage value. If semen is sold we retain one-third of all revenue. There will never be more than 2 or 3 bulls a year that we will want to collect.

### YARDLEY CATTLE CO INCENTIVE PROGRAM (YIP)

Yardley Cattle Company has spent generations working to bring you some of the best genetics in the country. It is our greatest desire that our hard work pays off for you and your operation. To qualify for Yardley Cattle Co's Incentive Program (YIP) the individual or ranch must meet the following criteria:

- Bulls individual purchase price must meet or exceed \$3,500.00 per bull. For example, buying 3 bulls above \$3,500.00 per bull and you will receive a 3% discount. If you buy 4 bulls and 3 are above \$3,500 per bull, but the 4th bull is purchased at \$3,000, you will receive a 3% discount, whereas the 4th bull would not qualify for a discount.
- All purchases must go to the same individual or ranch. Bulls cannot be lumped together between neighbors or friends.
- At any time Yardley Cattle Co believes that the YIP is being abused by any individual or ranch, the YIP will no longer apply to that individual(s) or ranch(es).

**3 Bulls - 3%**

**4 Bulls - 4%**

**5 Bulls - 5%**

**6 Bulls - 6%**

**7 Bulls - 7%**

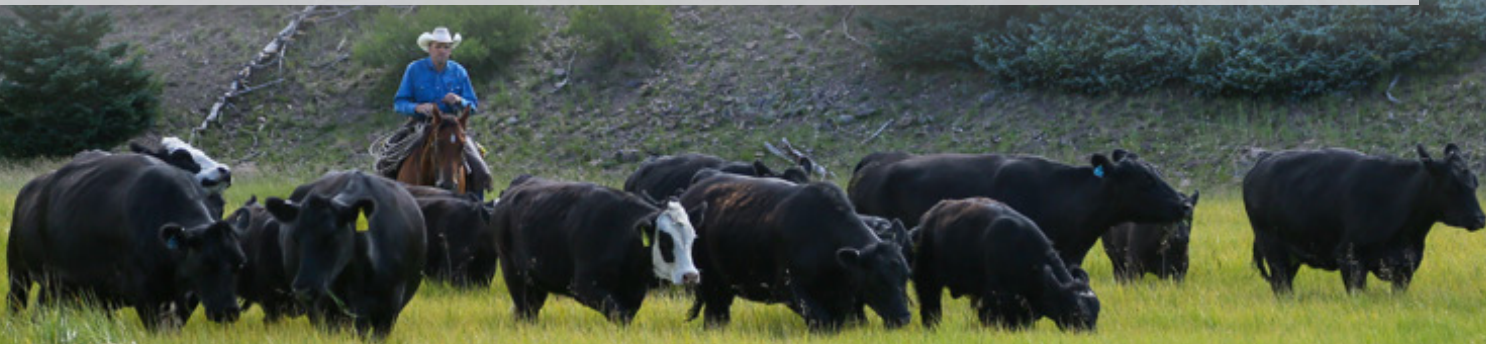
**8 Bulls - 8%**

**9 Bulls - 9%**

**10 Bulls Plus - 10% Discount**

### PLEASE BRAND YOUR CATTLE WHEN YOU GET HOME!

Our bulls are not pampered and are not overly fat. They are developed on high roughage rations for comparison only and not for maximum gain. You will not be paying for over fleshing that will melt away as the breeding season progresses. By not force feeding these bulls, you can be assured they will be sound, athletic, and ready to service cows. They are grown in big lots where they get lots of exercise, so they can take the toughest ranges. These bulls are grown mostly on hay with a 50/50 alfalfa grass mix with less than 1% of their body weight in grain.




We have always concentrated on producing a functional, balanced, all purpose beef animal. One that is thick and moderate framed, not too big or too small, and that has a natural fleshing ability. If a cow has feed, we expect her to stay fat while raising a 700 lb. calf without creep. We believe in a balance between performance, eye appeal, and maternal traits. Above all, we have eliminated the problem cattle. To achieve balance, ranchers need cattle that are not necessarily the tops in all traits, but they can't be weak in one single trait.

## THE FACTS ABOUT THE PAP TEST

Brisket Disease of cattle is the result of right congestive heart failure, but is brought on specifically by effects of the lower oxygen pressures present when cattle are kept at high altitudes above 7,000 feet in elevation. The test is a measure of the pulmonary artery pressure (PAP). We have been testing our bulls for quite a few years. Most of our Simmentals summer from 9,000 - 10,000 feet elevation and we have very very few of them ever affected by brisket disease since they originated

**IF YOU RUN BELOW 7,000 FEET ELEVATION, PAP SCORES SHOULD NOT BE CONSIDERED WHEN SELECTING BULLS.**

in the alps of Switzerland and were bred for higher elevation. Dr. Tim Holt of Colorado State University is the Country's greatest authority on this disease and has tested many thousands of cattle. Our bulls are tested in Beaver at 6,000ft. elevation. A pap score under 44 is low risk, 45-49 is moderate risk, and above 50 is high risk for cattle running above 7,000 feet of elevation. If you run under 7,000 feet elevation, PAP tests do not generally need to be taken into consideration.



We appreciate the dedication, long hours, talented work, and attention to detail, as well as the friendship of Jose Guzman, Cletus Guzman, and Talon Linton.

## WHY USE YARDLEY BULLS

- The feeders pay a premium for calves sired by our bulls because they are the best gainers and they have the look, eye appeal and uniform phenotype.
- Their daughters will be productive, structurally sound cows.
- Their calves will weigh 25 to 100 lbs more at weaning.
- These bulls are wintered in big lots on half grass/alfalfa and only 1% grain.
- They are born unassisted on the range and walk 25 miles to and from the summer range that goes to 10,200 ft. elevation, so they have to be structurally correct
- Our bulls are raised and developed at high altitudes and are PAP tested as a selection tool for those who run in higher elevations.
- We never creep feed our cattle, their birth to weaning growth is based solely on their ability to perform on their mothers.
- Our cows winter on desert range without hay. They have natural fleshing ability to stay fat on grass and take care of themselves.
- All bulls are performance tested and backed by our first year breeding guarantee.
- They have proven themselves to adapt to all environments and have sold into 32 states, Canada and Mexico.
- Simmental and Simmental crosses are some of the most sought after cattle by order buyers, feedlots and for replacement females.
- Yardley Bulls are bred with the commercial cattlemen in mind.
- These are not ordinary cattle. They have more thickness, depth, muscling, fleshing ability, performance, and structural correctness in moderate sized packages.
- Cross breeding pays. Hybrid vigor increases the performance and longevity of your cow herd.
- You don't have to baby and pamper them.
- This is our livelihood. We work hard to ensure these cattle will do their best to increase the production of your herd.
- Your success is our success.



## UNDERSTANDING THE DATA

### 1 YARDLEY LAD K459

5/8 SM 5/16 AN 1/16 MA BD 3/22/2022 ASA 4168076							DATA	
YARDLEY HIGH REGARD							BW	0.5
YARDLEY HILIGHT							WW	66.6
MISS YARDLEY Z28							YW	98.1
MISS YARDLEY Z28							CE	10.1
WS STEPPING STONE							BW	80
MISS YARDLEY D33							WW	789
MISS YARDLEY W154							YW	1361
YARDLEY IMPRESSIVE							MK	24.9
MISS YARDLEY T68							PAP	65
S A V MUSTANG								
MISS YARDLEY X155								
W/C LOCK DOWN								
WS MS UPGRADE Z15								
MAX YARDLEY CHEROKEE								
MISS YARDLEY J200								
H/P/S	WDA	TG	RIB FAT	REA	% IMF	DWR		
P	3.76	3.58	0.15	13.83	2.13	5@105		

Expected Progeny Difference (EPD), is the prediction of how future progeny of each animal are expected to perform relative to the progeny of other animals listed in the database. EPDs are expressed in units of measure for the trait, plus or minus. Interim EPDs may appear on young animals when their performance has yet to be incorporated into the American Angus Association National Cattle Evaluation (NCE) procedures. This EPD will be preceded by an "I", and may or may not include the animal's own performance record for a particular trait, depending on its availability, appropriate contemporary grouping, or data edits needed for NCE.

Calving Ease Direct (CE), is expressed as a difference in percentage of unassisted births, with a higher value indicating greater calving ease in first-calf heifers. It predicts the average difference in ease with which a sire's calves will be born when he is bred to first-calf heifers.

Birth Weight EPD (BW), expressed in pounds, is a predictor of a sire's ability to transmit birth weight to his progeny compared to that of other sires.

Weaning Weight EPD (WW), expressed in pounds, is a predictor of a sire's ability to transmit weaning growth to his progeny compared to that of other sires.

Yearling Weight EPD (YW), expressed in pounds, is a predictor of a sire's ability to transmit yearling growth to his progeny compared to that of other sires.

Maternal Milk EPD (MK), is a predictor of a sire's genetic merit for milk and mothering ability as expressed in his daughters compared to daughters of other sires. In other words, it is that part of a calf's weaning weight attributed to milk and mothering ability.

H/P/S: Horned (H), Polled (P), Scurred (S)

WDA: Weight per Day of Age= ((Weight-Birth Weight)/Age in Days)

TG: Test Gain=((Weight-Weaning Weight)/Days on Feed)

Rib Fat: inches of fat over the Rib Eye muscle

REA: Rib Eye Area measured in inches and adjusted to Yearling Age.

%IMF: % Intermuscular Fat in the rib eye muscle

DWR: Dam's Weaning Ratio on her number of calves and how those calves weaned compared to the average during those years.

-Example: 5@110; bull's dam has had five calves that have weaned at 110% of the average.

## The Key to the Puzzle = Balance

It's the hardest thing to keep in the front of our minds. We always want to think that bigger is better, or we buy bulls based on spread EPD's or we choose a bull because he has one trait that really stands out. We've all been guilty of it, but the real key is "balance," the ones that do all things well. I really believe that this is one of the hardest, if not the hardest, hurdle in breeding cattle. If we can stay focused on this, it will make us more profitable and better cattle breeders.

## SUPERIOR LIVESTOCK AUCTION

Many of our customers like to sell their calves in Superior Sales. We have a "logo" that Superior puts on when the calves being sold are out of our bulls. The feeders pay a premium for calves out of our bulls because they know of the superior performance. This with eye appeal, structural correctness and exceptional carcass traits are coupled with docility and hybrid vigor. We have spent our lives breeding these cattle to perform and bring this premium. We pay Superior \$25/load to put our logo on the screen when our loyal customers' cattle come in. We are happy to do

this to assist you in getting top dollar for your calves. People who buy your calves will get a top return on their investment through our top quality genetics and be greatly satisfied with their purchase. In order to ensure this, we request that a minimum of 60% OF YOUR CALVES ARE OUT OF OUR BULLS/LOAD ADVERTIZED. This protects our quality reputation and ensures that whoever buys the calves are getting the advertised genetics. Please note that Superior will call us prior to placing our logo on any load selling to confirm that this is the case.



# **YARDLEY FAMILY**



**Steven and Leslie Yardley Family**



**Tyler getting mauled by a Grizzly bear on our trip to Missouri.**



**Shawn's 13th birthday!**



**Calf feeding crew 2024.**



**Elsie and best friend Lena**



**James' Senior year running cross country**



**Family trip 2023, Carthage Illinois.**

**GOD LOVES ALL OF HIS CHILDREN AND HAS A VISION FOR EACH OF US.**

**- RUSSEL M. NELSON**





**Gib and Denise Yardley**



My great grandfather, James Pace Anderson, was one of the original first 10 men to settle Beaver in February of 1856. His wife came with the Martin and Willie handcart company and about froze to death in Wyoming. She became the first schoolteacher in Beaver. This whole area was a desert that no one wanted. Brigham Young led our people out here so they could worship God as they so desired. Mobs ran the members of The Church of Jesus Christ of Latter-Day Saints out of Ohio, Missouri, Illinois and Iowa. Back in those areas the Lord watered the land with rain. Out here they had to build ditches and irrigate.

God blessed our ancestors and the other pioneers who settled here, and they built a thriving and prosperous society. They settled all over the west wherever there was a stream of water. They made the desert blossom as a rose. My grandpa and his two brothers started raising cattle in the late 1800's and we have been raising them since. His younger brother, Al, would take a herd of cattle 200 miles to a winter range where it never snowed. He'd live in a tent on potatoes, coffee and salt pork.

In a few days I'll be 91 years old. I have spent my entire life in the cattle business. When I was a boy we had no tractors or trucks. Everyone did all their farming with teams or horses. There were no trucks or trailers, when we moved cattle we had to drive them horseback, and I grew up loving horses. One of the happiest days in my life was when I was 13 years old, I traded for a black and white paint mare. I still have some of her descendants, 78 years later.

We raise some great quarter horses. Last fall the best paint mare that I ever raised or ever saw was struck by lightning. She was bred to one of the top pain horses in the country. I shed more tears over her than anything else in my life. I have ridden lots of top horses but this mare's mother, Milly, was the best mare I ever owned or rode.

When I was in high school I bought a little bunch of sheep, about 20 head, and I enjoyed them because I had raised some of them as doggie lambs. I had some friends that had a range herd of sheep and they lambded them on top of some hills about 14 miles southwest of here.

I would ride a horse up there and stay overnight and the next morning they would give me 4 doggie lambs. I would put 2 each in a gunny sack and bring them home and feed them on a bottle.

I sold the sheep and bought some registered Hereford cows. In those days everyone had Herefords. One year after high school I was drafted in the Army and spent 15 months in Korea, right after that war was ended. A month after I got out of the Army, I was called on a mission for our church and spent it in 6 New England States and the 4 Maritime provinces of Canada for 10 months. It got so cold up there that I've never thawed out since and I'm always cold.

After coming home, I went in with my Dad and we raised mostly registered Herefords and sold bulls. Then I had a friend that talked me into breeding those cows artificially to a new breed that had just been imported to Canada from France and Switzerland and I have raised Simmentals ever since. We got some Angus cows and soon replaced the Herefords.

I went to Canada to see those first imported Simmentals and while there I saw a solid red bull that I thought was one of the best bulls I had seen. They said he was Cunia, a Maine Anjou bull imported from France. So I got semen from him and have been raising Maines since.

For many years, I used to show feeder calves and I had many Grand Champion - Pens of 5, at the Cow Palace, Denver, Kansas City and Louisville. I showed the 1st pen of 5 feeder heifers in Denver. That was 50 years ago and they brought \$1,800 each. They sold so well that they've been showing heifers and selling them ever since.

Thank you for your confidence in our genetics. It is an honor and privilege to work and rub shoulders with you. Your success is our success and we wish you the very best in your cow herds, large and small. If we can do anything to help or assist you in your herd sire selection, please feel free to give us a call anytime. GOD BLESS YOU AND YOURS AND GOD BLESS AMERICA. We look forward to seeing you sale day.

**- Gib Yardley**





# LONGITUDE

## 1 YARDLEY LONGITUDE L282

PB SM		BD 2/6/2023	ASA 4242848	DATA		
LOVER BOY	DURACELL	DREAM ON		BW	78	
		HTP SVF HONEYDEW		WW	747	
	RIGHT TO LOVE 015U	BUILT RIGHT		YW	1330	
		QUEENS VALENTINE R9		CE	12.8	
	YARDLEY ABUNDANCE	W/C BANCHOR		BW	0.2	
MISS YARDLEY J18		MISS YARDLEY E232		WW	93.4	
		LOVER BOY		YW	140.4	
	MISS YARDLEY G15	MISS YARDLEY E161		MK	30.6	
				PAP	43	
H/P/S	WDA	TG	RIB FAT	REA	% IMF	DWR
P	3.41	3.64	0.24	15.17	2.1	1@107

What a way to start the sale with three phenomenal paternal brothers sired by the impeccable Loverboy! Longitude combines a hearty amount of length, depth and dimension with a light birth weight and off the chart performance out of a first calf heifer. His phenotypically flawless package and freedom of movement with tremendous leg and foot structure make Longitude a bull to put your program on the map! He reads as pretty on paper and as he does on the hoof ranking in the top 10% for WW, top 15% for YW, top 25% ADG, top 10% Milk, top 3% MWW, top 10% Doc, Top 20% CW and top 15% TI. **Selling Half Interest, Half Possession with the option to double down on the hammer price for full possession and 2/3 semen interest.**



Loverboy, the famous sire of Longitude

**WEANING WEIGHTS ARE ADJUSTED TO 205 DAYS OF AGE, YEARLING WEIGHTS AND SCAN DATA ARE ALL ADJUSTED TO 365 days of AGE UNLESS\***  
**ALL WEIGHTS AND THEIR ADJUSTMENTS ARE BASED OFF OF CATTLEMEX AND MAY VARY SLIGHTLY FROM THE ASSOCIATION WEIGHTS.**





# LATTITUDE

## 2 YARDLEY LATTITUDE L283

3/4 SM 1/4 AN BD 2/6/2023 ASA 4242849

DURACELL  
**LOVER BOY**  
RIGHT TO LOVE 015U  
  
YARDLEY ABUNDANCE  
**MISS YARDLEY J64**  
MISS YARDLEY G605

DREAM ON  
HTP SVF HONEYDEW  
BUILT RIGHT  
QUEENS VALENTINE R9  
W/C BANCHOR  
MISS YARDLEY E232  
WS STEPPING STONE  
MISS YARDLEY W151

DATA	
<b>BW</b>	<b>91</b>
<b>WW</b>	<b>751</b>
<b>YW</b>	<b>1315</b>
<b>CE</b>	<b>6.2</b>
<b>BW</b>	<b>2.4</b>
<b>WW</b>	<b>92.8</b>
<b>YW</b>	<b>141.7</b>
<b>MK</b>	<b>30.9</b>
<b>PAP</b>	<b>36</b>

H/P/S	WDA	TG	RIB FAT	REA	% IMF	DWR
<b>P</b>	<b>3.38</b>	<b>3.52</b>	<b>0.24</b>	<b>13.96</b>	<b>2.63</b>	<b>1@107</b>

Lattitude is an interesting breed piece that brings together all the right parts and pieces in a balanced, smooth package. His stylish grandam is a maternal sister to our herd sire Ensign! Their dam, W151 was one of the deepest bodied, stout hipped, fanciest blazed faced donors we have had on the ranch to date. She had a proven production packed track record that boasts of power and performance. W151 continually passed the performance along to her offspring with a WW ratio of 111 averaging at 713#. W151 was an \$8,000 featured donor in our '17 sale. Good cow families matter and Yardley Lattitude hails from one of the best!



Y1 Ensign, maternal brother to L283's dam



Stout made maternal grandam of Lattitude





# LONGEVITY

## 3 YARDLEY LONGEVITY L276

PB SM		BD 2/4/2023	ASA 4242842	DATA		
LOVER BOY	DURACELL		DREAM ON	BW	91	
			HTP SVF HONEYDEW	WW	727	
			BUILT RIGHT	YW	1195	
	RIGHT TO LOVE 015U		QUEENS VALENTINE R9	CE	6.9	
	YARDLEY TOP GUN		YARDLEY TOP NOTCH	BW	2.1	
MISS YARDLEY J177			MISS YARDLEY Y134	WW	86.7	
			YARDLEY NORTH FORCE	YW	124	
	MISS YARDLEY F166		MISS YARDLEY Y147	MK	31.7	
				PAP	33	
H/P/S	WDA	TG	RIB FAT	REA	% IMF	DWR
P	3.1	2.93	0.22	12.86	2.74	1@106

You'll love the length of body and powerful hip Longevity possesses. His young dam did a tremendous job on this, her first calf weaning him at 727#! Her maternal brother was an impeccable feature \$7,000 feature of our '21 sale selected by Navaro Cattle Company of Montrose CO. Longevity promises years of impressive power packed calves loaded with performance and eye appeal.



Powerful maternal brother to the dam of Longevity







# BACHELOR

## 4 YARDLEY BACHELOR L385

PB SM		BD 3/12/2023	ASA 4242934	DATA	
W/C BANCHOR	CCR ANCHOR		CCR COWBOY CUT	BW	94
			CCR MS BARB 2120Z	WW	767
	W/C MISS WERNING 46B		REMINGTON LOCK N LOAD	YW	1263
			MISS WERNING 715T	CE	9.8
	K-LER MAKE IT RAIN		FOUNDATION	BW	2.2
MISSISSIPPI BELLE			HCC/CSC BEYONCE	WW	82.5
	MISSISSIPPI BELLE		STEEL FORCE	YW	116.3
			DANR WILD POP	MK	24.6
				PAP	42

H/P/S	WDA	TG	RIB FAT	REA	% IMF	DWR
P	3.5	3.1	0.18	14.19	2.86	8@104

Bachelor's dam is no stranger to sale-leading bulls. In '18 she produced our \$15,000 high selling bull, Yardley Topline, selected by our good friends the Allen Brothers of Oregon. She continues to impress with a track record of 8@104 WW ratio average. Yardley Bachelor has all of the credentials to work in every facet of the industry.



Soggy maternal brother of Bachelor



Yardley Topline, \$15,000 maternal brother of Bachelor







## 5 YARDLEY PICKUP MAN L346

3/4 SM 1/4 AN BD 2/28/2023 ASA 4242901

BETTER BELIEVE IT  
**LLSF DRAFT PICK**  
 KENCO STEEL MAGNOLIA  
 SAV CATALYST  
**MISS YARDLEY F65**  
 MISS YARDLEY D148

PAYS TO BELIEVE  
 LLSF CAYENNE UP401  
 STEEL FORCE  
 SAFN SHES GLAMOROUS  
 SAV RESOURCE  
 SAV EMBLYNETTE 0491  
 MR HOC BROKER  
 MISS YARDLEY A203

DATA	
<b>BW</b>	<b>103</b>
<b>WW</b>	<b>724</b>
<b>YW</b>	<b>1406</b>
<b>CE</b>	<b>8.2</b>
<b>BW</b>	<b>4.1</b>
<b>WW</b>	<b>95.3</b>
<b>YW</b>	<b>151.9</b>
<b>MK</b>	<b>22.6</b>
<b>PAP</b>	<b>48</b>

H/P/S	WDA	TG	RIB FAT	REA	% IMF	DWR
<b>P</b>	<b>3.78</b>	<b>4.26</b>	<b>0.22</b>	<b>14.21</b>	<b>2.5</b>	<b>4@105</b>

It's impressive how some cows produce the cream of the crop that floats to the top every year. Pickup Man's dam is such a cow. In '22 she produced our \$9,000 lot 2 bull, Yardley Gunslinger selected by our good friends and longtime customers, the Kunzlers of Park Valley UT. Pickup man lead out as one of our best gainers and eye appealing bulls.

-Pickup Man's sire, Draft Pick, was the lead off bull in Lee's Champion Pen of 5 Purebreds in OKC Cattlemen's Congress in 2021 and followed that up with Reserve National PB bull calf Champion in the National show. He had a 17.2 REA and a 3.16 IMF score at the pen show in Oklahoma. Pickup Man ranks in the top 4% of the breed for WW, top 5% YW, top 10% ADG, top 20% MWW, top 10% CW and top 15% REA.



Stout built maternal brother to the dam of Pickup Man



Impressive maternal brother of Pickup Man





# LOGISTIC

## 6 YARDLEY LOGISTIC L295

PB SM		BD 2/12/2023	ASA 4242861	DATA		
LOVER BOY	DURACELL	DREAM ON		BW	76	
		HTP SVF HONEYDEW		WW	711	
	RIGHT TO LOVE 015U	BUILT RIGHT		YW	1295	
		QUEENS VALENTINE R9		CE	12.4	
	YARDLEY ABUNDANCE	W/C BANCHOR		BW	0.4	
MISS YARDLEY J46		MISS YARDLEY E232		WW	88.3	
		SIXTEEN STEP		YW	134.3	
	MISS YARDLEY G137	MISS YARDLEY X69		MK	30.5	
				PAP	46	
H/P/S	WDA	TG	RIB FAT	REA	% IMF	DWR
P	3.31	3.65	0.18	13.68	3.14	1@105

Loverboy son's continually find their way to the top of the sale order every year! Little wonder Loverboy has been the top Simmental sire at Cattle Visions for three years running. With sons like Logistic it's easy to see why with moderate birth weights, top of the line performance and quality structure. Let Logistic figure out the details in moving your herd to the next level. Logistic has an equally impressive EPD profile, ranking top 10% MILK & MWW, 20% WW, DOC, & CW, 25% YW & TI, 30% ADG.



THSF Lover Boy, the popular sire of Logistic

**TO LAUGH OFTEN AND MUCH; TO WIN THE RESPECT OF INTELLIGENT PEOPLE AND THE AFFECTION OF CHILDREN; TO EARN THE APPRECIATION OF HONEST CRITICS AND ENDURE THE BETRAYAL OF FALSE FRIENDS; TO APPRECIATE BEAUTY; TO FIND THE BEAUTY IN OTHERS; TO LEAVE THE WORLD A BIT BETTER WHETHER BY A HEALTHY CHILD, A GARDEN PATCH OR OF REDEEMED SOCIAL CONDITION; TO KNOW THAT ONE LIFE HAS BREATHED EASIER BECAUSE YOU LIVED HERE. THIS IS TO HAVE SUCCEEDED. - RALPH WALDO EMERSON**





# ACCOMPLISHMENT

## 7 YARDLEY ACCOMPLISHMENT L270

3/4 SM 1/4 AN	BD 2/2/2023	ASA 4242836	DATA
PAYS TO BELIEVE	PAYS TO DREAM		<b>BW</b> 73
<b>SFI ACHIEVEMENT</b>	URABABYDOLL U194		<b>WW</b> 755
SFI MISS LACEY	HOOKS SHEAR FORCE		<b>YW</b> 1352
	SFI MISS ALLEY Z12		<b>CE</b> 16.3
YARDLEY TOP NOTCH	SANDEEN UPPER CLASS		<b>BW</b> -0.9
<b>MISS YARDLEY J56</b>	HSF VICTORIA P30		<b>WW</b> 84
MISS YARDLEY Y87	OCC JET STREAM		<b>YW</b> 133.5
	GSK MISS SAPHIRE		<b>MK</b> 25.5
			<b>PAP</b> 40



Bold maternal brother to the dam of Accomplishment

H/P/S	WDA	TG	RIB FAT	REA	% IMF	DWR
<b>P</b>	<b>3.47</b>	<b>3.73</b>	<b>0.31</b>	<b>14.74</b>	<b>2.35</b>	<b>1@108</b>

Accomplishments maternal line is loaded with cow power to ensure consistent quality. His maternal grandam is still going strong with a 13@103 WW ratio including a \$7,000 son and several beautiful daughters in production. Her dam, in turn, produced two donors S504, T66, a \$7,500 son selected by Rayne Bagley of Greenwich UT, and Yardley Blushing Black a feature show heifer selected by Jones Show Cattle of Ohio. S504 produced our herd sires Zion and Embark and a \$14,500 daughter selected by Cory Reins of NE. T66 produced the high selling Angus of our '15 sale, \$18,000 Yardley Cornerstone selected by Lee Stremsterfer of IL and John Griswold of OK. CALVING EASE COUPLED WTH EXPLOSIVE GROWTH!

**IF YOU ARE NOT PROACTIVE IN EDUCATING YOUR DESIRES, THE WORLD WILL DO IT FOR YOU. EVERY DAY THE WORLD SEEKS TO INFLUENCE YOUR DESIRES, ENTICING YOU TO BUY SOMETHING, CLICK ON SOMETHING, PLAY SOMETHING, READ OR WATCH SOMETHING. ULTIMATELY, THE CHOICE IS YOURS. YOU HAVE AGENCY. IT IS THE POWER TO NOT ONLY ACT ON YOUR DESIRES BUT ALSO TO REFINE, PURIFY, AND ELEVATE YOUR DESIRES. AGENCY IS YOUR POWER TO BECOME. EACH CHOICE TAKES YOU CLOSER THAN FURTHER FROM WHAT YOU ARE MEANT TO BECOME; EACH CLICK HAS MEANING. ALWAYS ASK YOURSELF, "WHERE WILL THIS CHOICE LEAD?" DEVELOP THE ABILITY TO SEE BEYOND THE MOMENT. -RANDALL L. RIDD**





# STANDUP

## 8 YARDLEY STANDUP L289

3/4 SM 1/4 AN		BD 2/9/2023	ASA 4242855	DATA		
LOVER BOY <b>YARDLEY STANDOUT</b> MISS YARDLEY C136	DURACELL RIGHT TO LOVE 015U YARDLEY HIGH REGARD MISS YARDLEY Y22		<b>BW</b>	<b>83</b>		
			<b>WW</b>	<b>740</b>		
			<b>YW</b>	<b>1278</b>		
			<b>CE</b>	<b>10.7</b>		
YARDLEY TOP GUN <b>MISS YARDLEY J181</b> MISS YARDLEY X126	YARDLEY TOP NOTCH MISS YARDLEY Y134 SVF/HTP PRESSURE POINT MISS YARDLEY S60		<b>BW</b>	<b>1.3</b>		
			<b>WW</b>	<b>84.5</b>		
			<b>YW</b>	<b>126.5</b>		
			<b>MK</b>	<b>30.7</b>		
				<b>PAP</b>	<b>44</b>	
H/P/S	WDA	TG	RIB FAT	REA	% IMF	DWR
P	3.3	3.36	0.23	14.82	2.91	1@106

Standup is a wide topped, massive hipped, strong boned breed piece with a big hoof and excellent structural soundness. His maternal grandam was one of prettiest red donors I have ever encountered. She was a beautiful herd matron, with a perfect udder and teat attachment. She always stayed fat and weaned a big calf, a whopping 712# average, including our leadoff lot one bull in '18, \$9,500 Clear Cut, purchased by our good friends the Kunzlers of Park Valley, UT and our \$14,000 high selling red bull of our '21 sale Yardley Excellence selected by Bill Carsten of Hotchkiss CO. Several of her beautiful daughters complement our herd including Standup's dam.



Cornerstone donor and grandam of Standup



Clear Cut, attractive maternal brother to the dam of Standup



\$14,000 maternal brother to the dam of Standup





# MONEY IN THE BANK

## 9 Y1 MONEY IN THE BANK L448

3/4 SM 5/32 AN 3/32 MA BD 3/25/2023 ASA 4242990

CCR ANCHOR  
**W/C BANCHOR**  
 W/C MISS WERNING 46B  
 SFG THE JUDGE  
**MISS YARDLEY G16**  
 MISS YARDLEY E226

CCR COWBOY CUT  
 CCR MS BARB 2120Z  
 REMINGTON LOCK N LOAD  
 MISS WERNING 715T  
 CCR COWBOY CUT  
 SFG QUEEN B01  
 LOVER BOY  
 MISS YARDLEY B50

DATA	
BW	90
WW	767
YW	1252
CE	10.9
BW	0.9
WW	82.5
YW	117.7
MK	26.1
PAP	43

H/P/S	WDA	TG	RIB FAT	REA	% IMF	DWR
S	3.42	3.03	0.29	12.55	3.82	4@106

Money in the Bank is a sure bet sire that combines a tremendous amount of real-world depth with thickness, style, and structural correctness. He has off the chart BW to WW growth; his stunning dam has a notable 4@106 WW ratio average.



Handsome maternal brother to the dam of Money in the Bank

**DO YOU WANT TO CHANGE THE SHAPE OF YOUR LIFE?  
 CHANGE THE SHAPE OF YOUR DAY.  
 DO YOU WANT TO CHANGE YOUR DAY?  
 CHANGE THIS HOUR.  
 CHANGE WHAT YOU THINK, FEEL, AND DO AT THIS VERY MOMENT.  
 A SMALL RUDDER CAN STEER A LARGE SHIP.  
 SMALL BRICKS CAN BECOME MAGNIFICENT MANSIONS.  
 SMALL SEEDS CAN BECOME TOWERING SEQUOIAS.  
 MINUTES AND HOURS WELL SPENT ARE THE BUILDING BLOCKS OF A LIFE WELL LIVED.  
 THEY CAN INSPIRE GOODNESS, LIFT US FROM CAPTIVITY OF IMPERFECTIONS,  
 AND LEAD US UPWARD TO THE REDEMPITIVE PATH OF FORGIVENESS AND SANCTIFICATION.  
 -DIETER F. UCHTDORF**





# ADVANTAGE

## 10 YARDLEY ADVANTAGE L353

3/4 SM 1/4 AN	BD 3/3/2023	ASA 4242909	DATA	
CCR ANCHOR	CCR COWBOY CUT		<b>BW</b>	<b>94</b>
<b>LLSF VANTAGE POINT</b>	CCR MS BARB 2120Z		<b>WW</b>	<b>716</b>
HPF RITE 2 LUV 398D	LLSF UPRISING		<b>YW</b>	<b>1262</b>
	RIGHT TO LOVE 015U		<b>CE</b>	<b>9.8</b>
	SHOCKING DREAM		<b>BW</b>	<b>2.6</b>
YARDLEY ENSIGN	MISS YARDLEY W151		<b>WW</b>	<b>82.1</b>
<b>MISS YARDLEY B167</b>	DREAM ON		<b>YW</b>	<b>124.1</b>
MISS YARDLEY S7	MISS YARDLEY P35		<b>MK</b>	<b>19.6</b>
			<b>PAP</b>	<b>35</b>

H/P/S	WDA	TG	RIB FAT	REA	% IMF	DWR
<b>P</b>	<b>3.45</b>	<b>3.41</b>	<b>0.18</b>	<b>12.6</b>	<b>2.24</b>	<b>8@99</b>

Advantage is a handsome recruit in a high % package. He is loaded with rock solid performance; a 716# adj WW and a 1,262# adj YW!

-His big bodied, stellar, long lived maternal grandam and donor was one of our best producers with an unparalleled track record; averaging 750# on 12 calves for a weaning ratio of 112; a true test of longevity, profitability, and performance! - Past sons include Yardley Step Ahead, an \$11,000 leadoff, '17 sale day favorite selected by Mark Beitelspacher of Bowdle SD and an \$8,500 sale day favorite purchased by Derrell Shawcroft of La Jara CO.



Long bodied maternal brother to the dam of Advantage



Massive ribbed, productive, maternal grandam of Advantage



Step Ahead the massive maternal brother to the dam of Advantage





SFI Achievement, the striking sire of Objective.

## 11 YARDLEY OBJECTIVE L280

3/4 SM 1/4 AN		BD 2/5/2023		ASA 4242846		DATA	
PAYS TO BELIEVE <b>SFI ACHIEVEMENT</b> SFI MISS LACEY	PAYS TO DREAM URABABYDOLL U194 HOOKS SHEAR FORCE SFI MISS ALLEY Z12			<b>BW</b>	<b>78</b>		
				<b>WW</b>	<b>686</b>		
				<b>YW</b>	<b>1276</b>		
				<b>CE</b>	<b>13.9</b>		
YARDLEY TOP GUN <b>MISS YARDLEY J126</b> MISS YARDLEY F73	YARDLEY TOP NOTCH MISS YARDLEY Y134 MR HOC BROKER MISS YARDLEY Y87			<b>BW</b>	<b>0.4</b>		
				<b>WW</b>	<b>80.8</b>		
				<b>YW</b>	<b>127.4</b>		
				<b>MK</b>	<b>26.6</b>		
				<b>PAP</b>	<b>39</b>		
H/P/S	WDA	TG	RIB FAT	REA	% IMF	DWR	
P	3.22	3.69	0.28	15.99	3.29	1@103	

You'll love the style and design of this smooth shouldered, well-balanced bull. We seriously considered keeping him for a heifer bull. He combines all the parts and pieces is a sleek stylish package to be so much more than just "a heifer bull." Objective is an individual that you can use effectively on heifers to produce front pasture calves and turn around and use again on cows with amazing results.

## 12 YARDLEY ABSOLUTE L348

3/4 SM 1/4 AN		BD 3/1/2023	ASA 4242903	DATA		
KCC1 EXCLUSIVE	MR TR HAMMER		UPGRADE	BW	95	
			EXPECTING A DREAM	WW	695	
	TKCC VICTORIA 57A		ENTOURAGE	YW	1277	
			FORD RJ DOLLY Y83	CE	11.1	
	W/C BANCHOR		CCR ANCHOR	BW	1	
MISS YARDLEY F54			W/C MISS WERNING 46B	WW	77.2	
			GCF BILLY THE KID	YW	109.2	
	MISS YARDLEY D124		MISS YARDLEY U431	MK	14.6	
				PAP	37	
H/P/S	WDA	TG	RIB FAT	REA	% IMF	DWR
S	3.46	3.64	0.25	15.57	2.89	4@102

I first saw Absolute's sire, Exclusive, at the NWSS where he was the powerful lead bull in the Grand Champion Pen for Kearns Cattle Co. I was very impressed with him and tried striking a deal with Zach Kearns, but he informed me they were selling him in Fort Worth. I was on the phone and in on the bidding. When he sold for \$120,000 for half interest, I figured I could get the semen cheaper than owning the bull! Exclusive is flawless at the ground: big footed, stout boned, and flexible in his movement. He's extremely athletic with tremendous power, balance and eye-appeal! His maternal sister topped the 2017 "Event Sale" at \$30,000, and his famous grandam produced breed impacting sires, Classified and Carver.



Maternal brother to the dam of Absolute



Maternal sister to the dam of Absolute





**SUGAR DADDY**

Impressive maternal brother of Sugar Daddy

**13 YARDLEY SUGAR DADDY L103**

5/8 SM 3/8 AN	BD 2/26/2023	ASA 4242719	DATA			
CCR ANCHOR	CCR COWBOY CUT		<b>BW</b>	<b>80</b>		
<b>W/C BANCHOR</b>	CCR MS BARB 2120Z		<b>WW</b>	<b>735</b>		
W/C MISS WERNING 46B	REMINGTON LOCK N LOAD		<b>YW</b>	<b>1220</b>		
	MISS WERNING 715T		<b>CE</b>	<b>14.6</b>		
LOVER BOY	DURACELL		<b>BW</b>	<b>-1.9</b>		
<b>MISS YARDLEY E4</b>	RIGHT TO LOVE 015U		<b>WW</b>	<b>67</b>		
MISS YARDLEY C147	ROYAL JET		<b>YW</b>	<b>95.2</b>		
	MISS YARDLEY W84		<b>MK</b>	<b>22.3</b>		
			<b>PAP</b>	<b>32</b>		
H/P/S	WDA	TG	RIB FAT	REA	% IMF	DWR
<b>P</b>	<b>3.37</b>	<b>3.03</b>	<b>0.32</b>	<b>13.39</b>	<b>2.95</b>	<b>5@99</b>

Sugar Daddy is a belly dragging, scale mashing, ground shaking sire of epic proportions! The Banchor X Loverboy mating is nearly magical in its ability to consistently produce impressive quality calves with light birthweights and hefty weaning weights. He ranks in the top 30% for CE and the top 20% for BW. His dandy dam has done a tremendous job with two of her previous calves selling for \$8,000!

**14 YARDLEY MVP L329**

PB SM	BD 2/23/2023	ASA 4242886	DATA			
BETTER BELIEVE IT	PAYS TO BELIEVE		<b>BW</b>	<b>78</b>		
<b>LLSF DRAFT PICK</b>	LLSF CAYENNE UP401		<b>WW</b>	<b>675</b>		
KENCO STEEL MAGNOLIA	STEEL FORCE		<b>YW</b>	<b>1182</b>		
	SAFN SHES GLAMOROUS		<b>CE</b>	<b>12.9</b>		
W/C BANCHOR	CCR ANCHOR		<b>BW</b>	<b>-0.1</b>		
<b>MISS YARDLEY G608</b>	W/C MISS WERNING 46B		<b>WW</b>	<b>75.7</b>		
MISS YARDLEY T68	YARDLEY PINON		<b>YW</b>	<b>110.3</b>		
	MISS YARDLEY M211		<b>MK</b>	<b>25.1</b>		
			<b>PAP</b>	<b>48</b>		
H/P/S	WDA	TG	RIB FAT	REA	% IMF	DWR
<b>P</b>	<b>3.17</b>	<b>3.17</b>	<b>0.23</b>	<b>13.57</b>	<b>2.85</b>	<b>3@106</b>

MVP's pedigree combines two of the elite individuals in the Simmental breed: T68, his maternal donor grandam and the mother of Yardley High Regard and MVP's sire, Draft Pick, who was the lead off bull in Lee's Champion Pen of 5 Purebreds in OKC Cattlemens' Congress and the PB bull calf Champion in the National show. Let MVP be the most valuable player in your bull battery this spring!



LLSF Draft Pick, OKC Champion and sire of MVP

**MVP**



**POINT TAKEN**

LLSF Vantage Point, popular sire of Point Taken

**15 YARDLEY POINT TAKEN L352**

5/8 SM 3/8 AN BD 3/3/2023 ASA 4242908

CCR ANCHOR  
**LLSF VANTAGE POINT**  
 HPF RITE 2 LUV 398D

YARDLEY STANDOUT  
**MISS YARDLEY H141**  
 MISS YARDLEY F16

CCR COWBOY CUT  
 CCR MS BARB 2120Z  
 LLSF UPRISING  
 RIGHT TO LOVE 015U  
 LOVER BOY  
 MISS YARDLEY C136  
 SAV CATALYST  
 MISS YARDLEY D134

DATA	
BW	79
WW	707
YW	1240
CE	13.3
BW	1
WW	85.1
YW	133.5
MK	22.1
PAP	36

H/P/S	WDA	TG	RIB FAT	REA	% IMF	DWR
P	3.27	3.33	0.26	13.61	3.04	2@102

Check out the style, dimension, and depth coupled with the awesome performance of this beautiful bodied bull. Point Taken's sire, Vantage Point, was the 2019 leadoff bull in the champion pen of % Simmental bulls exhibited by Lee Cattle. He was then purchased by renowned cattlemen Steve Hicks of Hicks Cattle Co and Rick Wood of Woodlawn Farms. Point taken rates in the top 20% for WW, YW, REA, and DOC. He also ranks in the top 30% for ADG, YG, and BF. Simply stated if you sell by the pound or on the grid, Point Taken should be a serious candidate in your bull battery selection.

**16 YARDLEY MEDICINE MAN L404**

1/2 SM 1/2 AN BD 3/7/2023 ASA 4242953

TJ FROSTY  
**TJ CHIEF**  
 TJ 52A

OCC JET STREAM  
**MISS YARDLEY E24**  
 MISS YARDLEY C149

IRONHIDE  
 TJ 58B  
 TJ NEW TIME LINE  
 T J MISS DAY R1  
 OCC EMBLAZON  
 OCCJUANADA 968G  
 NORTHERN OCTANE  
 MISS YARDLEY K52

DATA	
BW	87
WW	786
YW	1339
CE	10.6
BW	1.1
WW	83.9
YW	124.3
MK	31.9
PAP	36

H/P/S	WDA	TG	RIB FAT	REA	% IMF	DWR
P	3.69	3.46	0.28	14.01	3.4	5@106

Medicine Man is a tremendous half-blood loaded with an abundance of rib shape and presence. His proven sire, TJ Chief has a beautiful phenotype and power that simply sires cattle with great market value. Chief's first calf crop included the \$70,000 Triangle J Ranch top seller, TJ War Paint. Long sided, deep ribbed, stout boned progeny that have extra TJ War Paint, 2022 Top Seller and Son of Chief presence and squareness are the norm for Chief calves. Medicine man is loaded with power and performance with a ground shaking 759# WW and a 1,308# YW. He ranks in the top 25% for WW, top 5% Milk, and top 10% MWW. If you want to make mouthwatering females or sale stopping steers that sell at a premium Medicine Man is your man!



TJ Chief, popular sire of Medicine Man



Proud headed maternal brother of Medicine Man

**MEDICINE MAN**



**DEPOSIT**

WC Banchor, masculine sire of Deposit

**17 YARDLEY DEPOSIT L427**

5/8 SM 3/8 AN BD 3/22/2023 ASA 4242973

		DATA
CCR ANCHOR	CCR COWBOY CUT	BW 80
<b>W/C BANCHOR</b>	CCR MS BARB 2120Z	WW 720
W/C MISS WERNING 46B	REMINGTON LOCK N LOAD	YW 1225
	MISS WERNING 715T	CE 13.5
YARDLEY GIB	GCC NICKELS N DIMES	BW -0.7
<b>MISS YARDLEY G52</b>	MISS YARDLEY X192	WW 73
MISS YARDLEY D184	SAV PATRON	YW 103.9
	MISS YARDLEY A220	MK 25.6
		PAP 49

H/P/S	WDA	TG	RIB FAT	REA	% IMF	DWR
P	3.33	3.16	0.19	12.21	3.03	3@104

You'll love the amount of substance and impressive muscle coupled with the softness, smooth joints and impressive performance; this young stud brings to the table. On the move he's even more impressive as he strides out in a wide based, easy flowing stroll. Deposit is as good as money in the bank for your operation. Both his dam and maternal grandam have averaged nearly 700# at weaning on their calves; boasting of performance and consistency.

**18 YARDLEY HOT TAMALE L307**

PB SM BD 2/26/2023 ASA 4242870

		DATA
COUNTY O	W/C LOADED UP	BW 104
<b>HOT CHILI PEPPER</b>	RUBY NFF RHYTHM 475B	WW 723
SFI SHES A BOMB D7	HIGH VOLTAGE	YW 1328
	SFI INFATUATION Y5	CE 9.2
SFI ACHIEVEMENT	PAYS TO BELIEVE	BW 3.8
<b>MISS YARDLEY H76</b>	SFI MISS LACEY	WW 88.2
MISS YARDLEY C95	KCC1 PINNACLE	YW 137.9
	MISS YARDLEY Y197	MK 20.5
		PAP 41

H/P/S	WDA	TG	RIB FAT	REA	% IMF	DWR
P	3.48	3.78	0.18	15.04	3.09	2@105

In forty years, we have not bred to a red bull, with the exception of two AI sires. So when it was time to purchase a red bull you can bet we were extremely selective. We finally found a bull that brought all the parts and pieces together both phenotypically and performance wise when we encountered Hot Pepper, the sire of Hot Tamale. Hot Tamale's dam has done an excellent job with a notable 710# average on two calves. Her maternal brothers sold for \$6,000 and \$7,000 respectively.



The stylish sire of Hot Tamale, Hot Chili Pepper

**HOT TAMALE**



**BLACK PEPPER**

Powerful maternal brother to the dam of Black Pepper



Stylish maternal brother to the dam of Black Pepper

**19 YARDLEYBLACK PEPPER L351**

1/2 SM 1/2 AN		BD 3/3/2023		ASA 4242907		DATA	
COUNTY O		W/C LOADED UP				BW	92
HOT CHILI PEPPER		RUBY NFF RHYTHM 475B				WW	746
SFI SHES A BOMB D7		HIGH VOLTAGE				YW	1179
		SFI INFATUATION Y5				CE	8.1
SAV INTERNATIONAL		SAV HARVESTOR				BW	2.5
		SAV EMBLYNETTE 5483				WW	81.5
MISS YARDLEY D32		OCC PROTOTYPE				YW	116.9
MISS YARDLEY W615		OCC JUANADA 741K				MK	22.1
						PAP	NA
H/P/S	WDA	TG	RIB FAT	REA	% IMF	DWR	
P	3.29	2.7	0.17	13.61	2.36	7@100	

Black Pepper is a soft and stylish bull with depth and width throughout that will transmit genes to produce the cattlemen's kind of offspring; cattle that will heartily handle the winter weather and tough ranges with real-world fleshing ability and productivity to yield profitable calves. His dam was a beautifully made, moderate Ohlde bred Angus. Her dam in turn was a maternal sister to GCC Total Recall, out of the great 741K cow. She had a tight udder and perfect conformation that we fell in love with. She produced a \$6,000 standout in '16 and a \$9,000 sale day favorite in '14. *Black Pepper has a little attitude.*

**20 YARDLEY ANAHEIM L359**

1/2 SM 1/2 AN		BD 3/5/2023		ASA 4242913		DATA	
COUNTY O		W/C LOADED UP		BW		90	
HOT CHILI PEPPER		RUBY NFF RHYTHM 475B		WW		692	
SFI SHES A BOMB D7		HIGH VOLTAGE		YW		1199	
		SFI INFATUATION Y5		CE		8.7	
KOUPALS B&B TITAN		KOUPALS B&B EXTRA		BW		2.2	
MISS YARDLEY D176		B&B BLACKCAP 0068		WW		83	
DIXIE ERICA 1153		DUFF STIMULUS		YW		123.7	
		DCC DIXIE ERICA 001		MK		19.1	
				PAP		36	
H/P/S	WDA	TG	RIB FAT	REA	% IMF	DWR	
P	3.29	3.17	0.18	14.76	3.25	7@102	

Anaheim dominates the ground he walks on and has the look of a true masculine breed piece. We have been super pleased with our SimAngus out of Hot Pepper. He consistently sires mouthwatering females and eye-catching bulls. With an impressive 674# adj WW and a hefty 1,174# adj YW L359's calves are sure to impress and excel in terms of phenotype and performance. His young dam has an impressive 6@102 weaning ratio including Yardley Guardian, a \$6,000 favorite selected by our good friend and neighbor Rodney Carter of Minersville UT.



Deep bodied maternal brother to Anaheim

**ANAHEIM**



**EXPEDITE**

Smooth made maternal brother to Expedite



Topline, \$15,000 full brother to the dam of Expedite

**21 YARDLEY EXPEDITE L373****PB SM****BD 3/7/2023****ASA 4242924**

DATA	
<b>BW</b>	<b>89</b>
<b>WW</b>	<b>735</b>
<b>YW</b>	<b>1260</b>
<b>CE</b>	<b>10.2</b>
<b>BW</b>	<b>1.5</b>
<b>WW</b>	<b>80</b>
<b>YW</b>	<b>122.2</b>
<b>MK</b>	<b>25</b>
<b>PAP</b>	<b>37</b>

SFI ACHIEVEMENT  
**YARDLEY ACCELERATE**  
 MISS YARDLEY E88  
 YARDLEY TOP NOTCH  
**MISS YARDLEY G209**  
 MISSISSIPPI BELLE

PAYS TO BELIEVE  
 SFI MISS LACEY  
 YARDLEY HIGH REGARD  
 MISS YARDLEY B15  
 SANDEEN UPPER CLASS  
 HSF VICTORIA P30  
 K-LER MAKE IT RAIN  
 MISSISSIPPI BELLE

H/P/S	WDA	TG	RIB FAT	REA	% IMF	DWR
<b>S</b>	<b>3.4</b>	<b>3.28</b>	<b>0.23</b>	<b>11.92</b>	<b>2.97</b>	<b>3@107</b>

Wise cattlemen know the benefits and reap the rewards of the consistent quality that comes from proven cow families. Yardley Expedite comes with an added dose of maternal cow power. His beautifully uddered dam has averaged a massive 738# average including an \$11,500 sale feature in last year's sale. His profitable maternal grandam has averaged 700# on eight calves including Yardley Topline, our '17 \$15,000 high seller chosen by the up-and-coming entrepreneurs of Oregon, the Allen Brothers.

**22 YARDLEY GRAND DESIGN L405****5/8 SM 3/8 AN****BD 3/7/2023****ASA 4242954**

DATA	
<b>BW</b>	<b>86</b>
<b>WW</b>	<b>678</b>
<b>YW</b>	<b>1172</b>
<b>CE</b>	<b>11.8</b>
<b>BW</b>	<b>-0.2</b>
<b>WW</b>	<b>63.5</b>
<b>YW</b>	<b>95.1</b>
<b>MK</b>	<b>20.4</b>
<b>PAP</b>	<b>42</b>

YARDLEY STANDOUT  
**YARDLEY GRANDSTAND**  
 MISS YARDLEY F132

YARDLEY ENSIGN  
**MISS YARDLEY C150**  
 MISS YARDLEY Z67

LOVER BOY  
 MISS YARDLEY C136  
 YARDLEY TOP NOTCH  
 MISS YARDLEY C183  
 SHOCKING DREAM  
 MISS YARDLEY W151  
 YARDLEY DOC SKIPPER  
 MISS YARDLEY U203

H/P/S	WDA	TG	RIB FAT	REA	% IMF	DWR
<b>P</b>	<b>3.22</b>	<b>3.09</b>	<b>0.22</b>	<b>13.97</b>	<b>2.64</b>	<b>7@100</b>

Grand Design has the build and functionality that make SimAngus hybrids so versatile and profitable in the pasture, at the feedlot and on the rail. He combines the best of both breeds; abundant depth of body with impressive rib shape and dimension coupled with a massive butt end and top line to produce moderate made stout females and impressive scale mashing steers. His dam is a maternal sister to our old herd sire Yardley Profit.



Long bodied maternal grandam of Grand Design



Profit D283, striking maternal brother to the dam of Grand Design

**GRAND DESIGN**



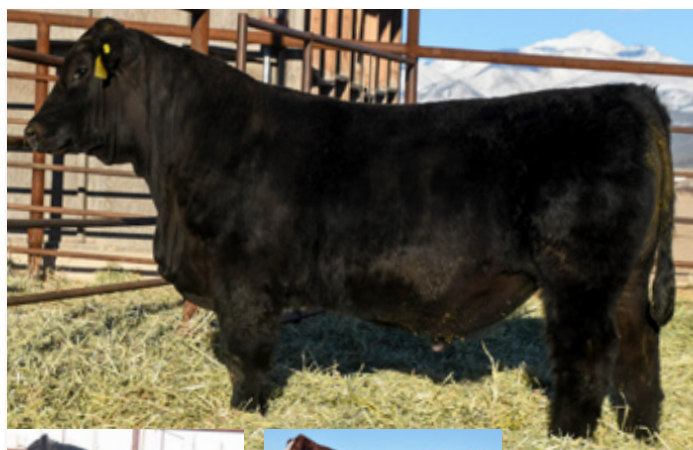


## 23 YARDLEY LAD L336

PB SM		BD 2/25/2023	ASA 4242892	DATA		
UP THE ANTE	RUBY'S CURRENCY		WBF SIGNIFICANT	BW	80	
			RUBYS JILL 035X	WW	631	
	RUBY NFF RHYTHM 2124Z		MONTECITO	YW	1136	
			RHYTHM 418P	CE	14.9	
				BW	-0.7	
MISS YARDLEY G242	GCC NICKELS N DIMES		STEEL FORCE	WW	59.7	
			ANT JOYS ELEGANCE	YW	89.9	
	MISS YARDLEY X15		OCC JUST RIGHT	MK	23.5	
			MISS YARDLEY U3	PAP	33	
H/P/S	WDA	TG	RIB FAT	REA	% IMF	DWR
P	3.03	3.16	0.3	12.92	2.95	3@99

You can't help but be impressed by the amount of power and substance this long spined, massive hipped individual possesses. He combines great athleticism and flex with added width and increased dimension, on a sturdy, properly built frame.

-His sire, Ruby NFF Up The Ante 9171G is a Simmental bull that without a doubt is one of the most intriguing bulls to emerge in 2020! Ruby NFF Up the Ante 9171G was the selection of Shoal Creek Land and Cattle and Purdue University out of the Ruby Cattle Company bull sale.



## 24 YARDLEY LAD L318

PB SM		BD 2/16/2023	ASA 4242876	DATA		
HOT CHILI PEPPER	COUNTY O		W/C LOADED UP	BW	85	
			RUBY NFF RHYTHM 475B	WW	723	
	SFI SHES A BOMB D7		HIGH VOLTAGE	YW	1250	
			SFI INFATUATION Y5	CE	10.8	
			DURACELL	BW	1.9	
MISS YARDLEY H18	LOVER BOY		RIGHT TO LOVE 015U	WW	85.5	
			YARDLEY TOP NOTCH	YW	124.3	
	MISS YARDLEY F118		MISS YARDLEY X126	MK	23	
				PAP	34	
H/P/S	WDA	TG	RIB FAT	REA	% IMF	DWR
P	3.29	3.29	0.3	13.07	2.5	2@105

L318's maternal line traces back to X126, our prettiest red cow and the only red cow we have ever flushed, giving you an idea of what we think of her. She is a beautiful herd matron, that always stayed fat and weaned a big calf, averaging a whopping 712# average with a 8@108 nursing ratio on eight head, including \$14,000 Yardley Excellence, selected by Bill Carsten of Hotchkiss CO and our leadoff lot one bull in '18, \$9,500 Clear Cut, purchased by our good friends the Kunzlers of Park Valley, UT. Her daughters are beautiful made matrons.



Smooth-made maternal brother of L318



X126, maternal great grandam of L318



## 25 YARDLEY LAD L397

1/2 SM 1/2 AN		BD 3/11/2023		ASA 4242945		DATA	
SANDEEN UPPER CLASS		UPGRADE		BW		98	
YARDLEY TOP NOTCH		SANDEEN DONNA 7386		WW		699	
HSF VICTORIA P30		NICHOLS BLK DESTINY		YW		1257	
		BTS 91X BIG SKY F632		CE		12.6	
LCC NEW STANDARD		BON VIEW NEW DESIGN		BW		0.3	
MISS YARDLEY S19		LCC SUNSET K3118		WW		66.8	
MISS YARDLEY P197		R A F XPLORER K 760		YW		107.8	
		MISS YARDLEY J66		MK		21.7	
				PAP		36	
H/P/S	WDA	TG	RIB FAT	REA	% IMF	DWR	
P	3.37	3.49	0.19	14.97	2.92	44@103	

The first cow my dad let me pick out as my own from our herd was a beautiful Maine Anjou, P128. She was a front pasture female with extreme depth of body and a massive hip coupled with a feminine front end so sought after and hard to find. L397 traces back to this elite cornerstone herd matron.



Top Notch, the muscular sire of L397



The feminine fronted maternal grandam of L397





Achievement, the handsome sire of L415

## 26 YARDLEY LAD L415

3/4 SM 1/4 AN

BD 3/17/2023

ASA 4242963

### SFI ACHIEVEMENT

SFI MISS LACEY

YARDLEY WAH WAH

### MISS YARDLEY E206

MISS YARDLEY R20

PAYS TO DREAM

URABABYDOLL U194

HOOKS SHEAR FORCE

SFI MISS ALLEY Z12

GCF BILLY THE KID

MISS YARDLEY U154

PINE CREEK RIGHTTIME

MISS YARDLEY N187

DATA	
BW	85
WW	708
YW	1163
CE	13.8
BW	-0.5
WW	72.2
YW	107.1
MK	20
PAP	39

H/P/S	WDA	TG	RIB FAT	REA	% IMF	DWR
S	3.23	2.85	0.29	13.39	3.3	5@102

This massive ribbed, easy keeping stud comes loaded with power and growth. His maternal grandam testifies of the longevity and productivity flowing through his veins with a weaning ratio of 11@105.

## 27 YARDLEY LAD L452

3/4 SM 1/4 AN

BD 3/25/2023

ASA 4242994

### LOVER BOY

RIGHT TO LOVE 015U

W/C BANCHOR

### MISS YARDLEY H26

MISS YARDLEY F116

DREAM ON

HTP SVF HONEYDEW

BUILT RIGHT

QUEENS VALENTINE R9

CCR ANCHOR

W/C MISS WERNING 46B

YARDLEY NORTH FORCE

MISS YARDLEY Y65

DATA	
BW	83
WW	787
YW	1239
CE	12.1
BW	1
WW	85.2
YW	119.2
MK	28.8
PAP	47

H/P/S	WDA	TG	RIB FAT	REA	% IMF	DWR
S	3.34	2.83	0.22	13.39	2.39	2@109

L452 is a bold ribbed, big topped dude! His maternal brother was a \$5,500 feature selected by Jeremy Faucette of Sanford Colorado in last year's sale.



Loverboy, renowned sire of L452

Long bodied maternal brother of L452

## 28 YARDLEY LAD L312

3/4 SM 1/4 AN

BD 2/17/2023

ASA 4242873

### GCC SHOCKER

CONLEY SHEZA STAR W32

YARDLEY NORTH FORCE

### MISS YARDLEY F166

MISS YARDLEY Y147

UPGRADE

EXPECTING A DREAM

B C LOOKOUT

SVF SHEZA STAR S803

NORTHERN OCTANE

GCC STEEL FORCE 199X

DURACELL

MISS YARDLEY U187

DATA	
BW	95
WW	697
YW	1274
CE	9.4
BW	2.9
WW	84.7
YW	130.6
MK	21.4
PAP	45

H/P/S	WDA	TG	RIB FAT	REA	% IMF	DWR
P	3.44	3.61	0.22	14.19	2.91	4@104

L312 is perhaps the gentlest bull in the offering. Talon broke him to ride in the picture pen, but that's a story for another day! His profitable dam has averaged 717# on three calves including a \$5,500 sale feature selected by our good friend Lynn Bastian of Idaho and a \$7,000 feature in our '22 sale selected by Navarro Cattle of Montrose CO.



The deep sided maternal brother to L312

Strong topped maternal brother to L312





# LOCATION

## 29 YARDLEY LOCATION L390

PB SM		BD 3/9/2023	ASA 4242939	DATA		
LOVER BOY	DURACELL		DREAM ON	BW	82	
			HTP SVF HONEYDEW	WW	645	
	RIGHT TO LOVE 015U		BUILT RIGHT	YW	1082	
			QUEENS VALENTINE R9	CE	11	
	YARDLEY TOP NOTCH		SANDEEN UPPER CLASS	BW	-0.2	
MISS YARDLEY H151			HSF VICTORIA P30	WW	67.1	
			YARDLEY HIGH REGARD	YW	92.6	
	MISS YARDLEY Z110		MISS YARDLEY G41	MK	26.2	
				PAP	36	
H/P/S	WDA	TG	RIB FAT	REA	% IMF	DWR
P	2.87	2.73	0.12	13.16	2.77	2@102

Yardley Location is more than just a place he's a destination, and he's a red bull with the look to put in any front pasture. Regardless of where he goes, he's sure to be a piece of real estate worth having on the home ranch. Check out his stylish design, fancy front, and powerful hip! If you are looking for a good red your search is over. His maternal brother, Old Time Rock, was our \$14,000 high selling red head in last year's sale to Steve Smith of Lehi Utah. A maternal brother to his dam was the '15, \$20,000 high seller selected by Greg Shawcroft of LaJara CO.

***The tumult and the shouting dies;  
The Captains and the Kings depart:  
Still stands Thine ancient sacrifice,  
An humble and a contrite heart.  
Lord God of Hosts, be with us yet,  
Lest we forget—lest we forget!  
- Rudyard Kipling***



Old Time Rock, \$14,000 3/4 brother of Yardley Location



\$20,000 maternal brother of L390's dam





The powerhouse sire of L403



Massive maternal brother to L347



Confident maternal brother to L396's dam



The ideally designed sire of L360

**30 YARDLEY LAD L403**

PB SM

BD 3/13/2023

ASA 4242952

DATA

SFI ACHIEVEMENT	PAYS TO BELIEVE
<b>YARDLEY ACCELERATE</b>	SFI MISS LACEY
MISS YARDLEY E88	YARDLEY HIGH REGARD
YARDLEY HIGH REGARD	MISS YARDLEY B15
<b>MISS YARDLEY D81</b>	YARDLEY IMPRESSIVE
MISS YARDLEY Y147	MISS YARDLEY T68
	DURACELL
	MISS YARDLEY U187

<b>BW</b>	<b>76</b>
<b>WW</b>	<b>773</b>
<b>YW</b>	<b>1232</b>
<b>CE</b>	<b>11.9</b>
<b>BW</b>	<b>-0.7</b>
<b>WW</b>	<b>76.5</b>
<b>YW</b>	<b>116.1</b>
<b>MK</b>	<b>26.6</b>
<b>PAP</b>	<b>38</b>

H/P/S	WDA	TG	RIB FAT	REA	% IMF	DWR
<b>S</b>	<b>3.44</b>	<b>2.87</b>	<b>0.12</b>	<b>12.54</b>	<b>2.55</b>	<b>5@107</b>

L403 hails from a tremendous cow family with a proven track record of power, performance, and profitability. His heavy milking dam records a 5@107 weaning ratio. His maternal grandam is a beautiful daughter of the deceased Duracell, the sire of Loverboy and Quantum Leap. She records an impressive 10@100 weaning ratio.

**31 YARDLEY LAD L347**

1/2 SM 1/2 AN

BD 2/28/2023

ASA 4242902

DATA

SFI ACHIEVEMENT	PAYS TO BELIEVE
<b>YARDLEY ACCELERATE</b>	SFI MISS LACEY
MISS YARDLEY E88	YARDLEY HIGH REGARD
SAV 654X RAINMAKER 7133	MISS YARDLEY B15
<b>MISS YARDLEY G214</b>	COLEMAN CHARLO
MISS YARDLEY E81	SAV BLACKCAP MAY 5853
	YARDLEY LAD A440
	MISS YARDLEY W44

<b>BW</b>	<b>98</b>
<b>WW</b>	<b>732</b>
<b>YW</b>	<b>1226</b>
<b>CE</b>	<b>8.6</b>
<b>BW</b>	<b>2.7</b>
<b>WW</b>	<b>83.3</b>
<b>YW</b>	<b>128.4</b>
<b>MK</b>	<b>25.7</b>
<b>PAP</b>	<b>36</b>

H/P/S	WDA	TG	RIB FAT	REA	% IMF	DWR
<b>S</b>	<b>3.32</b>	<b>3.09</b>	<b>0.25</b>	<b>13.74</b>	<b>2.86</b>	<b>3@107</b>

With a 732# WW, L347 is a powerfully hipped, long bodied rascal that has the potential to bring pounds of profit to a calf crop year in and year out. His dam records a hefty 3@107 averaging 713# WWs including a handsome \$6,750 son purchased by our good friend Mike Larson of Ephraim UT!

**32 YARDLEY LAD L396**

3/4 SM 1/4 AN

BD 3/11/2023

ASA 4242944

DATA

SFG THE JUDGE	CCR COWBOY CUT
<b>YARDLEY LAWMAN</b>	SFG QUEEN B01
MISS YARDLEY E10	SAV PATRON
YARDLEY NORTH FORCE	MISS YARDLEY C51
<b>MISS YARDLEY G246</b>	NORTHERN OCTANE
MISS YARDLEY D173	GCC STEEL FORCE 199X
	YARDLEY ENSIGN
	MISS YARDLEY A152

<b>BW</b>	<b>101</b>
<b>WW</b>	<b>704</b>
<b>YW</b>	<b>1160</b>
<b>CE</b>	<b>6</b>
<b>BW</b>	<b>4.3</b>
<b>WW</b>	<b>74.1</b>
<b>YW</b>	<b>106.6</b>
<b>MK</b>	<b>23.9</b>
<b>PAP</b>	<b>36</b>

H/P/S	WDA	TG	RIB FAT	REA	% IMF	DWR
<b>P</b>	<b>3.16</b>	<b>2.85</b>	<b>0.2</b>	<b>12.53</b>	<b>2.59</b>	<b>3@108</b>

We simply ran out of time on the clipping crew and in the picture pen to get everything we wanted to pictured; L396 certainly would have taken a nice one. His incredible dam records a 3@108 weaning ratio and a 718# WW average including a striking son selected by the Snow Brothers of Jensen UT in '22.

**33 YARDLEY LAD L360**

PB SM

BD 3/3/2023

ASA 4242915

DATA

COUNTY O	W/C LOADED UP
<b>HOT CHILI PEPPER</b>	RUBY NFF RHYTHM 475B
SFI SHES A BOMB D7	HIGH VOLTAGE
LOVER BOY	SFI INFATUATION Y5
<b>MISS YARDLEY G15</b>	DURACELL
MISS YARDLEY E161	RIGHT TO LOVE 015U
	ZEIS REAL STEEL
	MISS YARDLEY S33

<b>BW</b>	<b>90</b>
<b>WW</b>	<b>668</b>
<b>YW</b>	<b>1256</b>
<b>CE</b>	<b>11</b>
<b>BW</b>	<b>1.4</b>
<b>WW</b>	<b>79.3</b>
<b>YW</b>	<b>112.3</b>
<b>MK</b>	<b>20</b>
<b>PAP</b>	<b>43</b>

H/P/S	WDA	TG	RIB FAT	REA	% IMF	DWR
<b>P</b>	<b>3.33</b>	<b>3.68</b>	<b>0.18</b>	<b>14.07</b>	<b>2.81</b>	<b>4@102</b>

EXCELLENT CARCASS DATA TWIN.





Stylish sire of L358

**34 YARDLEY LAD L358****3/4 SM 1/4 AN BD 3/2/2023 ASA 4242912**

PAYS TO BELIEVE	PAYS TO DREAM
<b>SFI ACHIEVEMENT</b>	URABABYDOLL U194
SFI MISS LACEY	HOOKS SHEAR FORCE
	SFI MISS ALLEY Z12
LOVER BOY	DURACELL
<b>MISS YARDLEY H52</b>	RIGHT TO LOVE 015U
MISS YARDLEY F125	W/C LOCK N LOAD
	MISS YARDLEY X90

DATA	
BW	90
WW	719
YW	1356
CE	14.5
BW	-0.2
WW	83
YW	138.1
MK	28.5
PAP	41

H/P/S	WDA	TG	RIB FAT	REA	% IMF	DWR
P	3.55	3.98	0.21	12.29	3.81	2@109

Pounds are profit in the commercial cattle industry. L358 has one of the heftiest performance records of this year's crop with a 719# WW and a 1356# YW. He ranks in the top 25% of the breed for WW, top 15% for YW, top 10% for ADG, CW, REA, and top 20% for MCE, Milk, and MWW. His profitable young dam records 2@109 averaging 759# WWs.

**35 YARDLEY LAD L294****5/8 SM 9/32 AN 3/32 MA BD 2/16/2023 ASA 4242860**

CCR ANCHOR	CCR COWBOY CUT
<b>W/C BANCHOR</b>	CCR MS BARB 2120Z
W/C MISS WERNING 46B	REMINGTON LOCK N LOAD
	MISS WERNING 715T
YARDLEY TOP NOTCH	SANDEEN UPPER CLASS
<b>MISS YARDLEY J72</b>	HSF VICTORIA P30
MISS YARDLEY E176	YARDLEY NORTH FORCE
	MISS YARDLEY B26

DATA	
BW	78
WW	672
YW	1164
CE	12.1
BW	0.6
WW	73.1
YW	103.3
MK	23.9
PAP	NA

H/P/S	WDA	TG	RIB FAT	REA	% IMF	DWR
P	2.99	3.07	0.18	13.23	2.97	1@102



The confident sire of L294

**36 YARDLEY LAD L350****5/8 SM 3/8 AN BD 3/6/2023 ASA 4242906**

EGL FIRESTEEL	G A R SURE FIRE
<b>LCDR AFFIRMED</b>	TJ 22X
WS MISS SUGAR C4	CLRS GRADE-A
	WS ANISE A71
WS STEPPING STONE	W/C LOCK DOWN
<b>MISS YARDLEY E220</b>	WS MS UPGRADE Z15
MISS YARDLEY B130	YARDLEY BLACK MUSTANG
	MISS YARDLEY X138

DATA	
BW	80
WW	692
YW	1223
CE	15.8
BW	-1.4
WW	79.6
YW	119.3
MK	26.9
PAP	40

H/P/S	WDA	TG	RIB FAT	REA	% IMF	DWR
P	3.35	3.32	0.22	14.83	3.37	6@103

L350's productive and profitable dam produced Yardley Standard, the \$16,000 Standout son that topped our '20 sale selected by Jacobsen Ranch of SD.

**37 YARDLEY LAD L341****PB SM BD 2/25/2023 ASA 4242897**

BETTER BELIEVE IT	PAYS TO BELIEVE
<b>LLSF DRAFT PICK</b>	LLSF CAYENNE UP401
KENCO STEEL MAGNOLIA	STEEL FORCE
	SAFN SHES GLAMOROUS
STCC LONG HAUL	SHOCKING DREAM
<b>MISS YARDLEY A50</b>	MISS FANCY YARDLEY T85
MISS YARDLEY U114	YARDLEY TREASURE
	MISS YARDLEY F44

DATA	
BW	82
WW	653
YW	1178
CE	10.7
BW	1.1
WW	73.9
YW	108.3
MK	19
PAP	39

H/P/S	WDA	TG	RIB FAT	REA	% IMF	DWR
P	3.2	3.28	0.16	13.44	2.58	9@98

L341's sire, LLSF Draft Pick, was Jerry Lee's lead off bull in his Champion Pen of 5 Purebreds in OKC Cattlemen's Congress in 2021 and followed that up with Reserve National PB bull calf Champion in the National show. Draft Pick blends as good in his forerib to shoulder junction as any I have seen. We love his foot size, bone, power, shape, and length of skeleton. He is as square through his hip and level through his tail head as you can make one. He had a 17.2 REA and a 3.16 IMF score.



The \$16,000 maternal brother to L350



Impressive sire to L341





The renowned sire of L274. THSF Lover Boy



Recognized sire of L337



The impressive sire of L374



\$7,000 maternal brother to L279's dam

**38 YARDLEY LAD L274****5/8 SM 11/32 AN BD 2/3/2023 ASA 4242840**

		DATA
DURACELL	DREAM ON	<b>BW 87</b>
<b>LOVER BOY</b>	HTP SVF HONEYDEW	<b>WW 677</b>
RIGHT TO LOVE 015U	BUILT RIGHT	<b>YW 1215</b>
	QUEENS VALENTINE R9	<b>CE 11.8</b>
YARDLEY CHUNK	COLEMAN CHARLO	<b>BW 1.1</b>
<b>MISS YARDLEY J152</b>	MISS YARDLEY E49	<b>WW 83.5</b>
MISS YARDLEY G124	GCC NICKELS N DIMES	<b>YW 125.3</b>
	MISS YARDLEY Y72	<b>MK 31.2</b>
		<b>PAP 39</b>

H/P/S	WDA	TG	RIB FAT	REA	% IMF	DWR
P	3.08	3.36	0.19	14.49	2.57	1@106

Another great Loverboy Son!

**39 YARDLEY LAD L337****5/8 SM 3/8 AN BD 2/25/2023 ASA 4242893**

		DATA
TJ FROSTY	IRONHIDE	<b>BW 81</b>
<b>TJ CHIEF</b>	TJ 58B	<b>WW 707</b>
TJ 52A	TJ NEW TIME LINE	<b>YW 1234</b>
	T J MISS DAY R1	<b>CE 10.7</b>
Y1 WHIRL OF A DREAM	DREAM ON	<b>BW 0.3</b>
<b>MISS YARDLEY C71</b>	MISS YARDLEY B75	<b>WW 78.9</b>
MISS YARDLEY R14	OCC JET STREAM	<b>YW 115.9</b>
	MISS YARDLEY N145	<b>MK 26.7</b>
		<b>PAP 41</b>

H/P/S	WDA	TG	RIB FAT	REA	% IMF	DWR
P	3.38	3.29	0.29	12.95	3.41	5@105

L337's sire, TJ Chief, is a proven sire of beautiful phenotype and power that sires cattle with great market value. Chief's first calf crop included the \$70,000 Triangle J Ranch top seller, TJ War Paint.

L337's dam records a noteworthy 5@105 weaning ratio and had an \$8,500 maternal brother that was selected by Lavon Giles. His long-lived maternal grandam has averaged 709# on nine calves.

**40 YARDLEY LAD L374****PB SM BD 3/7/2023 ASA 4242925**

		DATA
MR SR 71 RIGHT NOW	HOOK'S BOZEMAN	<b>BW 88</b>
<b>MR SR MIC DROP</b>	MISS SR C1538	<b>WW 714</b>
MISS SR C1534	JBS BIG CASINO	<b>YW 1229</b>
	MISS SR Z1214	<b>CE 13</b>
SFI ACHIEVEMENT	PAYS TO BELIEVE	<b>BW 0.5</b>
<b>MISS YARDLEY H75</b>	SFI MISS LACEY	<b>WW 78.4</b>
MISS YARDLEY E241	YARDLEY NORTH FORCE	<b>YW 125.5</b>
	MISS YARDLEY B215	<b>MK 24.3</b>
		<b>PAP 44</b>

H/P/S	WDA	TG	RIB FAT	REA	% IMF	DWR
P	3.25	3.22	0.25	10.83	3.93	2@104

MIC DROP was one of Schnabel Ranch Simmentals high sellers of the 2020 sale going to Flittie Simmental. He is a purebred outcross calving ease bull sired by MR SR RIGHT NOW and has a tremendous cow family behind him for many generations.

**41 YARDLEY LAD L279****3/4 SM 1/4 AN BD 2/5/2023 ASA 4242845**

		DATA
DURACELL	DREAM ON	<b>BW 78</b>
<b>LOVER BOY</b>	HTP SVF HONEYDEW	<b>WW 665</b>
RIGHT TO LOVE 015U	BUILT RIGHT	<b>YW 1203</b>
	QUEENS VALENTINE R9	<b>CE 11.8</b>
YARDLEY LAD A440	STCC LONG HAUL	<b>BW 0.4</b>
<b>MISS YARDLEY J99</b>	MISS YARDLEY W105	<b>WW 79.2</b>
MISS YARDLEY C242	BUSHWACKER O'REILLY	<b>YW 116.7</b>
	MISS YARDLEY A130	<b>MK 27.7</b>
		<b>PAP 41</b>

H/P/S	WDA	TG	RIB FAT	REA	% IMF	DWR
P	3.05	3.36	0.22	12.42	2.35	1@102

L279's dam did a terrific job as a first calf heifer with L279, her first calf. Her maternal brother was a lead off \$7,000 bull of our '21 sale selected by our great friends the Snow Brothers of Jensen UT.





Impressive sire of L460 and L429



Yardley Lead F416, maternal brother of the grandam of L429



Exciting sire of L454



Fancy maternal brother of L456

**42 YARDLEY LAD L460**

5/8 SM 11/32 AN 1/32 MA BD 4/5/2023 ASA 4243003

SFI ACHIEVEMENT	PAYS TO BELIEVE
<b>YARDLEY ACCELERATE</b>	SFI MISS LACEY
MISS YARDLEY E88	YARDLEY HIGH REGARD
	MISS YARDLEY B15
YARDLEY STANDOUT	LOVER BOY
<b>MISS YARDLEY G45</b>	MISS YARDLEY C136
MISS YARDLEY E196	YARDLEY ENSIGN
	MISS YARDLEY X156

DATA	
<b>BW</b>	<b>79</b>
<b>WW</b>	<b>766</b>
<b>YW</b>	<b>1286</b>
<b>CE</b>	<b>11.2</b>
<b>BW</b>	<b>-0.4</b>
<b>WW</b>	<b>77.2</b>
<b>YW</b>	<b>121.7</b>
<b>MK</b>	<b>24.1</b>
<b>PAP</b>	<b>32</b>

H/P/S	WDA	TG	RIB FAT	REA	% IMF	DWR
<b>S</b>	<b>3.51</b>	<b>3.25</b>	<b>0.2</b>	<b>13.82</b>	<b>3.67</b>	<b>3@106</b>

L460's sire, Accelerate, was our pick of Achievement's first calf crop.

**43 YARDLEY LAD L429**

5/8 SM 1/4 AN 1/8 AR BD 3/22/2023 ASA 4242975

SFI ACHIEVEMENT	PAYS TO BELIEVE
<b>YARDLEY ACCELERATE</b>	SFI MISS LACEY
MISS YARDLEY E88	YARDLEY HIGH REGARD
	MISS YARDLEY B15
YARDLEY HIGH ROLLER	YARDLEY HIGH REGARD
<b>MISS YARDLEY G81</b>	MISS YARDLEY T164
MISS YARDLEY C1	DETOUR 2W
	GCC DIXIE ERICA 351Z

DATA	
<b>BW</b>	<b>76</b>
<b>WW</b>	<b>741</b>
<b>YW</b>	<b>1252</b>
<b>CE</b>	<b>12.5</b>
<b>BW</b>	<b>-0.7</b>
<b>WW</b>	<b>70.9</b>
<b>YW</b>	<b>112.9</b>
<b>MK</b>	<b>26.3</b>
<b>PAP</b>	<b>40</b>

H/P/S	WDA	TG	RIB FAT	REA	% IMF	DWR
<b>P</b>	<b>3.41</b>	<b>3.2</b>	<b>0.29</b>	<b>13.7</b>	<b>3.58</b>	<b>3@105</b>

**44 YARDLEY LAD L454**

5/8 SM 3/8 AN BD 3/28/2023 ASA 4242996

EGL FIRESTEEL	G A R SURE FIRE
<b>LCDR AFFIRMED</b>	TJ 22X
WS MISS SUGAR C4	CLRS GRADE-A
	WS ANISE A71
YARDLEY STANDOUT	LOVER BOY
<b>MISS YARDLEY G26</b>	MISS YARDLEY C136
MISS YARDLEY E150	YARDLEY ROYAL JET
	MISS YARDLEY A64

DATA	
<b>BW</b>	<b>88</b>
<b>WW</b>	<b>775</b>
<b>YW</b>	<b>1191</b>
<b>CE</b>	<b>12.3</b>
<b>BW</b>	<b>1.1</b>
<b>WW</b>	<b>83.9</b>
<b>YW</b>	<b>120.2</b>
<b>MK</b>	<b>24.7</b>
<b>PAP</b>	<b>39</b>

H/P/S	WDA	TG	RIB FAT	REA	% IMF	DWR
<b>P</b>	<b>3.28</b>	<b>2.6</b>	<b>0.27</b>	<b>12.53</b>	<b>3.65</b>	<b>2@106</b>

L454's sire, Affirmed is a popular AI sire that ranks in the top 3% of the breed for API and the top 1% for TI. You can't make one any longer in a 6 framed package. Affirmed is the Firesteel son that offers that extra performance and grow! Impressive CE to YW to Marb indexes in the 2% of the breed. This bull ranks in the top 25% of the breed for WW, MWW, Marbling, and TI. If you sell by the pound or on the rail L454 is a bull worth looking into.

**45 YARDLEY LAD L456**

5/8 SM 1/4 AN BD 3/31/2023 ASA 4242998

YARDLEY STANDOUT	LOVER BOY
<b>YARDLEY GRANDSTAND</b>	MISS YARDLEY C136
MISS YARDLEY F132	YARDLEY TOP NOTCH
	MISS YARDLEY C183
WS STEPPING STONE	W/C LOCK DOWN
<b>MISS YARDLEY G127</b>	WS MS UPGRADE Z15
MISS YARDLEY Y153	OCC JETFECK
	MISS YARDLEY P148

DATA	
<b>BW</b>	<b>90</b>
<b>WW</b>	<b>747</b>
<b>YW</b>	<b>1267</b>
<b>CE</b>	<b>12.4</b>
<b>BW</b>	<b>0.6</b>
<b>WW</b>	<b>75</b>
<b>YW</b>	<b>113.8</b>
<b>MK</b>	<b>24</b>
<b>PAP</b>	<b>41</b>

H/P/S	WDA	TG	RIB FAT	REA	% IMF	DWR
<b>P</b>	<b>3.46</b>	<b>3.25</b>	<b>0.28</b>	<b>14.21</b>	<b>3.5</b>	<b>3@100</b>

L456's maternal brother, Yardley Rest Assured, was a sale day favorite of our '22 sale selected by Jacob Rose of Bloomfield NM.





Y1 Royal Type, a maternal brother to L320's dam

**46 YARDLEY LAD L320****3/4 SM 1/4 AN BD 2/18/2023 ASA 4242878**

COUNTY O	W/C LOADED UP
<b>HOT CHILI PEPPER</b>	RUBY NFF RHYTHM 475B
SFI SHES A BOMB D7	HIGH VOLTAGE
	SFI INFATUATION Y5
YARDLEY NORTH FORCE	NORTHERN OCTANE
<b>MISS YARDLEY F116</b>	GCC STEEL FORCE 199X
MISS YARDLEY Y65	OCC PROTOTYPE
	MISS YARDLEY S64

DATA	
<b>BW</b>	<b>89</b>
<b>WW</b>	<b>627</b>
<b>YW</b>	<b>1165</b>
<b>CE</b>	<b>9.8</b>
<b>BW</b>	<b>2.6</b>
<b>WW</b>	<b>75.6</b>
<b>YW</b>	<b>109.9</b>
<b>MK</b>	<b>19.8</b>
<b>PAP</b>	<b>37</b>

H/P/S	WDA	TG	RIB FAT	REA	% IMF	DWR
<b>P</b>	<b>3.14</b>	<b>3.36</b>	<b>0.25</b>	<b>12.41</b>	<b>2.61</b>	<b>4@101</b>

L320's maternal grandam has been a real producer with seven calves averaging a 102 WW ratio.

**47 YARDLEY LAD L381****5/8 SM 3/8 AN BD 3/9/2023 ASA 4242932**

YARDLEY STANDOUT	LOVER BOY
<b>YARDLEY GRANDSTAND</b>	MISS YARDLEY C136
MISS YARDLEY F132	YARDLEY TOP NOTCH
	MISS YARDLEY C183
YARDLEY HILIGHT	YARDLEY HIGH REGARD
<b>MISS YARDLEY H148</b>	MISS YARDLEY Z28
MISS YARDLEY B6	GCC TOTAL RECALL
	MISS YARDLEY Z47

DATA	
<b>BW</b>	<b>88</b>
<b>WW</b>	<b>677</b>
<b>YW</b>	<b>1209</b>
<b>CE</b>	<b>11.7</b>
<b>BW</b>	<b>1.1</b>
<b>WW</b>	<b>69.6</b>
<b>YW</b>	<b>104.4</b>
<b>MK</b>	<b>21.3</b>
<b>PAP</b>	<b>36</b>

H/P/S	WDA	TG	RIB FAT	REA	% IMF	DWR
<b>P</b>	<b>3.18</b>	<b>3.32</b>	<b>0.21</b>	<b>14.03</b>	<b>2.65</b>	<b>1@102</b>



Impressive sire of L381

**48 YARDLEY LAD L344****5/8 SM 3/16 MA BD 2/28/2023 ASA 4242900**

SFI ACHIEVEMENT	PAYS TO BELIEVE
<b>YARDLEY ACCELERATE</b>	SFI MISS LACEY
MISS YARDLEY E88	YARDLEY HIGH REGARD
	MISS YARDLEY B15
Y1 WHIRL OF A DREAM	DREAM ON
<b>MISS YARDLEY A188</b>	MISS YARDLEY B75
MISS YARDLEY X128	SDN IMPACT
	MISS YARDLEY R126

DATA	
<b>BW</b>	<b>85</b>
<b>WW</b>	<b>688</b>
<b>YW</b>	<b>1182</b>
<b>CE</b>	<b>11.3</b>
<b>BW</b>	<b>0.5</b>
<b>WW</b>	<b>68.6</b>
<b>YW</b>	<b>102.5</b>
<b>MK</b>	<b>19.2</b>
<b>PAP</b>	<b>38</b>

H/P/S	WDA	TG	RIB FAT	REA	% IMF	DWR
<b>P</b>	<b>3.24</b>	<b>3.09</b>	<b>0.22</b>	<b>11.89</b>	<b>1.67</b>	<b>9@98</b>

L381's maternal grandam has an impeccable track record of 9@104.



Confident maternal brother to L344

**49 YARDLEY LAD L292****3/4 SM 1/4 AN BD 2/9/2023 ASA 4242858**

DURACELL	DREAM ON
<b>LOVER BOY</b>	HTP SVF HONEYDEW
RIGHT TO LOVE 015U	BUILT RIGHT
	QUEENS VALENTINE R9
W/C BANCHOR	CCR ANCHOR
<b>MISS YARDLEY J96</b>	W/C MISS WERNING 46B
MISS YARDLEY E232	BUSHWACKER O'REILLY
	MISS YARDLEY B141

DATA	
<b>BW</b>	<b>78</b>
<b>WW</b>	<b>674</b>
<b>YW</b>	<b>1126</b>
<b>CE</b>	<b>12.4</b>
<b>BW</b>	<b>0</b>
<b>WW</b>	<b>78.4</b>
<b>YW</b>	<b>113</b>
<b>MK</b>	<b>28.9</b>
<b>PAP</b>	<b>39</b>

H/P/S	WDA	TG	RIB FAT	REA	% IMF	DWR
<b>P</b>	<b>2.91</b>	<b>2.83</b>	<b>0.18</b>	<b>12.56</b>	<b>2.45</b>	<b>1@102</b>

L292's maternal brothers have averaged \$6,000.



Impressive full brother to J96





THSF Lover Boy, the renowned sire of L275

## 50 YARDLEY LAD L275

3/4 SM 1/4 AN		BD 2/4/2023	ASA 4242841	DATA		
DURACELL	DREAM ON			BW	73	
<b>LOVER BOY</b>	HTP SVF HONEYDEW			WW	645	
RIGHT TO LOVE 015U	BUILT RIGHT			YW	1126	
	QUEENS VALENTINE R9			CE	13.8	
BOONE PICKENS	REMINGTON LOCK N LOAD			BW	-0.6	
<b>MISS YARDLEY J57</b>	TJSC KNOCKOUT 121Y			WW	70.6	
MISS YARDLEY C240	BUSHWACKER			YW	101.5	
	MISS YARDLEY A47			MK	27.7	
				PAP	37	
H/P/S	WDA	TG	RIB FAT	REA	% IMF	DWR
P	2.87	3.01	0.22	11.93	3.52	1@100

## 51 YARDLEY LAD L269

5/8 SM 3/8 AN		BD 1/31/2023	ASA 4242834	DATA		
W/C BANCHOR	CCR ANCHOR			BW	79	
<b>YARDLEY ABUNDANCE</b>	W/C MISS WERNING 46B			WW	640	
MISS YARDLEY E232	BUSHWACKER O'REILLY			YW	1199	
	MISS YARDLEY B141			CE	12.1	
YARDLEY TOP NOTCH	SANDEEN UPPER CLASS			BW	0.4	
<b>MISS YARDLEY J147</b>	HSF VICTORIA P30			WW	74.7	
MISS YARDLEY B173	GCF BILLY THE KID			YW	117.2	
	MISS YARDLEY R188			MK	24.7	
				PAP	39	
H/P/S	WDA	TG	RIB FAT	REA	% IMF	DWR
P	3.01	3.5	0.17	12.22	2.74	1@100



Stylish maternal brother of L269

## 52 YARDLEY LAD L338

3/4 SM 1/4 AN		BD 2/25/2023	ASA 4242894	DATA		
COUNTY O	W/C LOADED UP			BW	89	
<b>HOT CHILI PEPPER</b>	RUBY NFF RHYTHM 475B			WW	728	
SFI SHES A BOMB D7	HIGH VOLTAGE			YW	1255	
	SFI INFATUATION Y5			CE	10.2	
YARDLEY STANDOUT	LOVER BOY			BW	1.7	
<b>MISS YARDLEY G2</b>	MISS YARDLEY C136			WW	84.7	
MISS YARDLEY E41	WS STEPPING STONE			YW	124.8	
	MISS YARDLEY C205			MK	20.8	
				PAP	45	
H/P/S	WDA	TG	RIB FAT	REA	% IMF	DWR
P	3.38	3.29	0.19	14.66	4.2	3@104



Deep sided maternal brother of L338's dam

## 53 YARDLEY LAD L306

5/8 SM 3/8 AN		BD 2/22/2023	ASA 4242869	DATA		
CCR ANCHOR	CCR COWBOY CUT			BW	87	
<b>W/C BANCHOR</b>	CCR MS BARB 2120Z			WW	727	
W/C MISS WERNING 46B	REMINGTON LOCK N LOAD			YW	1051	
	MISS WERNING 715T			CE	12.1	
YARDLEY STANDARD	YARDLEY STANDOUT			BW	0.3	
<b>MISS YARDLEY J12</b>	MISS YARDLEY E220			WW	72.7	
MISS YARDLEY G157	YARDLEY TOP NOTCH			YW	91.7	
	MISS YARDLEY D159			MK	25.8	
				PAP	41	
H/P/S	WDA	TG	RIB FAT	REA	% IMF	DWR
S	2.79	2.02	0.17	12.14	2.5	1@106



Feminine made maternal grandam of L306.

Check out this bull's impressive WW, 727#!



**54 YARDLEY LAD L419****3/4 SM 1/4 AN BD 3/18/2023 ASA 4242966****YARDLEY ACCELERATE**  
MISS YARDLEY E88

YARDLEY TOP NOTCH

**MISS YARDLEY G136**

GCC STEEL FORCE 199X

PAYS TO BELIEVE  
SFI MISS LACEY  
YARDLEY HIGH REGARD  
MISS YARDLEY B15  
SANDEEN UPPER CLASS  
HSF VICTORIA P30  
STEEL FORCE  
OCC MISS IMPACT 434R

DATA	
<b>BW</b>	<b>92</b>
<b>WW</b>	<b>749</b>
<b>YW</b>	<b>1247</b>
<b>CE</b>	<b>10.6</b>
<b>BW</b>	<b>1.3</b>
<b>WW</b>	<b>75</b>
<b>YW</b>	<b>113.4</b>
<b>MK</b>	<b>24.8</b>
<b>PAP</b>	<b>NA</b>

H/P/S	WDA	TG	RIB FAT	REA	% IMF	DWR
<b>S</b>	<b>3.4</b>	<b>3.11</b>	<b>0.13</b>	<b>11.81</b>	<b>2.72</b>	<b>3@106</b>

L419's maternal grandam and cornerstone donor 199X stands as the most profitable and prolific herd matron to date having produced multiple sale toppers that have sold to the most elite programs on our continent including Jones Show Cattle of Ohio, Griswold Cattle of Oklahoma, and Wheatland Cattle of Saskatchewan Canada. Her offspring include \$16,500 Yardley Blitz, \$25,500 Yardley Bank Vault, and \$14,000 Yardley Highway. L419's dam is a full sister to \$12,500 Yardley Top Mark, and \$10,000 Yardley Top Cut.

**55 YARDLEY LAD L444****PB SM BD 3/22/2023 ASA 4242986****REMEDY 1054J**  
WAGR MS LIGHTNING 8157F

MR HOC BROKER

**MISS YARDLEY H130**

MISS YARDLEY W173

UPRISING  
B&K CREAM SODA 8D  
WAGR LIGHTNING  
WAGR 3154A  
STEEL FORCE  
JM BF H25  
YARDLEY IMPRESSIVE  
MISS YARDLEY T79

DATA	
<b>BW</b>	<b>84</b>
<b>WW</b>	<b>716</b>
<b>YW</b>	<b>968</b>
<b>CE</b>	<b>7.6</b>
<b>BW</b>	<b>2.3</b>
<b>WW</b>	<b>67.1</b>
<b>YW</b>	<b>98.1</b>
<b>MK</b>	<b>19.9</b>
<b>PAP</b>	<b>34</b>

H/P/S	WDA	TG	RIB FAT	REA	% IMF	DWR
<b>S</b>	<b>2.86</b>	<b>1.58</b>	<b>0.13</b>	<b>12.02</b>	<b>2.67</b>	<b>2@106</b>

**56 YARDLEY LAD L356****3/4 SM 5/32 MA 3/32 AN BD 3/1/2023 ASA 4242911****MR SR 71 RIGHT NOW**  
MISS SR C1538

WHIRL OF A DREAM

**MISS YARDLEY F115**

MISS YARDLEY B112

SUBSTANCE  
HOOK'S WILL POWER 24W  
HOOK'S YELLOWSTONE  
MISS FR A309  
DREAM ON  
MISS YARDLEY B75  
GCF BILLY THE KID  
MISS YARDLEY S2

DATA	
<b>BW</b>	<b>87</b>
<b>WW</b>	<b>711</b>
<b>YW</b>	<b>1034</b>
<b>CE</b>	<b>11.3</b>
<b>BW</b>	<b>1.2</b>
<b>WW</b>	<b>73.7</b>
<b>YW</b>	<b>100.2</b>
<b>MK</b>	<b>18.2</b>
<b>PAP</b>	<b>34</b>

H/P/S	WDA	TG	RIB FAT	REA	% IMF	DWR
<b>P</b>	<b>2.8</b>	<b>2.02</b>	<b>0.17</b>	<b>11.57</b>	<b>3.57</b>	<b>4@100</b>

L356's sire, Right Now, is the exciting calving ease outcross sire that Werning's purchased from Schnabel Ranch. He offers elite curve bending genetics and posts calving ease, growth, and indexes at the top % of the breed in most traits. L356 got coccidiosis bad and lost a lot of weight, he is doing a lot better and certainly would have looked and weighed up a lot better if he had not gotten sick.



Full brother of L419's dam



Remedy 1054J, the impressive sire of L444



Mr. SR71 Right Now, complete sire of L356

***You parents of the wilful and the wayward! Don't give them up. Don't cast them off. They are not utterly lost. The Shepherd will find his sheep. They were his before they were yours--long before he entrusted them to your care; and you cannot begin to love them as he loves them. They have but strayed in ignorance from the Path of Right, and God is merciful to ignorance. Only the fulness of knowledge brings the fulness of accountability. Our Heavenly Father is far more merciful, infinitely more charitable, than even the best of his servants, and the Everlasting Gospel is mightier in power to save than our narrow finite minds can comprehend. - Orson F. Whitney***





# BLACK GRANITE

## 57 YARDLEY BLACK GRANITE L355

ANGUS

BD 3/2/2023

AAA 20684055

DATA

OCC JUNEAU  
**COLEMAN ROCK**  
 COLEMAN DONNA 714

OCC EMBLAZON  
 OCC Dixie Erica 903E  
 CONNEALY ONWARD  
 COLEMAN DONNA 386  
 COLEMAN CHARLO  
 SAV BLACKCAP MAY 4136  
 LIMESTONE DARKHORSE  
 MISS YARDLEY M213

SAV PRESIDENT  
**MISS YARDLEY G103**  
 MISS YARDLEY X98

BW	94
WW	759
YW	1303
CE	4
BW	3
WW	82
YW	141
MK	24
PAP	NA

H/P/S	WDA	TG	RIB FAT	REA	% IMF	DWR
P	3.52	3.4	0.21	12.7	3.17	3@104

Black Granite is everything his name implores and more, he is a moderate made, masculine bull with pounds in the right package, the kind cattlemen seek after, and ranchers want. He comes loaded with abundant thickness, a powerful hind quarter, and an impressive performance track record. He's a real scale masher with an impressive WW and attractive YW. He ranks in the top 10% of the breed for WW and the top 15% of the breed for YW. His sire, Coleman Rock 7200 is a full brother to the top-selling Lot 1 cow of Coleman's 2016 sale who sold for \$80,000 going to Lawson Farms of Virginia. His semen sells for \$100/unit.



\$7,500 maternal brother of Black Granite's dam



The show stopping sire of Black Granite



Smooth shouldered maternal brother of Black Granite





# CONSTITUTION

## 58 YARDLEY CONSTITUTION L345

ANGUS		BD 2/28/2023		AAA 20700881		DATA		
COLEMAN CHARLO	COLEMAN BRAVO	COLEMAN DONNA 714	OCC PAXTON	BOHI ABIGALE 6014	CONNEALY ONWARD	COLEMAN DONNA 386	BW	78
							WW	707
							YW	1318
							CE	9
SINCLAIR MOUNTAIN PASS	MISS YARDLEY Z93	MISS YARDLEY T187	PRIME TIME	KINOCHTRY BEAUTY V1490	YARDLEY PINECREEK TIME	MISS YARDLEY P145	BW	1
							WW	63
							YW	122
							MK	25
							PAP	46
H/P/S	WDA	TG	RIB FAT	REA	% IMF	DWR		
P	3.51	3.82	0.29	11.8	3.48	13@108		



\$11,500 maternal brother to Constitution



Maternal brother to Constitution



\$14,000 maternal sister to Constitution



Fancy maternal brother of Constitution

We are excited to start our Angus offering with Yardley Constitution. He's a bull to build a cow herd around; with a tremendous amount of real-world depth and powerful dimension blended in a well-balanced, eye appealing package, you'll love his impressive hind quarter, fancy front and ideal leg set. He boasts the highest performance record in our Angus herd with a mere 78# BW, an impressive 708# WW and a massive 1318# YW. He stands tall in the top 1% of the Angus breed for \$M and the top 10% for \$EN.

-Constitution's stunning dam is one of the most profitable and prolific, cornerstone herd matrons at the YCC. Her accomplishments include: a weaning ratio of 13@108 averaging 710#, producing stellar herd sire Yardley Mountaineer, a \$14,000 donor prospect in our '20 sale, selected by Gary Sumpter of CA, and a lead off Angus, \$11,500, Yardley The Duke, selected by our good friend Lou Seever of Pleasanton CA.

**GOD IS ANXIOUSLY WAITING FOR THE CHANCE TO ANSWER YOUR PRAYERS AND FULFIL YOUR DREAMS.  
JUST AS HE ALWAYS HAS, BUT HE CAN'T IF YOU DONT PRAY, AND HE CAN'T IF YOU DON'T DREAM...  
IN SHORT HE CAN'T IF YOU DON'T BELIEVE.**

**- JEFFREY R. HOLLAND**





# DECLARATION

## 59 YARDLEY DECLARATION L300

ANGUS	BD 2/11/2023	AAA 20679458	DATA	
SAV PRESIDENT	COLEMAN CHARLO		BW	84
SAV PATRIOT	SAV BLACKCAP MAY 4136		WW	685
SAV MADAME PRIDE 5809	SAV INTERNATIONAL		YW	1164
	SAV MADAME PRIDE 0075		CE	6
SAV WEST RIVER	SAV BISMARCK		BW	1.1
MISS YARDLEY E16	SAV EMBLYNETTE 0491		WW	65
MISS YARDLEY S19	LCC NEW STANDARD		YW	111
	MISS YARDLEY P197		MK	31
			PAP	NA

H/P/S	WDA	TG	RIB FAT	REA	% IMF	DWR
P	3.19	2.99	.21	11.2	2.99	5@107

Declaration is as deep and soggy as you can make. He's loaded with a ton of red meat and has the look of an easy keeper. He's a big butted, deep sided, high performing bull that possess eye appeal and structural design. His maternal grandam epitomizes the ideal Angus brood cow. She was deep bodied, smooth shouldered, feminine fronted and powerful hipped with an ideal leg set, exceptional udder placement, small teats and correct structure throughout. She maintained an astounding track record of 12@106; powerful sons and substantial daughters many of which are retained in our herd. She also produced our '09 \$10,000 high selling Angus bull as a first calf heifer selected by the Walkers of Menan ID.

**IF YOU WANT TO CHANGE THE WORLD  
GO HOME AND LOVE YOUR FAMILY.  
- MOTHER THERESA**



Maternal sister of Declaration



Impressive donor grandam of Declaration



**60 YARDLEY SYNERGIZE L265**

ANGUS	BD 1/30/2023	AAA 20688965	DATA			
KR SYNERGY	BLACK JACK	BLACK JACK	BW	68		
		WK BLACKBIRD 5066	WW	665		
		SUMMIT CREST FOCUS	YW	1172		
	DICKAUS 2U66 FW 416	DICKAUS FW CASH 239	CE	5		
			BW	0.4		
	SAV RESOURCE	RITO 707	WW	72		
MISS YARDLEY J88		SAV BLACKCAP MAY 4136	YW	123		
		DUFF NEW EDITION	MK	23		
	MISS YARDLEY W172	MISS YARDLEY G69	PAP	36		
H/P/S	WDA	TG	RIB FAT	REA	% IMF	DWR
P	2.99	3.17	.26	13.1	3.51	1@102

Synergize comes stamped with the look of greatness so characteristic of the offspring and descendants of his exceptional maternal grandam, W172; our favorite cornerstone donor daughter of Duff New Edition and a sure-fire home run hitter. She was a flawlessly designed feminine fronted, angular female that produced a \$20,000 sale favorite and another \$16,500 highlight in '14. As a first calf heifer she weaned a \$6,000 standout and later a \$7,500 standout bred, selected by our good friend Ronnie Smith of Denton TX. She was also the maternal grandam to '16 Focus on the Female sale topper, \$24,000 Yardley Bring It, selected by longtime customer Greg Kroupa of SD.

**61 YARDLEY COUNTRYMAN L317**

ANGUS	BD 2/16/2023	AAA 20693381	DATA			
SAV PRESIDENT	COLEMAN CHARLO		BW	80		
SAV PATRIOT	SAV BLACKCAP MAY 4136		WW	709		
	SAV INTERNATIONAL		YW	1067		
SAV MADAME PRIDE 0075	SAV MADAME PRIDE 0075		CE	5		
	SAV PIONEER		BW	1.3		
SAV PATRON	SAV EMBLYNETTE 7566		WW	55		
MISS YARDLEY D158	OCC REAR END		YW	92		
	MISS YARDLEY A47		MK	32		
	MISS YARDLEY X188		PAP	35		
H/P/S	WDA	TG	RIB FAT	REA	% IMF	DWR
P	3.01	2.24	.18	11.7	2.78	7@103

If you're looking for a deep bodied, moderate made bull to soften up a set of heifers then Countryman is sure to please. He'll make some awesome, easy keeping females that will please the eyes and the pocketbook. He ranks in the top 10% of the breed for \$M and the top 15% of the breed for \$EN.

**62 YARDLEY NOBLE CITIZEN L315**

ANGUS		BD 2/15/2023		AAA 20687199		DATA	
SAV PATRIOT	SAV PRESIDENT	COLEMAN CHARLO				BW	80
	SAV MADAME PRIDE 5809	SAV BLACKCAP MAY 4136				WW	655
		SAV INTERNATIONAL				YW	1110
		SAV MADAME PRIDE 0075				CE	5
	CONNEALY FINAL PRODUCT	CONNEALY PRODUCT				BW	0.7
MISS YARDLEY Y93		EBONISTA OF CONANGA 471				WW	56
	MISS YARDLEY U203	OCC RISING SUN				YW	93
		E BAR V BARBARA 7301				MK	30
						PAP	NA
H/P/S	WDA	TG	RIB FAT	REA	% IMF	DWR	
P	2.98	2.85	.18	13	2.84	13@101	

The quality just keeps coming with these sons of SAV Patriot. Noble Citizen possesses many of the same characteristics that have made his paternal siblings so desirable. He is extremely deep bodied, strong topped, and loaded with red meat and added muscle expression in a stylish performance packed package. His maternal brother, Yardley Copyright was an \$8,000 standout Angus selected by our good friend and longtime customer Boyd Snow of Jensen UT. Their productive dam has averaged 692# on five calves, her dam in turn has a weaning ratio of 9@103 for an average of 693#!



Maternal grandam of Synergize



Maternal brother to the dam of Synergize



\$8,000 maternal brother to Countryman.



\$7,250 maternal brother of Noble Citizen



**63 YARDLEY LAD L297**

ANGUS		BD 2/13/2023		AAA 20689063		DATA	
LD CAPITALIST 316	CONNEALY CAPITALIST	SAV FINAL ANSWER				BW	68
	LD DIXIE ERICA 2053	PITA CONANGA 8821				WW	609
		FUTURE DIRECTION				YW	1002
		LD DIXIE ERICA OAR 0853				CE	9
		SAV CATALYST				BW	0.4
MISS YARDLEY J20		SAV RESOURCE				WW	57
		SAV EMBLYNETTE 0491				YW	97
		SAV PRESIDENT				MK	23
	MISS YARDLEY G103	MISS YARDLEY X98				PAP	34
H/P/S	WDA	TG	RIB FAT	REA	% IMF	DWR	
P	2.58	2.46	.19	15	3.4	1@98	

L297 is sired by the proven, popular, calving ease sire LD Capitalist 316. 316 stands on a perfect foot, with flawless structure and soundness. He stamps his calves with a look of style and quality blended with added muscle and performance. With a mere 68# BW L297 is a smooth shouldered, elite calving ease, herd sire prospect.

**64 YARDLEY LAD L310**

ANGUS		BD 2/14/2023	AAA 20695073	DATA		
COLEMAN BRAVO	COLEMAN CHARLO	OCC PAXTON		BW	85	
		BOHI ABIGALE 6014		WW	580	
		CONNEALY ONWARD		YW	1040	
	COLEMAN DONNA 714	COLEMAN DONNA 386		CE	7	
MISS YARDLEY C27	O'REILLY FACTOR	SAV FINAL ANSWER		BW	1.8	
		VIN-MAR EDELLA 2827		WW	44	
		BATTLE CRY		YW	86	
	MISS YARDLEY R11	MISS YARDLEY N181		MK	26	
				PAP	41	
H/P/S	WDA	TG	RIB FAT	REA	% IMF	DWR
P	2.82	2.88	0.24	10.2	3.54	8@102

L310 was born during one of the most bitter nights on the desert during a storm that took several new babies. Fortunately, we were able to save him by putting him in the truck with the heater turned on full blast, all that is except the tips of his ears! His dam, C27, was Jose Guzman's pick of the heifer calf crop. She is a remarkable individual with the front pasture look; her previous calves have been sale day favorites including our \$12,000 '20 high selling Angus, Yardley Accolade, purchased by great customer Darrel Shawcroft of LaJara CO. C27's maternal line traces back to N181, the dam of our incomparable herd sire Skipper and a \$16,000 show heifer. N181 sold for \$20,000 to our good friends Wayne and Barb Olrichs of Norfolk NE.

**65 YARDLEY LAD L340**

ANGUS		BD 3/6/2023		AAA 20695075		DATA	
COLEMAN BRAVO	COLEMAN CHARLO	OCC PAXTON				BW	80
	COLEMAN DONNA 714	BOHI ABIGALE 6014				WW	653
		CONNEALY ONWARD				YW	926
		COLEMAN DONNA 386				CE	11
						BW	0.3
MISS YARDLEY Z13	HF RANGER SMITH	HF KODIAK 5R				WW	51
		HF ANNIE 53R				YW	88
	MISS YARDLEY X79	SCC APACHE BRAVE				MK	20
		MISS YARDLEY S63				PAP	39
H/P/S	WDA	TG	RIB FAT	REA	% IMF	DWR	
P	2.78	2.61	0.2	9.9	3.59	15@104	

L340's long-lived dam records a weaning ratio of 15@104 averaging 705# WWs, a testament of longevity and productivity. His maternal brother, Yardley Topline, was my dad's favorite Angus in the sale in '14, and second high selling Angus for \$10,000.



The renowned sire of L297



\$12,000 maternal brother of L310

Big ribbed maternal brother of L340



***“The happy life is not ushered in at any age to the sounds of drums and trumpets. It grows upon us year by year, little by little, until at last we recognize that we have it. It is achieved ... by a body of work done so well that we can lift our heads with assurance and look the world in the eye.” - Thomas S. Monson***



**66 YARDLEY LAD L330**

ANGUS		BD 2/23/2023		AAA 20690349		DATA	
COLEMAN BRAVO	COLEMAN CHARLO	OCC PAXTON				BW	82
	COLEMAN DONNA 714	BOHI ABIGALE 6014				WW	589
		CONNEALY ONWARD				YW	1022
		COLEMAN DONNA 386				CE	9
		COLEMAN CHARLO				BW	1
MISS YARDLEY H30	SAV CHECKMATE	COLEMAN CHARLO				WW	51
		SAV EMBLYNETTE 6506				YW	96
		SAV WEST RIVER				MK	23
	MISS YARDLEY E16	MISS YARDLEY S19				PAP	38
H/P/S	WDA	TG	RIB FAT	REA	% IMF	DWR	
P	2.67	2.71	0.25	11.6	3.55	3@103	

L330 is sired by the \$450,000 record setting bull, Coleman Bravo 6313. Bravo has done a tremendous job for us, producing our \$12,000 '20 high selling Angus, Yardley Accolade. Larry Coleman said of Bravo, "I'm not really into writing footnotes. With Bravo, I could write a couple of pages, but I'll keep this short and sweet. Bravo is a rare individual, I feel he's the best bull we've ever made. Bravo is a result of years of our breeding philosophies, and he is a combination of my two favorite animals we've bred here."

**67 YARDLEY LAD L308**

ANGUS		BD 2/27/2023		AAA 20679457		DATA	
SAV CATALYST	SAV RESOURCE	RITO 707				BW	70
		SAV BLACKCAP MAY 4136				WW	621
		SAV FINAL ANSWER				YW	1050
	SAV EMBLYNETTE 0491	SAV EMBLYNETTE 7566				CE	7
		TC STOCKMAN 365				BW	1.2
MISS YARDLEY J170		TC STOCKMAN				WW	53
		TC PRIDE 0014				YW	91
		COLEMAN CHARLO				MK	24
	MISS YARDLEY F35	MISS YARDLEY D35				PAP	NA
H/P/S	WDA	TG	RIB FAT	REA	% IMF	DWR	
P	2.71	2.68	0.22	10.6	3.48	1@99	

L308 has a featherlight 70# BW.

**68 YARDLEY LAD L266**

ANGUS		BD 1/30/2023		AAA 20689062		DATA	
LD CAPITALIST 316	CONNEALY CAPITALIST	SAV FINAL ANSWER				BW	70
	LD DIXIE ERICA 2053	PITA CONANGA 8821				WW	593
		FUTURE DIRECTION				YW	1097
		LD DIXIE ERICA OAR 0853				CE	4
		LD DIXIE ERICA OAR 0853				BW	1.8
MISS YARDLEY J154	YARDLEY CHALLENGER	SAV CATALYST				WW	59
		MISS YARDLEY D88				YW	104
		SAV 654X RAINMAKER 7133				MK	26
	MISS YARDLEY G10	MISS YARDLEY E7				PAP	NA
H/P/S	WDA	TG	RIB FAT	REA	% IMF	DWR	
P	2.73	3.15	0.2	12.1	3.75	NA	

L266's popular, top ranking AI sire LD Capitalist 316 stands on a perfect foot, his structure and soundness are flawless; he stamps his calves with a look of style and quality coupled with added muscle and performance, and is an elite calving ease sire with exceptional growth.

**70 YARDLEY LAD L471**

ANGUS		BD 4/26/2023		AAA 20679474		DATA	
SAV CATALYST	SAV RESOURCE	RITO 707		BW	94		
	SAV EMBLYNETTE 0491	SAV BLACKCAP MAY 4136		WW	665		
		SAV FINAL ANSWER		YW	1093		
		SAV EMBLYNETTE 7566		CE	-1		
	O'REILLY FACTOR	SAV FINAL ANSWER		BW	3.4		
MISS YARDLEY C97		VIN-MAR EDELLA 2827		WW	61		
	MISS YARDLEY U92	DUFF NEW EDITION		YW	112		
		MISS YARDLEY C72		MK	22		
				PAP	39		
H/P/S	WDA	TG	RIB FAT	REA	% IMF	DWR	
P	3.07	2.67	*0.16	*9.4	*3.38	8@101	

L471's maternal brother was a standout of our '20 calf crop, Yardley Come Back.



Impressive sire of L330



The proven sire of L308, SAV Catalyst



Impressive sire of L266

**69 YARDLEY LAD L426**

ANGUS	BD 3/20/2023	AAA 20679470	DATA			
YARDLEY CHARBROIL	COLEMAN CHARLO	OCC PAXTON	BW	76		
	MISS YARDLEY D56	BOHI ABIGALE 6014	WW	675		
		SAV INTERNATIONAL	YW	1055		
		MISS YARDLEY X138	CE	8		
	SAV 654X RAINMAKER 7133	COLEMAN CHARLO	BW	0.2		
MISS YARDLEY H66		SAV BLACKCAP MAY 5853	WW	54		
	MISS YARDLEY E38	SAV PATRON	YW	92		
		MISS YARDLEY T66	MK	28		
			PAP	38		
H/P/S	WDA	TG	RIB FAT	REA	% IMF	DWR
P	2.83	2.37	*0.11	*11.5	*2.75	2@102





Big hipped maternal brother to L332.

**71 YARDLEY LAD L332**

ANGUS		BD 2/25/2023		AAA 20684904		DATA	
KR CADILLAC RANCH	KR CADILLAC JACK	BLACK JACK				BW	80
		WK BLACKBIRD 5066				WW	642
		BARSTOW CASH				YW	1188
	KR PRIDE 4031	SUMMITCREST PRIDE 07X3				CE	7
		RITO 707				BW	0.9
MISS YARDLEY F143	SAV RESOURCE	SAV BLACKCAP MAY 4136				WW	67
		SAV ANGUS VALLEY				YW	124
	MISS YARDLEY C220	MISS YARDLEY Z103				MK	20
						PAP	38
H/P/S	WDA	TG	RIB FAT	REA	% IMF	DWR	
P	3.22	3.41	0.38	11.8	5.05	5@100	

L332's sire "Synergy" is ultra-correct, square and attractive in his design with top EPD percentile ranks in nearly all traits! He combines tremendous eye appeal with leading data! He posted a 115 Weaning Ratio and his dam has 2@88 BR, 2@109 WW.

**72 YARDLEY LAD L400**

ANGUS		BD 3/6/2023		AAA 20679464		DATA	
YARDLEY CATTLEMAN	SAV CATALYST	SAV RESOURCE				BW	79
	YARDLEY LAD G601	SAV EMBLYNETTE 0491				WW	602
		COLEMAN BRAVO				YW	1097
		MISS YARDLEY W172				CE	11
		COLEMAN BRAVO				BW	0.5
MISS YARDLEY J30	COLEMAN ACE 989	COLEMAN BRAVO				WW	57
		COLEMAN DONNA 439				YW	100
	MISS YARDLEY B130	YARDLEY BLACK MUSTANG				MK	27
		MISS YARDLEY X138				PAP	40
H/P/S	WDA	TG	RIB FAT	REA	% IMF	DWR	
P	2.79	3.09	0.25	11.5	3.37	1@101	

L400's dam, J30 was the lead off featured Angus in our '23 Focus on the Female sale. J30 hails from a long line of feminine fronted, front pasture females that flat out produce. Her maternal brother was a sale day favorite selected by Clarke Cattle of Delta Utah.

**73 YARDLEY LAD L363**

ANGUS	BD 3/3/2023	AAA 20689061	DATA			
CONNEALY CAPITALIST <b>LD CAPITALIST 316</b> LD DIXIE ERICA 2053	SAV FINAL ANSWER		<b>BW</b>	<b>75</b>		
	PITA CONANGA 8821		<b>WW</b>	<b>621</b>		
	FUTURE DIRECTION		<b>YW</b>	<b>1035</b>		
	LD DIXIE ERICA OAR 0853		<b>CE</b>	<b>4</b>		
YARDLEY MONSOON <b>MISS YARDLEY J195</b> MISS YARDLEY Y103	SAV 654X RAINMAKER 7133		<b>BW</b>	<b>1.9</b>		
	MISS YARDLEY E38		<b>WW</b>	<b>57</b>		
	CONNEALY FINAL PRODUCT		<b>YW</b>	<b>97</b>		
	MISS YARDLEY U92		<b>MK</b>	<b>26</b>		
			<b>PAP</b>	<b>NA</b>		
H/P/S	WDA	TG	RIB FAT	REA	% IMF	DWR
<b>P</b>	<b>2.67</b>	<b>2.59</b>	<b>0.13</b>	<b>10.2</b>	<b>2.64</b>	<b>1@99</b>

L363's maternal line traces back to cornerstone herd matron C72. Her influential daughters and posterity have been the backbone of our Angus program producing several donors such as S19 and Y64 along with several daughters that have had our high selling Angus bulls such as X164.

**74 YARDLEY LAD L417**

ANGUS		BD 3/18/2023	AAA 20679469	DATA		
SAV CATALYST	SAV RESOURCE	RITO 707		BW	86	
		SAV BLACKCAP MAY 4136		WW	633	
		SAV FINAL ANSWER		YW	1100	
	SAV EMBLYNETTE 0491	SAV EMBLYNETTE 7566		CE	-1	
		CONNEALY PRODUCT		BW	3.3	
	CONNEALY FINAL PRODUCT	CONNEALY PRODUCT		WW	58	
MISS YARDLEY Y103		EBONISTA OF CONANGA 471		YW	102	
		DUFF NEW EDITION		MK	25	
	MISS YARDLEY U92	MISS YARDLEY C72		PAP	NA	
H/P/S	WDA	TG	RIB FAT	REA	% IMF	DWR
P	2.97	2.92	0.24	11.5	3.78	14@106

L417's beautiful maternal grandam is one of our favorite Final Product daughters. She records an incredible 10@103 for a 680# WW average. His maternal grandam is one of our best daughters of, \$325,000 Duff New Edition. She raised a \$12,000 son, a \$9,000 son and a \$9,500 stylish bred heifer.



\$6,000 maternal brother to L400's dam



Deep bodied maternal brother to J195



\$7,000 maternal brother of L417





## 75 YARDLEY FINANCIER L459

5/8 SM 11/32 AN 1/32 CS BD 4/4/2023 ASA 4243001

		DATA
CCR ANCHOR	CCR COWBOY CUT	BW 90
<b>W/C BANCHOR</b>	CCR MS BARB 2120Z	WW 688
W/C MISS WERNING 46B	REMINGTON LOCK N LOAD	YW 1159
	MISS WERNING 715T	CE 11
YARDLEY STANDOUT	LOVER BOY	BW 0.7
<b>MISS YARDLEY G71</b>	MISS YARDLEY C136	WW 73.7
MISS YARDLEY E157	LLSF UPRISING	YW 106.5
	MISS YARDLEY U187	MK 25.3
		PAP 45

H/P/S	WDA	TG	RIB FAT	REA	% IMF	DWR
S	3.16	2.94	0.2	13.64	2.55	3@106

You've seen him in the ads, you loved him then and you'll love him even more now. You can't help but be impressed by the amount of power and substance this long-spined, stout hipped baldy possesses. He combines great athleticism and flex, with added width and increased dimension, on a sturdy, properly built frame. He is sure to throw front pasture females that will be a valued asset to your herd for years to come.



The performance packed sire of Financier

*"To hell there is an exit as well as an entrance. Hell is no place to which a vindictive judge sends prisoners to suffer and to be punished principally for his glory; but it is a place prepared for the teaching, the disciplining of those who failed to learn here upon the earth what they should have learned... No man will be kept in hell longer than is necessary to bring him to a fitness for something better. When he reaches that stage the prison doors will open and there will be rejoicing among the hosts who welcome him into a better state... for it is God's glory and his work to bring about the immortality and eternal life of man" - James E. Talmage*





## 76 YARDLEY GRAND PRIZE L399

3/4 SM 1/4 AN BD 3/11/2023 ASA 4242947

YARDLEY STANDOUT  
**YARDLEY GRANDSTAND**  
 MISS YARDLEY F132  
 WS STEPPING STONE  
**MISS YARDLEY G208**  
 MISS YARDLEY Y147

LOVER BOY  
 MISS YARDLEY C136  
 YARDLEY TOP NOTCH  
 MISS YARDLEY C183  
 W/C LOCK DOWN  
 WS MS UPGRADE Z15  
 DURACELL  
 MISS YARDLEY U187

DATA	
BW	82
WW	662
YW	1070
CE	13.4
BW	-0.7
WW	62.6
YW	89.8
MK	24.7
PAP	35

H/P/S	WDA	TG	RIB FAT	REA	% IMF	DWR
P	2.91	2.55	0.12	12.78	3.3	3@98

If you're searching for the old time look with modern depth and style here's your bull. He stands out in a crowd with his big top, stout hip, and fancy front. He's a powerfully made, phenotypic phenomenon that combines powerful performance, with a super complete stylish package. His dam produced Miss Yardley Jazzy, a fancy show heifer that Kade exhibited in Denver and stood reserve in her division at the NWSS.

**WE ALL ARE BLIND UNTIL WE SEE THAT IN THE HUMAN PLAN NOTHING IS WORTH THE MAKING IF IT DOES NOT MAKE THE MAN. WHY BUILD THESE CITIES GLORIOUS IF MAN UNBUILT GOES? IN VAIN WE BUILD THE WORLD, UNLESS THE BUILDER ALSO GROWS.**

**- EDWIN MARKHAM**



Fancy maternal sister of Grand Prize



\$6,500 maternal brother of Grand Prize





# LONGMIRE

## 77 YARDLEY LONGMIRE L365

PB SM	BD 3/3/2023	ASA 4242918	DATA
DURACELL	DREAM ON		BW 77
<b>LOVER BOY</b>	HTP SVF HONEYDEW		WW 640
RIGHT TO LOVE 015U	BUILT RIGHT		YW 1124
	QUEENS VALENTINE R9		CE 14.5
SFI ACHIEVEMENT	PAYS TO BELIEVE		BW -1
<b>MISS YARDLEY JAZZY J14</b>	SFI MISS LACEY		WW 74.6
MISS YARDLEY G208	WS STEPPING STONE		YW 111.5
	MISS YARDLEY Y147		MK 26.8
			PAP 45

H/P/S	WDA	TG	RIB FAT	REA	% IMF	DWR
S	2.89	3.02	0.18	14.2	3.23	1@100

Longmire is a tremendous beef specimen and the type and kind of cattle we strive to produce. Our good friend and astute cattle judge, Nick Whittier stated that Longmire was his favorite bull. He is built on a functional frame and blends all the parts to make an ideal breed piece. He is big hipped and powerful with a fancy, up-headed look, moving out with confidence, style, and presence. His dam, Miss Yardley Jazzy, was a fancy show heifer that Kade exhibited in Denver and stood reserve in her division at the NWSS. He ranks in the top 15% for CE and BW. If you are looking to make some fancy females or show steers you should check this guy out.



The beautifully made dam of Longmire







# REQUEST

## 78 YARDLEY REQUEST L339

PB SM	BD 2/27/2023	ASA 4242895	DATA
SO REMEDY 7F	UPRISING		<b>BW</b> 84
<b>REMEDY 1054J</b>	B&K CREAM SODA 8D		<b>WW</b> 670
WAGR MS LIGHTNING 8157F	WAGR LIGHTNING		<b>YW</b> 1201
	WAGR 3154A		<b>CE</b> 8.5
LOVER BOY	DURACELL		<b>BW</b> 2.3
<b>MISS YARDLEY H169</b>	RIGHT TO LOVE 015U		<b>WW</b> 74
MISS YARDLEY S7	DREAM ON		<b>YW</b> 108.8
	MISS YARDLEY P35		<b>MK</b> 23.2
			<b>PAP</b> 45

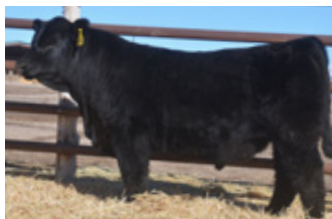
H/P/S	WDA	TG	RIB FAT	REA	% IMF	DWR
<b>P</b>	<b>3.15</b>	<b>3.32</b>	<b>0.18</b>	<b>11.43</b>	<b>2.41</b>	<b>1@102</b>

Cow families reign supreme at Yardley Cattle Company, Request hails from one of the best. His big bodied, stellar, long lived donor dam has been one of our best producers with an unparalleled track record; averaging 750# on 12 natural calves for a weaning ratio of 112; a true test of longevity, profitability, and performance! Past sons include Yardley Step Ahead, an \$11,000 leadoff, '17 sale day favorite selected by Mark Beitelspacher of Bowdle SD, Titanium Tough, selected by Kunzlers of Park Valley UT, and a powerful \$8,500 son selected by Derrell Shawcroft of La Jara CO.

***The more we let God take us over, the more truly ourselves we become - because He made us. He invented us. He invented all the different people that you and I were intended to be. - C.S. Lewis***



\$11,000 maternal brother of Request



\$8,500 maternal brother of Request



Intriguing maternal brother of Request



**CONTENDOR**

\$8,500 impressive maternal brother to Contendor

**79 YARDLEY CONTENDOR L331**

1/2 SM 1/2 AN		BD 2/23/2023		ASA 4242888		DATA	
YARDLEY CHALLENGER	SAV CATALYST		SAV RESOURCE			BW	68
			SAV EMBLYNETTE 0491			WW	642
	MISS YARDLEY D88		YARDLEY ROYAL JET			YW	1136
			MISS YARDLEY X56			CE	10
	YARDLEY STANDOUT		LOVER BOY			BW	-1.4
MISS YARDLEY G7			MISS YARDLEY C136			WW	69.7
			YARDLEY HIGH REGARD			YW	114.9
	MISS YARDLEY E155		FFC 284			MK	27.7
						PAP	39
H/P/S	WDA	TG	RIB FAT	REA	% IMF	DWR	
P	3.04	3.09	0.28	13.09	2.67	3@102	

**CHECK OUT THE CONTENDER!!!** This dude is one ripped, heavy weight champion with a massive hip, huge middle, and abundant rib shape and dimension. He moves out in confidence and power. His maternal brother was an \$8,500 feature of last year's sale selected by Lanny Putnam. If you're looking for your own "king of the ring" Contender is your cat!

**80 YARDLEY LAD L410**

5/8 SM 3/8 AN		BD 3/15/2023		ASA 4242960		DATA	
EGL FIRESTEEL		G A R SURE FIRE		BW		82	
LCDR AFFIRMED	TJ 22X		WW		661		
	CLRS GRADE-A		YW		1121		
	WS MISS SUGAR C4		CE		14.4		
WS ANISE A71		BW		-0.4			
STEEL FORCE		DREAM ON		WW		73.7	
GCC PRISCILLA F8120	SVF SHEZA BEAUTY L901		YW		106.8		
	NA		MK		21.4		
	GCC ETR PRISCILLA Z907		PAP		40		
NA							
H/P/S	WDA	TG	RIB FAT	REA	% IMF	DWR	
P	3.04	2.88	0.36	13.01	3.33	3@100	

L410's dam is a beautiful SimAngus, Steel Force daughter that we first encountered at Griswold's Classic sale. She was one we knew we needed to have. She's loaded with a ton of depth, ample thickness, consistent quality, and femininity; simply stated she's a true breed piece and L410 proves it.



Impressive sire of L410, LCDR Affirmed

**L410**





L409



Long-bodied maternal sister to L409's dam



Impressive maternal brother to L409's dam

## 81 YARDLEY LAD L409

3/4 SM 7/32 AN 1/32 MA BD 3/11/2023 ASA 4242958

SO REMEDY 7F UPRISING  
**REMEDY 1054J** B&K CREAM SODA 8D  
 WAGR MS LIGHTNING 8157F WAGR LIGHTNING  
 WAGR 3154A  
 YARDLEY HILIGHT YARDLEY HIGH REGARD  
**MISS YARDLEY H89** MISS YARDLEY Z28  
 MISS YARDLEY Z154 GCC WHIZARD  
 MISS YARDLEY S203

DATA	
BW	91
WW	655
YW	1175
CE	5.8
BW	4
WW	72.2
YW	109.8
MK	18.2
PAP	37

H/P/S	WDA	TG	RIB FAT	REA	% IMF	DWR
P	3.09	3.25	0.16	13.81	3.3	2@98

L409 is a soggy built, moderate made chunk. His maternal grandam has been a surefire producer of quality calves with a weaning ratio of 102 on seven head and three sons averaging \$7,250! Her maternal line traces back to N138, a cornerstone herd matriarch and a producer of many productive herd matrons, including dam of \$20,000 high seller, Yardley Overhaul.

## 82 YARDLEY LAD L362

3/8 SM 5/8 AN BD 2/28/2023 ASA 4242917

GCC TOTAL RECALL OCC MISSING LINK  
**GCC GOLD STANDARD** OCC JUANADA 741K  
 OCC JUANADA 925R OCC NITRO  
 YARDLEY TOP NOTCH OCCJUANADA 862M  
**MISS YARDLEY J210** SANDEEN UPPER CLASS  
 MISS YARDLEY A78 HSF VICTORIA P30  
 YARDLEY ZION  
 MISS YARDLEY U195

DATA	
BW	76
WW	736
YW	1139
CE	15.8
BW	-0.4
WW	59.3
YW	86.5
MK	19.8
PAP	33

H/P/S	WDA	TG	RIB FAT	REA	% IMF	DWR
P	3.01	2.52	0.28	14.13	4	2@108

L362's sire, Gold Standard, is one of the best Angus bulls Griswold Cattle has ever produced. He carries the same look and design of his great sire with a stout hip, big belly, and the easy fleshing package that GCC Total Recall is known for. The Gold Standard's are beautiful, it doesn't matter if they are PB Angus or have a little Simmy or Maine on the bottom side, they are the right kind of cattle. Gold Standard's offspring have sold for as high as \$70,000.



GCC Gold Standard, the popular sire of L362



L362



## 83 YARDLEY LAD L314

1/2 SM 1/4 AN 1/4 MA BD 2/17/2023 ASA 4242875

		DATA	
TJ FROSTY	IRONHIDE	BW	82
<b>TJ CHIEF</b>	TJ 58B	WW	619
TJ 52A	TJ NEW TIME LINE	YW	1121
	T J MISS DAY R1	CE	11.6
SIXTEEN STEP	RGRS SRG TWO STEP	BW	-0.5
<b>MISS YARDLEY G248</b>	WLE MISSY U409	WW	64.7
MISS YARDLEY B186	REBEL SOUL	YW	90.5
	MISS YARDLEY X156	MK	29.3
		PAP	39

H/P/S	WDA	TG	RIB FAT	REA	% IMF	DWR
P	2.97	3.14	0.26	12.77	3.1	3@100

L314 is a stout made, square hipped stud. He is sired by the popular TJ Chief. His dam's maternal brother sold to our good friends the Probst.



Powerful maternal brother to the dam of L314

## 84 YARDLEY LAD L408

3/4 SM 1/4 AN BD 3/7/2023 ASA 4242957

		DATA	
TJ FROSTY	IRONHIDE	BW	84
<b>TJ CHIEF</b>	TJ 58B	WW	616
TJ 52A	TJ NEW TIME LINE	YW	1118
	T J MISS DAY R1	CE	11.5
DUXS EXALT	CCR COWBOY CUT	BW	0.4
<b>MISS YARDLEY H125</b>	BRITT	WW	71.9
MISS YARDLEY E90	GCC NICKELS N DIMES	YW	103.7
	MISS YARDLEY Z57	MK	26.7
		PAP	37

H/P/S	WDA	TG	RIB FAT	REA	% IMF	DWR
P	2.92	3.14	0.16	13.57	2.49	2@94

L408's popular sire, TJ Chief, is an attractive, thick ended, deep ribbed stud with a genetic profile equal to his type. Dam has already posted 5 calves @113 for birth weight and 5@114 for weaning weight.



TJ Chief, the muscular sire of L408

## 85 YARDLEY LAD L291

PB SM BD 2/9/2023 ASA 4242857

		DATA	
DURACELL	DREAM ON	BW	61
<b>LOVER BOY</b>	HTP SVF HONEYDEW	WW	604
RIGHT TO LOVE 015U	BUILT RIGHT	YW	1066
	QUEENS VALENTINE R9	CE	16.6
KBHR SNIPER	BAR CK HUNTER	BW	-2.8
<b>MISS YARDLEY J140</b>	KBHR C078	WW	67.1
MISS YARDLEY X126	SVF/HTP PRESSURE POINT	YW	97.4
	MISS YARDLEY S60	MK	27.5
		PAP	43

H/P/S	WDA	TG	RIB FAT	REA	% IMF	DWR
P	2.71	2.89	0.21	11.81	3.02	1@98

If you're looking for a fancy red, don't pass this guy by. He's a big topped, massive hipped, strong boned breed piece with a big hoof and excellent structural soundness. His maternal grandam is the only red donor we've had. She was a beautiful herd matron, with a perfect udder and teat attachment. She always stays fat and weans a big calf, averaging a whopping 712# average with a 108 weaning ratio on eight head, including our \$14,000 high selling red, Yardley Excellence selected by Bill Carsten of CO and our leadoff lot one bull in '18, \$9,500 Clear Cut, purchased by our good friends the Kunzlers of Park Valley, UT. Her daughters are beautiful made matrons.



X126, the performance driven Maternal Grandam of L291

H428, the \$14,000 maternal brother to the dam of L291





Maternal sister to the grandam of L443



Yardley Substance, the proud sire of L328



The soggy maternal brother to the dam of L260



Deep bodied maternal brother to the dam of L287

**86 YARDLEY LAD L443****3/4 SM 1/4 AN BD 3/22/2023 ASA 4242985**

		DATA
SFI ACHIEVEMENT	PAYS TO BELIEVE	<b>BW 106</b>
<b>YARDLEY ACCELERATE</b>	SFI MISS LACEY	<b>WW 673</b>
MISS YARDLEY E88	YARDLEY HIGH REGARD	<b>YW 1231</b>
	MISS YARDLEY B15	<b>CE 6.2</b>
Y1 WHIRL OF A DREAM	DREAM ON	<b>BW 3.8</b>
<b>MISS YARDLEY D128</b>	MISS YARDLEY B75	<b>WW 75.6</b>
MISS YARDLEY Z56	GCC HARD AS STEEL	<b>YW 115.3</b>
	MISS YARDLEY U81	<b>MK 17.5</b>
		<b>PAP 34</b>

H/P/S	WDA	TG	RIB FAT	REA	% IMF	DWR
<b>P</b>	<b>3.38</b>	<b>3.49</b>	<b>0.22</b>	<b>13.15</b>	<b>2.3</b>	<b>6@104</b>

L443 is the cattleman's kind of bull. He has the necessary power, impressive depth, added dimension, rugged bone and muscle mass to make impressive feeders and awesome replacements. His dam has done a tremendous job on making functional, power-packed offspring with an impressive 6@104 WW ratio. Her maternal brother was a crowd favorite of our '17 sale selling for \$8,500 to our good friend Otis Rinker of IL.

**87 YARDLEY LAD L328****5/8 SM 3/8 AN BD 2/27/2023 ASA 4242885**

		DATA
YARDLEY ABUNDANCE	W/C BANCHOR	<b>BW 84</b>
<b>YARDLEY SUBSTANCE</b>	MISS YARDLEY E232	<b>WW 680</b>
MISS YARDLEY G112	YARDLEY LAD E330	<b>YW 1290</b>
	MISS YARDLEY D98	<b>CE 12.2</b>
SSC SHELL SHOCKED	SECRET WEAPON	<b>BW 1.1</b>
<b>MISS YARDLEY H73</b>	SHEZ TOO COOL W58	<b>WW 73.5</b>
MISS YARDLEY E9	YARDLEY HIGH ROLLER	<b>YW 118.9</b>
	MISS YARDLEY C195	<b>MK 24.6</b>
		<b>PAP 48</b>

H/P/S	WDA	TG	RIB FAT	REA	% IMF	DWR
<b>P</b>	<b>3.35</b>	<b>3.81</b>	<b>0.21</b>	<b>13.88</b>	<b>3.07</b>	<b>2@102</b>

L328's sire Yardley Substance was our favorite son of Yardley Abundance and our pick of our '21 calf crop as a herd sire. *This bull is a little flighty.*

**88 YARDLEY LAD L260****1/2 SM 1/2 AN BD 1/24/2023 ASA 4242828**

		DATA
W/C BANCHOR	CCR ANCHOR	<b>BW 68</b>
<b>YARDLEY ABUNDANCE</b>	W/C MISS WERNING 46B	<b>WW 584</b>
MISS YARDLEY E232	BUSHWACKER O'REILLY	<b>YW 1155</b>
	MISS YARDLEY B141	<b>CE 15.8</b>
YARDLEY CHUNK	COLEMAN CHARLO	<b>BW -2.2</b>
<b>MISS YARDLEY J1</b>	MISS YARDLEY E49	<b>WW 74.4</b>
MISS YARDLEY G7	YARDLEY STANDOUT	<b>YW 123.9</b>
	MISS YARDLEY E155	<b>MK 30.4</b>
		<b>PAP 39</b>

H/P/S	WDA	TG	RIB FAT	REA	% IMF	DWR
<b>P</b>	<b>2.83</b>	<b>3.57</b>	<b>0.29</b>	<b>10.8</b>	<b>2.97</b>	<b>1@100</b>

With a mere 68# BW and ranking in the top 20% of the breed for CE and BW, L260 promises light BW calves come spring. A fancy maternal brother to his dam sold for \$8,500 in last year's sale!

**89 YARDLEY LAD L287****3/4 SM 1/4 AN BD 2/8/2023 ASA 4242853**

		DATA
DURACELL	DREAM ON	<b>BW 64</b>
<b>LOVER BOY</b>	HTP SVF HONEYDEW	<b>WW 598</b>
RIGHT TO LOVE 015U	BUILT RIGHT	<b>YW 1056</b>
	QUEENS VALENTINE R9	<b>CE 14.6</b>
YARDLEY STANDOUT	LOVER BOY	<b>BW -1.9</b>
<b>MISS YARDLEY J204</b>	MISS YARDLEY C136	<b>WW 69</b>
MISS YARDLEY E41	WS STEPPING STONE	<b>YW 100.4</b>
	MISS YARDLEY C205	<b>MK 25.9</b>
		<b>PAP 42</b>

H/P/S	WDA	TG	RIB FAT	REA	% IMF	DWR
<b>P</b>	<b>2.68</b>	<b>2.86</b>	<b>0.14</b>	<b>13.5</b>	<b>2.55</b>	<b>1@98</b>

L287 had featherlight BW of only 64# he ranks in the top 30% for CE and top 20% BW.





WC Bancher, the popular sire of L272



Smooth made maternal brother of L370



Well balanced maternal brother of L423's dam



Yardley Lady Luck, the \$14,500 paternal sister of L393

**90 YARDLEY LAD L272****5/8 SM 3/8 AN BD 2/2/2023 ASA 4242838**

CCR ANCHOR	CCR COWBOY CUT
<b>W/C BANCHOR</b>	CCR MS BARB 2120Z
W/C MISS WERNING 46B	REMINGTON LOCK N LOAD
	MISS WERNING 715T
STEEL FORCE	DREAM ON
<b>MISS YARDLEY J204</b>	SVF SHEZA BEAUTY L901
MISS YARDLEY E69	SAV RENOWN
	MISS YARDLEY U196

DATA	
<b>BW</b>	<b>63</b>
<b>WW</b>	<b>589</b>
<b>YW</b>	<b>1031</b>
<b>CE</b>	<b>15.2</b>
<b>BW</b>	<b>-2</b>
<b>WW</b>	<b>65.9</b>
<b>YW</b>	<b>92.3</b>
<b>MK</b>	<b>21.2</b>
<b>PAP</b>	<b>32</b>

H/P/S	WDA	TG	RIB FAT	REA	% IMF	DWR
<b>P</b>	<b>2.74</b>	<b>2.76</b>	<b>0.2</b>	<b>12.64</b>	<b>2.87</b>	<b>NA</b>

This stud had only a 63# BW and ranks in the top 25% for CE and top 20% BW.

**91 YARDLEY LAD L370****3/4 SM 3/16 AN 1/16 CS BD 3/7/2023 ASA 4242923**

PAYS TO BELIEVE	PAYS TO DREAM
<b>TJSC KING OF DIAMONDS</b>	URABABYDOLL U194
KLS DIAMOND W516	HTP SVF IN DEW TIME
	JJ BLACK OBSESSION
DUXS EXALT	CCR COWBOY CUT
<b>MISS YARDLEY H156</b>	BRITT
MISS YARDLEY E227	BUSHWACKER O'REILLY
	MISS YARDLEY Y116

DATA	
<b>BW</b>	<b>88</b>
<b>WW</b>	<b>635</b>
<b>YW</b>	<b>1015</b>
<b>CE</b>	<b>11.7</b>
<b>BW</b>	<b>2</b>
<b>WW</b>	<b>68.6</b>
<b>YW</b>	<b>106.2</b>
<b>MK</b>	<b>20.2</b>
<b>PAP</b>	<b>46</b>

H/P/S	WDA	TG	RIB FAT	REA	% IMF	DWR
<b>S</b>	<b>3.06</b>	<b>3.35</b>	<b>0.12</b>	<b>12.51</b>	<b>2.8</b>	<b>2@101</b>

I first saw L370's sire, King of Diamonds, at the Denver stock show where he was selected as the 2019 NWSS Reserve Simmental. I was impressed with him then; he has since become one of the most popular Simmental bulls at Genesource. He was also named 2019 NAILE Champion Simmental Bull. King of Diamonds is out of one of the most popular cow families in the business and his dam continues to create in demand progeny. *L370 is a little fighty.*

**92 YARDLEY LAD L423****3/4 SM 1/4 AN BD 3/20/2023 ASA 4242971**

SFI ACHIEVEMENT	PAYS TO BELIEVE
<b>YARDLEY ACCELERATE</b>	SFI MISS LACEY
MISS YARDLEY E88	YARDLEY HIGH REGARD
	MISS YARDLEY B15
YARDLEY LAD E330	YARDLEY TOP NOTCH
<b>MISS YARDLEY G112</b>	GCC DIXIE ERICA 159B
MISS YARDLEY D98	WS STEPPING STONE
	MISS YARDLEY U152

DATA	
<b>BW</b>	<b>88</b>
<b>WW</b>	<b>667</b>
<b>YW</b>	<b>1336</b>
<b>CE</b>	<b>9.2</b>
<b>BW</b>	<b>2.3</b>
<b>WW</b>	<b>81.2</b>
<b>YW</b>	<b>135.1</b>
<b>MK</b>	<b>24.4</b>
<b>PAP</b>	<b>43</b>

H/P/S	WDA	TG	RIB FAT	REA	% IMF	DWR
<b>P</b>	<b>3.56</b>	<b>4.18</b>	<b>0.25</b>	<b>14.39</b>	<b>3.48</b>	<b>3@103</b>

L423's stellar maternal grandam boasted an impressive 748# WW and produced our lot 1 bull, Yardley Charro, purchased by the Allen brother of North Powder OR. She was out of a cornerstone matriarch and donor dam, U152 who averaged over 735# on nine calves including a \$9,000 and a \$12,000 son.

**93 YARDLEY LAD L393****3/4 SM 1/4 AN BD 3/9/2023 ASA 4242942**

SO REMEDY 7F	UPRISING
<b>REMEDY 1054J</b>	B&K CREAM SODA 8D
WAGR MS LIGHTNING 8157F	WAGR LIGHTNING
	WAGR 3154A
BOONE PICKENS	REMINGTON LOCK N LOAD
<b>MISS YARDLEY H172</b>	TJSC KNOCKOUT 121Y
MISS YARDLEY D141	YARDLEY ROYAL JET
	MISS YARDLEY Z45

DATA	
<b>BW</b>	<b>92</b>
<b>WW</b>	<b>672</b>
<b>YW</b>	<b>1144</b>
<b>CE</b>	<b>8.3</b>
<b>BW</b>	<b>2.8</b>
<b>WW</b>	<b>65.2</b>
<b>YW</b>	<b>97.8</b>
<b>MK</b>	<b>19.4</b>
<b>PAP</b>	<b>NA</b>

H/P/S	WDA	TG	RIB FAT	REA	% IMF	DWR
<b>P</b>	<b>3.03</b>	<b>2.95</b>	<b>0.19</b>	<b>12.94</b>	<b>3.53</b>	<b>2@100</b>

L393's sire, Remedy 1054J produced our first three lead off show heifers in our Focus on the Female last November including \$14,500 Yardley Lady Luck.





D395, the \$14,000 maternal brother to the dam of L450

**94 YARDLEY LAD L450**

PB SM		BD 3/25/2023		ASA 4242992		DATA	
SFI ACHIEVEMENT	PAYS TO BELIEVE	PAYS TO DREAM				BW	68
		URABABYDOLL U194				WW	660
	SFI MISS LACEY	HOOKS SHEAR FORCE				YW	1206
		SFI MISS ALLEY Z12				CE	17.4
		REMINGTON LOCK N LOAD				BW	-2.5
MISS YARDLEY F170	W/C LOADED UP	AUBREYS BLACK BLAZE III				WW	66.7
		STEEL FORCE				YW	107.9
	GCC STEEL FORCE 199X	OCC MISS IMPACT 434R				MK	22.7
						PAP	41
H/P/S	WDA	TG	RIB FAT	REA	% IMF	DWR	
P	3.31	3.41	0.19	13.21	3.32	3@103	

This calving ease bull's maternal grandam was the mother of our herd sire, Yardley North Force and has produced seven of her own calves averaging a hefty 700# at weaning including a sale stopping, feature show heifer, \$16,500, Y1 Blitz purchased by Brent White of IA and a \$14,000 son purchased by Peter Mori of NV. L450 had a lofty 68# BW and ranks in the top 3% for CE, the top 4% BW, the top 15% MCE and CW and the top 25% REA.

**95 YARDLEY LAD L278**

3/4 SM 1/4 AN		BD 2/5/2023		ASA 4242844		DATA	
CCR ANCHOR		CCR COWBOY CUT		BW		65	
W/C BANCHOR		CCR MS BARB 2120Z		WW		602	
W/C MISS WERNING 46B		REMINGTON LOCK N LOAD		YW		1021	
		MISS WERNING 715T		CE		15.3	
SFI ACHIEVEMENT		PAYS TO BELIEVE		BW		-2.4	
MISS YARDLEY J176		SFI MISS LACEY		WW		67.4	
MISS YARDLEY Y134		OCC MISSING LINK		YW		96.7	
		MISS YARDLEY T72		MK		27	
				PAP		45	
H/P/S	WDA	TG	RIB FAT	REA	% IMF	DWR	
P	2.6	2.62	0.24	13.02	3.09	1@101	

L278 is backed by one of the best donor cows on the ranch, Miss Yardley Y134, his maternal grandam. She has a perfect phenotype with an ideal udder, abundant milk, fleshing ability, great feet, and a very attractive front. Y134 has a weaning weight ratio of 6@115. She was the dam of \$25,500 Yardley Man O War, selected by Ruel Barker of Elba, ID and \$10,000 Rapid River selected by Glenn Fessler of Madras OR, and the dam of our herd sire Top Gun. She also produced 5 of our top 20 bulls in '18.

**96 YARDLEY LAD L302**

PB SM		BD 2/14/2023		ASA 4242865		DATA	
HOT CHILI PEPPER	COUNTY O	W/C LOADED UP				BW	78
	SFI SHES A BOMB D7	RUBY NFF RHYTHM 475B				WW	610
		HIGH VOLTAGE				YW	1052
		SFI INFATUATION Y5				CE	12.7
	YARDLEY TOP NOTCH	SANDEEN UPPER CLASS				BW	0.1
MISS YARDLEY F118		HSF VICTORIA P30				WW	67.2
		SVF/HTP PRESSURE POINT				YW	93.3
	MISS YARDLEY X126	MISS YARDLEY S60				MK	19.3
						PAP	47
H/P/S	WDA	TG	RIB FAT	REA	% IMF	DWR	
P	2.88	2.76	0.27	13.3	2.97	4@96	

L302 was born and bred to be red. His stunning maternal grandam was the only red cow we have ever flushed. She averaged a whopping 685# WW on eleven head, including \$14,000 Yardley Excellence our high selling red bull of our '21 sale selected by our good friend Bill Carsten of Hotchkiss CO.



H398, the powerful maternal brother to the dam of L278



K437, the masculine maternal brother of L302

**EVEN THOUGH THERE ARE DAYS, I WISH I COULD CHANGE SOME THINGS THAT HAPPENED IN THE PAST, THERE'S A REASON THE REAR VIEW MIRROR IS SO SMALL AND THE WINDSHIELD IS SO BIG, WHERE YOU'RE HEADED IS MUCH MORE IMPORTANT THAN WHAT YOU'VE LEFT BEHIND.**





D338, the big ribbed maternal brother to the dam of L343

**97 YARDLEY LAD L343****5/8 SM 9/32 AN 3/32 MX BD 2/27/2023 ASA 4242899**

YARDLEY STANDOUT	LOVER BOY
<b>YARDLEY GRANDSTAND</b>	MISS YARDLEY C136
MISS YARDLEY F132	YARDLEY TOP NOTCH
	MISS YARDLEY C183
YARDLEY NORTH FORCE	NORTHERN OCTANE
<b>MISS YARDLEY G240</b>	GCC STEEL FORCE 199X
MISS YARDLEY Y173	GCF LONE STAR
	MISS YARDLEY U83

DATA	
<b>BW</b>	<b>84</b>
<b>WW</b>	<b>617</b>
<b>YW</b>	<b>1168</b>
<b>CE</b>	<b>11</b>
<b>BW</b>	<b>1</b>
<b>WW</b>	<b>60.2</b>
<b>YW</b>	<b>91.2</b>
<b>MK</b>	<b>24.6</b>
<b>PAP</b>	<b>41</b>

H/P/S	WDA	TG	RIB FAT	REA	% IMF	DWR
<b>S</b>	<b>3.09</b>	<b>3.44</b>	<b>0.25</b>	<b>14.73</b>	<b>3</b>	<b>3@103</b>

L343's dam and maternal grandam are both highly productive cows with excellent feet and udders his dam records a weaning record of 3@103; his maternal grandam 6@103 averaging over 700# including two \$6,500 sons.

**98 YARDLEY LAD L383****3/8 SM 5/8 AN BD 3/9/2023 ASA 4242933**

CCR ANCHOR	CCR COWBOY CUT
<b>W/C BANCHOR</b>	CCR MS BARB 2120Z
W/C MISS WERNING 46B	REMINGTON LOCK N LOAD
	MISS WERNING 715T
YARDLEY ROUNDUP	SAV RENOWN
<b>MISS YARDLEY G146</b>	MISS YARDLEY B42
MISS YARDLEY D143	S A V SYNERGY
	MISS YARDLEY Z183

DATA	
<b>BW</b>	<b>84</b>
<b>WW</b>	<b>635</b>
<b>YW</b>	<b>1155</b>
<b>CE</b>	<b>12.1</b>
<b>BW</b>	<b>-0.1</b>
<b>WW</b>	<b>74.7</b>
<b>YW</b>	<b>115.8</b>
<b>MK</b>	<b>25.6</b>
<b>PAP</b>	<b>45</b>

H/P/S	WDA	TG	RIB FAT	REA	% IMF	DWR
<b>P</b>	<b>3.09</b>	<b>3.25</b>	<b>0.2</b>	<b>12.58</b>	<b>3.02</b>	<b>3@103</b>

L383's profitable dam has a weaning ration of 3@103 averaging nearly 700#; her first two calves averaged \$6,750!

**99 YARDLEY LAD L262****5/8 SM 3/8 AN BD 1/29/2023 ASA 4242829**

LOVER BOY	DURACELL
<b>YARDLEY STANDOUT</b>	RIGHT TO LOVE 015U
MISS YARDLEY C136	YARDLEY HIGH REGARD
	MISS YARDLEY Y22
SAV 654X RAINMAKER 7133	COLEMAN CHARLO
<b>MISS YARDLEY J148</b>	SAV BLACKCAP MAY 5853
MISS YARDLEY A139	WLE RIGHT ON
	MISS YARDLEY W151

DATA	
<b>BW</b>	<b>62</b>
<b>WW</b>	<b>602</b>
<b>YW</b>	<b>1087</b>
<b>CE</b>	<b>14.6</b>
<b>BW</b>	<b>-2.1</b>
<b>WW</b>	<b>64.4</b>
<b>YW</b>	<b>93.7</b>
<b>MK</b>	<b>26.5</b>
<b>PAP</b>	<b>45</b>

H/P/S	WDA	TG	RIB FAT	REA	% IMF	DWR
<b>P</b>	<b>2.74</b>	<b>3.03</b>	<b>0.22</b>	<b>11.49</b>	<b>3.29</b>	<b>1@98</b>

His highly profitable and productive dam maintains one of our heaviest weaning averages with 6 calves averaging an incredible 726# adj WW! No creep, no nonsense just pure performance at its best! His maternal brother had the heaviest WW of any calf in our '19 crop with an 828# WW! He was selected by Kunzlers of Park Valley, UT for \$7,500.



Big topped maternal brother of L262's dam

*Make no mistake about it—you are a marked generation. There has never been more expected of the faithful in such a short period of time as there is of us... Each day we personally make many decisions that show where our support will go. The final outcome is certain—the forces of righteousness will finally win. What remains to be seen is where each of us personally, now and in the future, will stand in this fight—and how tall we will stand. - Ezra Taft Benson*





Impressive sire of L449



Square-made maternal brother to L428



Complete maternal brother to L407's dam



\$8,000 stout maternal brother to L344

**100 YARDLEY LAD L449**

5/8 SM 3/8 AN BD 3/25/2023 ASA 4242991

DATA	
BW	96
WW	615
YW	1161
CE	11.4
BW	0.8
WW	59.8
YW	90
MK	19.2
PAP	38

H/P/S	WDA	TG	RIB FAT	REA	% IMF	DWR
S	3.18	3.41	0.24	12.67	3.69	9@96

**101 YARDLEY LAD L428**

3/4 SM 1/4 AN BD 3/22/2023 ASA 4242974

DATA	
BW	82
WW	682
YW	1144
CE	13.9
BW	-1
WW	67.5
YW	99.7
MK	23.5
PAP	33

H/P/S	WDA	TG	RIB FAT	REA	% IMF	DWR
S	3.17	2.89	0.15	13.56	2.5	7@103

This is a stylish bull that would have taken a great picture. His impressive dam has done a tremendous job ratioing 6@102.5 WW average. Her previous two bulls have averaged over \$6,300.

**102 YARDLEY LAD L407**

1/2 SM 1/2 AN BD 3/13/2023 ASA 4242956

DATA	
BW	81
WW	643
YW	1122
CE	15.7
BW	-1.7
WW	62
YW	96.1
MK	23.7
PAP	31

H/P/S	WDA	TG	RIB FAT	REA	% IMF	DWR
S	3.08	2.99	0.35	12.41	4.59	9@103

L407 is out of an extremely productive and profitable dam who has an impeccable track record of 9@103 weaning ratio. A maternal brother to L407 was a \$6,750 favorite of our '18 sale selected by my dad's best friend Max Firth of Malad ID.

**103 YARDLEY LAD L334**

1/2 SM 1/2 AN BD 2/25/2023 ASA 4242890

DATA	
BW	82
WW	656
YW	1163
CE	11.7
BW	0.7
WW	72.6
YW	112.5
MK	20.5
PAP	37

H/P/S	WDA	TG	RIB FAT	REA	% IMF	DWR
P	3.17	3.17	0.23	13.78	3.07	8@101

L334 hails from one of our most proven, profitable, and productive cow families; his dam, A158, is a daughter of our cornerstone herd matron, S19 a donor of impeccable udder quality, femininity, performance; and the immortal OCC Eureka. A158 has been a no-miss momma; her five masculine bull calves have averaged over \$8,200!





\$13,000 maternal brother to J244

## 104 YARDLEY LAD L388

7/8 CS 1/8 AN BD 3/9/2023 ASA 4242936

GCC BREEDING	GCC BREEDING
<b>YARDLEY WIDE RANGE</b>	GCC BREEDING
GCC MISS STEEL249G	STEEL FORCE
	ETR GCC CLARA Y697
YARDLEY TOP NOTCH	SANDEEN UPPER CLASS
<b>MISS YARDLEY J244</b>	HSF VICTORIA P30
MISS YARDLEY C50	YARDLEY ASPEN
	MISS YARDLEY A95

DATA	
BW	85
WW	662
YW	1087
CE	10.9
BW	2.2
WW	65.2
YW	88.1
MK	23
PAP	34

H/P/S	WDA	TG	RIB FAT	REA	% IMF	DWR
P	2.83	2.66	0.23	11.8	2.97	1@102

A maternal brother to the dam of Yardley Winchester, our '21 high seller of \$13,000 to Skogen Livestock.

## 105 YARDLEY LAD L293

1/4 SM 5/8 AN 1/8 AR BD 2/12/2023 ASA 4242859

CONNEALY CAPITALIST	SAV FINAL ANSWER
<b>LD CAPITALIST 316</b>	PITA CONANGA 8821
LD DIXIE ERICA 2053	FUTURE DIRECTION
	LD DIXIE ERICA OAR 0853
YARDLEY STANDOUT	LOVER BOY
<b>MISS YARDLEY J217</b>	MISS YARDLEY C136
MISS YARDLEY C1	DETOUR 2W
	GCC DIXIE ERICA 351Z

DATA	
BW	84
WW	631
YW	1132
CE	12.9
BW	-0.2
WW	77.2
YW	120.1
MK	23.7
PAP	42

H/P/S	WDA	TG	RIB FAT	REA	% IMF	DWR
P	2.87	3.13	0.21	15.38	3.22	1@100

L293 is sired by the popular and proven AI sire Capitalist 316.

## 106 YARDLEY LAD L461

1/8 SM 7/8 AN BD 4/8/2023 ASA 4264837

COLEMAN CHARLO	OCC PAXTON
<b>YARDLEY CHARBROIL</b>	BOHI ABIGALE 6014
MISS YARDLEY D56	SAV INTERNATIONAL
	MISS YARDLEY X138
HF RANGER SMITH	HF KODIAK 5R
<b>MISS YARDLEY B27</b>	HF ANNIE 53R
MISS YARDLEY Z28	SAV MUSTANG
	MISS YARDLEY X155

DATA	
BW	78
WW	729
YW	1127
CE	14.8
BW	-1.3
WW	65.9
YW	103.1
MK	24.3
PAP	NA

H/P/S	WDA	TG	RIB FAT	REA	% IMF	DWR
P	3.15	2.49	NA	NA	NA	9@102

L461's dam is out of a maternal powerhouse and the mother to our herd sire Highlight, Yardley Top Gun an \$11,750 full brother to L461 was selected by Mike Larson of Ephraim UT, and another awesome herd sire prospect purchased by Rick Olsen for \$7,500.

## 107 YARDLEY LAD L431

3/8 SM 5/8 AN BD 3/18/2023 ASA 4242978

SAV CATALYST	SAV RESOURCE
<b>YARDLEY CATTLEMAN</b>	SAV EMBLYNETTE 0491
YARDLEY LAD G601	COLEMAN BRAVO
	MISS YARDLEY W172
YARDLEY STANDOUT	LOVER BOY
<b>MISS YARDLEY J93</b>	MISS YARDLEY C136
MISS YARDLEY D41	GCC NICKELS N DIMES
	MISS YARDLEY X76

DATA	
BW	80
WW	712
YW	1237
CE	14.4
BW	-0.4
WW	79.9
YW	129
MK	23.3
PAP	39

H/P/S	WDA	TG	RIB FAT	REA	% IMF	DWR
P	3.22	3.28	0.19	13.07	3.05	1@105

L431 has impressive performance with a hefty 698# WW out of a tremendous first calf heifer.



Infamous sire of L293



\$11,750 impressive maternal brother of L461



The strong topped maternal brother to J93





The performance packed sire of L284

**108 YARDLEY LAD L284**

PB SM		BD 2/10/2023	ASA 4242850	DATA		
LOVER BOY	DURACELL		DREAM ON	BW	80	
			HTP SVF HONEYDEW	WW	655	
			BUILT RIGHT	YW	1056	
	RIGHT TO LOVE 015U		QUEENS VALENTINE R9	CE	12.2	
	SOMETHING ABOUT MARY		W/C RELENTLESS	BW	0.4	
MISS YARDLEY J166			JBSF PROUD MARY	WW	71.8	
			YARDLEY TOP NOTCH	YW	97.1	
	MISS YARDLEY F164		MISS YARDLEY A80	MK	24	
				PAP	35	
H/P/S	WDA	TG	RIB FAT	REA	% IMF	DWR
P	2.73	2.51	0.15	12.87	3.37	1@101

L284 has an intriguing pedigree with Loverboy on the top and SAM on the bottom; two of the most influential, recognized and sought after bulls in the Simmental breed.

**109 YARDLEY LAD L422**

3/4 SM 1/4 AN		BD 3/20/2023		ASA 4242970		DATA	
SFI ACHIEVEMENT	PAYS TO BELIEVE	PAYS TO DREAM				BW	88
	SFI MISS LACEY	URABABYDOLL U194				WW	688
		HOOKS SHEAR FORCE				YW	1173
		SFI MISS ALLEY Z12				CE	13.4
MISS YARDLEY G159	LOVER BOY	DURACELL				BW	-0.4
	MISS YARDLEY B84	RIGHT TO LOVE 015U				WW	71.8
		YARDLEY BROCK				YW	106.8
		MISS YARDLEY Y163				MK	21.7
						PAP	33
H/P/S	WDA	TG	RIB FAT	REA	% IMF	DWR	
S	3.18	3.03	0.22	12.84	3.93	3@102	



Show stopping sire of L422

**110 YARDLEY LAD L457**

PB SM		BD 4/1/2023		ASA 4242999		DATA	
SFI ACHIEVEMENT	PAYS TO BELIEVE	PAYS TO DREAM		BW	82		
	SFI MISS LACEY	URABABYDOLL U194		WW	638		
		HOOKS SHEAR FORCE		YW	1114		
		SFI MISS ALLEY Z12		CE	14.8		
MISS YARDLEY D174	YARDLEY WAH WAH	GCF BILLY THE KID		BW	-1.4		
	MISS YARDLEY U81	MISS YARDLEY U154		WW	62.6		
		OCC JETFECK		YW	90.3		
		MISS YARDLEY P82		MK	23.9		
				PAP	39		
H/P/S	WDA	TG	RIB FAT	REA	% IMF	DWR	
P	3.08	2.97	0.16	13.41	2.39	5@104	



\$7,750 maternal brother of L457

L457's maternal line traces back to our grand herd Matriarch A144, the most famous and influential daughters of Whirlaway who produced three herd sires and several fancy daughters.

**111 YARDLEY LAD L325**

1/2 SM 1/2 AN		BD 2/27/2023	ASA 4242882	DATA	
HOT CHILI PEPPER	COUNTY O	W/C LOADED UP		BW	82
	SFI SHES A BOMB D7	RUBY NFF RHYTHM 475B		WW	637
		HIGH VOLTAGE		YW	1086
		SFI INFATUATION Y5		CE	10.1
MISS YARDLEY F69	BROOKING BANK NOTE	CONNEALY EARNAN		BW	1.4
	MISS YARDLEY S19	E A ROSE 918		WW	78.2
		LCC NEW STANDARD		YW	119.4
		MISS YARDLEY P197		MK	17.4
				PAP	38

H/P/S	WDA	TG	RIB FAT	REA	% IMF	DWR
P	2.99	2.8	0.19	12.83	2.84	10@100



Beautifully made dam of L325

L325's profitable donor dam has produced several tremendous individuals including: a beautiful daughter that was named the Tulsa State Fair Supreme Champion Simmental heifer, another stylish daughter, Yardley Fancy our leadoff, \$10,500 high selling show heifer of '18 purchased by Ronnie Smith of Denton, TX, a stylish \$7,500 maternal brother purchased by the renowned, Rick Calvo, of Bassett, NE, and a '22, \$10,000 son selected by Alan Kunzler of Park Valley UT.





Strong hipped maternal brother to L391

## 112 YARDLEY LAD L391

3/4 SM 1/4 AN BD 3/9/2023 ASA 4242940

TJ FROSTY	IRONHIDE
<b>TJ CHIEF</b>	TJ 58B
TJ 52A	TJ NEW TIME LINE
	T J MISS DAY R1
YARDLEY TOP NOTCH	SANDEEN UPPER CLASS
<b>MISS YARDLEY G194</b>	HSF VICTORIA P30
MISS YARDLEY D128	Y1 WHIRL OF A DREAM
	MISS YARDLEY Z56

DATA	
BW	91
WW	615
YW	966
CE	9.8
BW	1.6
WW	72.1
YW	101.5
MK	26
PAP	36

H/P/S	WDA	TG	RIB FAT	REA	% IMF	DWR
P	2.93	2.98	0.2	11.86	3.49	3@98

Another son of the popular AI sire, TJ Chief!

## 113 YARDLEY LAD L458

3/4 SM 3/16 AN 1/16 MX BD 4/1/2023 ASA 4243000

DURACELL	DREAM ON
<b>LOVER BOY</b>	HTP SVF HONEYDEW
RIGHT TO LOVE 015U	BUILT RIGHT
	QUEENS VALENTINE R9
GCF LONE STAR	B C LOOKOUT
<b>MISS YARDLEY Y141</b>	GCF MISS ISABELLA R120
MISS YARDLEY R65	HIDE N WATCH
	MISS YARDLEY M36

DATA	
BW	94
WW	686
YW	1179
CE	10.7
BW	2
WW	71.2
YW	103.5
MK	23.7
PAP	39

H/P/S	WDA	TG	RIB FAT	REA	% IMF	DWR
P	3.21	3.08	0.23	13.66	3.31	11@103

L458's dam is one of our heaviest milking herd matrons, she has a notable 10@103 weaning ratio.



\$8,500 maternal brother of L458's dam

## 114 YARDLEY LAD L464

3/4 SM 1/8 AN 1/8 CS BD 4/10/2023 ASA 4243006

DURACELL	DREAM ON
<b>LOVER BOY</b>	HTP SVF HONEYDEW
RIGHT TO LOVE 015U	BUILT RIGHT
	QUEENS VALENTINE R9
DUXS EXALT	CCR COWBOY CUT
<b>MISS YARDLEY G245</b>	BRITT
MISS YARDLEY D187	YARDLEY WAH WAH
	MISS YARDLEY Z156

DATA	
BW	96
WW	718
YW	1129
CE	8.9
BW	2.2
WW	77.6
YW	107.3
MK	22.4
PAP	34

H/P/S	WDA	TG	RIB FAT	REA	% IMF	DWR
P	3.11	2.57	0.22	12.94	2.93	3@105

L464 had a hefty 698# WW.



The outstanding sire of L464

## 115 YARDLEY LAD L273

1/2 SM 1/2 CS BD 2/3/2023 ASA 4242839

DURACELL	DREAM ON
<b>LOVER BOY</b>	HTP SVF HONEYDEW
RIGHT TO LOVE 015U	BUILT RIGHT
	QUEENS VALENTINE R9
WS REVIVAL	LLSF UPRISING
<b>MISS YARDLEY J83</b>	SS NOREEN
DUNK LUCY 351B	MR HOC BROKER
	DUNK LUCY

DATA	
BW	66
WW	591
YW	952
CE	14.4
BW	-0.9
WW	72.8
YW	103.7
MK	25.1
PAP	33

H/P/S	WDA	TG	RIB FAT	REA	% IMF	DWR
P	2.45	2.25	0.16	13.25	2.32	1@101

L273's dam is a beautiful flush mate to one of the most decorated females in the Simmental Breed, Lucy 720E the 2019 NWSS National Champion Foundation Simmental Female, 2018 American Royal Reserve Grand Foundational Simmental Female, the 2018 Grand Champion in the 2018 NAILE. They are out of renowned Dunk Lucy 351B.



Full sister to L273's dam



**AMERICA THE BEAUTIFUL  
LAND OF THE FREE AND THE HOME OF THE BRAVE**

My dad's oldest brother was James Gilbert Yardley, Uncle Gib. My dad thought he was the greatest men that ever lived, and I was named after him. He died in the first World War in France in 1918 defending freedom. This is the price our family has paid for FREEDOM.

We are enthusiastic boosters of America. We are super patriotic and feel great pride when "old Glory" is raised. We strongly believe in those principles upon which this great nation was founded; Christian religious principles, hard work, freedom to excel, honesty, integrity, decency and high morals, private property rights, free enterprise, traditional marriage and family values.

I hope all of you appreciate what a great blessing we have all had to be born and raised in America. We strongly believe that this is a land, choice above all other lands. We also believe that God inspired Columbus, the pilgrims and other early settlers to come here for religious liberty. These courageous people wanted to be free and not have to live under a king that wouldn't let them make their own decisions

They were very brave, courageous people who wanted to live in a free country. God inspired them to write the Declaration of Independence and the Constitution. Those delegates could not agree on what to write until they prayed about it and God inspired them to write these sacred documents, which are the greatest documents on government ever written in the world to grant FREEDOM to the citizens of this great land.

These brave men pledged "THEIR LIVES, THEIR FORTUNES, and THEIR SACRED HONOR" to establish this great country. From then on, this nation has grown and prospered because men were FREE to make their own choices and decisions. THEY COULD OWN THEIR OWN PROPERTY, WHICH IS THE MOST BASIC RIGHT OF A FREE PEOPLE. They established the free-market enterprise system. This encourages people to start their own business with the incentive to make a profit and get ahead in life while making a living for their families.



Quote from letter of James Gilbert Yardley

"Somewhere in France      March 29, 1918

Dear Parents,

There are some things on earth worse than death and one of them is backing down when the other boys are giving their time and perhaps their lives for their country.

Life to me is dear. I have a lot to be thankful for but I always want to be able to say that I did my part.

Generations to come may not know of the soldiers who are fighting for liberty and peace but TIME WILL NEVER ERASE THE BIG THING (FREEDOM) THAT THESE SOLDIERS WILL BRING TO THE WORLD"







## 116 YARDLEY GAME DAY L424

3/4 MA

BD 3/20/2023

AMAA 541949

BOE GARTH

BKMT GAME ON

BK JFR ZANELLA 227

REBEL SOUL

MISS YARDLEY B186

MISS YARDLEY X156

HARD WHISKEY

BOE MISS JOLENE

HAA WISDOM 505S

DCC PLAYMATE 267K

BPF CLASSIC

MISS CARNEY 88U

BKRI TRENDSETTER

MISS YARDLEY T163

DATA

BW 96

WW 587

YW 1109

CE 5

BW 1.3

WW 58

YW 81

MK 13

PAP 49

H/P/S

WDA

TG

RIB FAT

REA

% IMF

DWR

P

3.03

3.26

0.11

12.55

2.58

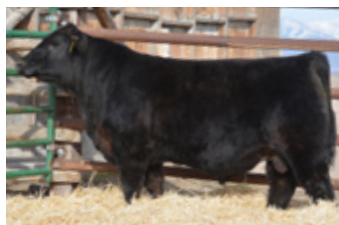
7@94

If you're looking for a zipper fronted, big butted, cool haired Maine then check out Game Day! His dam is one of the prettiest Maines we have ever raised or encountered. She produced \$7,200 Yardley Masterpiece, the lead off bull from his pen, a phenomenal sale day favorite selected by Mike Probst of MT. His sire, Game On, is big boned and stout made, just the kind to use on a variety of cows to make an awesome set of females and bulls that have plenty of punch, muscle, and dimension. *This bull is a little flighty.*

***"Do all the good you can, By all the means you can  
In all the ways you can, In all the places you can  
At all the times you can, To all the people you can  
As long as ever you can." – John Wesley***



Standout sire of Game Day



\$7,200 maternal brother of Game Day



\$7,750 maternal brother of Game Day's dam





# REQUEST

## 117 YARDLEY REQUEST L322

1/2 SM 1/2 AN BD 2/18/2023 ASA 4242879

SO REMEDY 7F  
**REMEDY 1054J**  
 WAGR MS LIGHTNING 8157F  
 DUFF ANGUS 011  
**MISS YARDLEY C7**  
 MISS YARDELY A178

UPRISING  
 B&K CREAM SODA 8D  
 WAGR LIGHTNING  
 WAGR 3154A  
 DUFF NEW EDITION  
 FCC ROSETTA 745R  
 SOO LINE KODIAK  
 MISS YARDLEY W44

DATA	
BW	76
WW	561
YW	1126
CE	13.1
BW	0
WW	61.6
YW	98.7
MK	19.5
PAP	37

H/P/S	WDA	TG	RIB FAT	REA	% IMF	DWR
P	2.98	3.53	0.22	11.2	4.48	7@101

Request is the epitome of what has made quality SimAngus so popular. He has extreme depth of body, a stout hip, a calm disposition and promises to make many easy keeping daughters. His dam is a beautiful, broody made, front pasture female.

**You are not a random human being living in an unorganized universe. You're being led by Heaven. You're here to help others find Christ & be changed by Him. You have an important role in God's loving plan. You're not meeting people by accident, you cross paths for a reason.**  
**- Hank Smith**



Mouthwatering dam of Request



Fancy sire of Request





L342



\$6,000 maternal brother of H206

**118 YARDLEY LAD L342**

1/2 SM 1/2 AN BD 2/27/2023 ASA 4242898

SO REMEDY 7F	UPRISING
<b>REMEDY 1054J</b>	B&K CREAM SODA 8D
WAGR MS LIGHTNING 8157F	WAGR LIGHTNING
	WAGR 3154A
SAV 654X RAINMAKER 7133	COLEMAN CHARLO
<b>MISS YARDLEY H206</b>	SAV BLACKCAP MAY 5853
MISS YARDLEY D176	KOUPALS B&B TITAN
	DIXIE ERICA 1153

DATA	
<b>BW</b>	<b>100</b>
<b>WW</b>	<b>591</b>
<b>YW</b>	<b>1161</b>
<b>CE</b>	<b>6.9</b>
<b>BW</b>	<b>3.5</b>
<b>WW</b>	<b>68.7</b>
<b>YW</b>	<b>108</b>
<b>MK</b>	<b>20.3</b>
<b>PAP</b>	<b>40</b>

H/P/S	WDA	TG	RIB FAT	REA	% IMF	DWR
<b>P</b>	<b>2.99</b>	<b>3.57</b>	<b>0.18</b>	<b>12.61</b>	<b>3.64</b>	<b>2@100</b>

Guardian dominates the ground he walks on and has the look of a true masculine breed piece. We have been super pleased with our SimAngus. They consistently are mouthwatering females and eye-catching bulls. Guardian's sire, Remedy produced our three leadoff show heifer's in our Focus on the Female sale.

**119 YARDLEY LAD L264**

3/4 SM 1/4 AN BD 1/30/2023 ASA 4242831

DURACELL	DREAM ON
<b>LOVER BOY</b>	HTP SVF HONEYDEW
RIGHT TO LOVE 015U	BUILT RIGHT
	QUEENS VALENTINE R9
YARDLEY HILIGHT	YARDLEY HIGH REGARD
<b>MISS YARDLEY J104</b>	MISS YARDLEY Z28
MISS YARDLEY D153	YARDLEY MAN OF WAR
	MISS YARDLEY A50

DATA	
<b>BW</b>	<b>62</b>
<b>WW</b>	<b>581</b>
<b>YW</b>	<b>1101</b>
<b>CE</b>	<b>14.3</b>
<b>BW</b>	<b>-2.2</b>
<b>WW</b>	<b>68</b>
<b>YW</b>	<b>103</b>
<b>MK</b>	<b>26.1</b>
<b>PAP</b>	<b>36</b>

H/P/S	WDA	TG	RIB FAT	REA	% IMF	DWR
<b>P</b>	<b>2.74</b>	<b>3.25</b>	<b>0.14</b>	<b>11.28</b>	<b>2.85</b>	<b>1@96</b>

You'll love the style and finesse of this impressive bull. His dam's fancy maternal brother was an \$8,500 sale favorite selected by our good friend Joe Fuhrman of Logan UT. His maternal line traces back to F44 who effectively weaned sixteen calves and was the grandam of our herd sire Chrome.



Long spined maternal brother of L264's dam



\$9,000 maternal brother of L264's dam



L264





L271



\$5,750 maternal brother of L271's dam

**120 YARDLEY LAD L271**

3/4 SM 1/4 AN BD 2/4/2023 ASA 4242837

PAYS TO BELIEVE	PAYS TO DREAM
<b>SFI ACHIEVEMENT</b>	URABABYDOLL U194
SFI MISS LACEY	HOOKS SHEAR FORCE
	SFI MISS ALLEY Z12
YARDLEY STANDOUT	LOVER BOY
<b>MISS YARDLEY J243</b>	MISS YARDLEY C136
MISS YARDLEY E24	OCC JET STREAM
	MISS YARDLEY C149

DATA	
BW	75
WW	610
YW	1011
CE	14.8
BW	-0.8
WW	68.8
YW	102.6
MK	24.1
PAP	35

H/P/S	WDA	TG	RIB FAT	REA	% IMF	DWR
P	2.58	2.5	0.16	13.2	2.35	1@102

You'll love this deep bodied, belly dragging dude! He's got an exceptionally light birth weight. He ranks in the top 25% of the breed for CE, top 35% for BW, and top 20% for RE. His tremendous maternal dam has been a top-of-the-line producer with five impeccable offspring averaging 715# including a \$5,750 stud to our good friends David and Kade Brown of Central Valley UT.

**121 YARDLEY LAD L445**

3/8 SM 7/16 AN 3/16 MA BD 3/22/2023 ASA 4242987

CCR ANCHOR	CCR COWBOY CUT
<b>W/C BANCHOR</b>	CCR MS BARB 2120Z
W/C MISS WERNING 46B	REMINGTON LOCK N LOAD
	MISS WERNING 715T
LIBERTY	SP DELIVERY
<b>MISS YARDLEY Z140</b>	MISS GREEN VALLEY 7007T
MISS YARDLEY P199	GCC WHIZARD
	OCCJ440

DATA	
BW	98
WW	619
YW	1148
CE	10
BW	1.8
WW	65.2
YW	98.7
MK	20.4
PAP	42

H/P/S	WDA	TG	RIB FAT	REA	% IMF	DWR
S	3.09	3.3	0.23	12.72	2.74	9@96

L445 has all the style and design to make a set of fancy females that will meet the mark and accomplish the designs of the most demanding cattlemen. He has a stout rear end, a topline that is impressive and wide, an ideal leg set, and a big foot. His maternal grandam is our proven herd matriarch and donor P199, who was also the grandam of our \$9,000 '22 lead off feature, Yardley Infinity.



Cornerstone donor and maternal grandam of L445



Eye appealing dam of L445



L445





The strong topped sire of L435

**122 YARDLEY LAD L435**

5/8 CS 3/8 AN BD 3/22/2023 ASA 4242980

GCC BREEDING		GCC BREEDING		DATA	
<b>YARDLEY WIDE RANGE</b>		GCC BREEDING		<b>BW</b>	<b>76</b>
GCC MISS STEEL249G		STEEL FORCE		<b>WW</b>	<b>621</b>
YARDLEY ABUNDANCE		ETR GCC CLARA Y697		<b>YW</b>	<b>1127</b>
<b>MISS YARDLEY J3</b>		W/C BANCHOR		<b>CE</b>	<b>12.9</b>
MISS YARDLEY G604		MISS YARDLEY E232		<b>BW</b>	<b>0.4</b>
		WS STEPPING STONE		<b>WW</b>	<b>68</b>
		MISS YARDLEY S19		<b>YW</b>	<b>111.6</b>
				<b>MK</b>	<b>22.5</b>
				<b>PAP</b>	<b>38</b>

H/P/S	WDA	TG	RIB FAT	REA	% IMF	DWR
P	2.91	3.16	0.24	13.19	3.27	1@99

L435 is one cool cat! Check out his fancy front end, perfect hair, massive hip, and style throughout. His dam is a beautiful young cow that was exhibited by James as a heifer. Her dam in turn is an own daughter of cornerstone donor S19 who has produced several high sellers and productive daughters of her own. She traces her maternal line back to foundational Angus Matriarch C72.

**123 YARDLEY LAD L281**

PB SM BD 2/7/2023 ASA 4242847

DURACELL		DREAM ON		DATA	
<b>LOVER BOY</b>		HTP SVF HONEYDEW		<b>BW</b>	<b>75</b>
RIGHT TO LOVE 015U		BUILT RIGHT		<b>WW</b>	<b>573</b>
YARDLEY TOP NOTCH		QUEENS VALENTINE R9		<b>YW</b>	<b>1076</b>
<b>MISS YARDLEY J191</b>		SANDEEN UPPER CLASS		<b>CE</b>	<b>12.9</b>
MISS YARDLEY B105		HSF VICTORIA P30		<b>BW</b>	<b>-0.1</b>
		GCF BILLY THE KID		<b>WW</b>	<b>71.2</b>
		MISS YARDLEY T169		<b>YW</b>	<b>99.3</b>
				<b>MK</b>	<b>23.7</b>
				<b>PAP</b>	<b>37</b>

H/P/S	WDA	TG	RIB FAT	REA	% IMF	DWR
P	2.68	3.14	0.16	12.25	2.18	1@92

Here's your chance at a fancy red with some chrome to add to it; check out that hip and topline! With a mere 75# BW, smooth shoulder and ranking in the top 35% for CE and the top 25% for BW he should do a great job on a set of heifers. A handsome \$7,500 maternal brother to L281's dam was selected by Scott Miller of Manti UT.



\$7,500 maternal brother to the dam of L281

**124 YARDLEY LAD L327**

3/4 SM 1/4 AN BD 2/27/2023 ASA 4242884

MR TR HAMMER		UPGRADE		DATA	
<b>KCC1 EXCLUSIVE</b>		EXPECTING A DREAM		<b>BW</b>	<b>62</b>
TKCC VICTORIA 57A		ENTOURAGE		<b>WW</b>	<b>515</b>
YARDLEY HIGH REGARD		FORD RJ DOLLY Y83		<b>YW</b>	<b>1015</b>
<b>MISS YARDLEY C136</b>		YARDLEY IMPRESSIVE		<b>CE</b>	<b>15.8</b>
MISS YARDLEY Y22		MISS YARDLEY T68		<b>BW</b>	<b>-2.3</b>
		SAV FINAL ANSWER		<b>WW</b>	<b>58.3</b>
		MISS YARDLEY W146		<b>YW</b>	<b>88</b>
				<b>MK</b>	<b>12.4</b>
				<b>PAP</b>	<b>44</b>

H/P/S	WDA	TG	RIB FAT	REA	% IMF	DWR
S	2.71	3.13	0.25	13.59	2.73	9@98

L327 is a maternal brother to our herd sire Yardley Standout. Their dam is a feminine fronted, deep bodied, easy fleshing and ideal uddered. She is the best High Regard daughter we have had to date. She entered the donor pen at an early age to join her beautifully designed, broody made donor dam, Y22. Consistency is coming from both sides of the pedigree here.



\$8,500 stylish maternal brother to L327





Ideally designed great maternal grandam of L288

**125 YARDLEY LAD L288****5/8 SM 3/8 AN BD 2/8/2023 ASA 4242854**

							DATA	
CCR ANCHOR							BW	85
<b>W/C BANCHOR</b>							WW	644
W/C MISS WERNING 46B							YW	1248
COLEMAN CHARLO							CE	15
<b>MISS YARDLEY J17</b>							BW	0.4
MISS YARDLEY G609							WW	78.1
CCR COWBOY CUT							YW	119.5
CCR MS BARB 2120Z							MK	26
REMINGTON LOCK N LOAD							PAP	40
MISS WERNING 715T								
OCC PAXTON								
BOHI ABIGALE 6014								
LOVER BOY								
MISS YARDLEY T68								
H/P/S	WDA	TG	RIB FAT	REA	% IMF	DWR		
S	3.15	3.65	0.15	13.79	3.08	1@102		

L288's maternal grandam is a maternal sister to renowned Yardley High Regard!

**126 YARDLEY LAD L414****5/8 SM 7/32 MA 1/8 AN BD 3/17/2023 ASA 4242962**

							DATA	
PAYS TO BELIEVE							BW	90
<b>SFI ACHIEVEMENT</b>							WW	613
SFI MISS LACEY							YW	1189
GCF BILLY THE KID							CE	13.8
<b>MISS YARDLEY B112</b>							BW	0.4
MISS YARDLEY S2							WW	62.8
PAYS TO DREAM							YW	96.3
URABABYDOLL U194							MK	17.4
HOOKS SHEAR FORCE							PAP	32
SFI MISS ALLEY Z12								
MCC CUPID 414								
GCF MISS REFLECTION S3								
BOUNCER								
MISS YARDLEY P179								
H/P/S	WDA	TG	RIB FAT	REA	% IMF	DWR		
P	3.21	3.6	0.23	12.85	3.46	7@99		

L414's maternal brother was a \$6,750 favorite of our good friend and customer Chris Davis of Downey ID.



\$6,750 is the maternal brother of L414

**127 YARDLEY LAD L361****3/8 SM 5/8 AN BD 3/3/2023 ASA 4242916**

							DATA	
GCC TOTAL RECALL							BW	80
<b>GCC GOLD STANDARD</b>							WW	608
OCC JUANADA 925R							YW	1193
YARDLEY TOP NOTCH							CE	15.8
<b>MISS YARDLEY J210</b>							BW	-0.4
MISS YARDLEY A78							WW	59.3
OCC MISSING LINK							YW	86.5
OCC JUANADA 741K							MK	19.8
OCC NITRO							PAP	40
OCCJUANADA 862M								
SANDEEN UPPER CLASS								
HSF VICTORIA P30								
YARDLEY ZION								
MISS YARDLEY U195								
H/P/S	WDA	TG	RIB FAT	REA	% IMF	DWR		
P	3.01	3.66	0.3	13.03	3.32	2@108		

Gold Standard's calves come nice and easy, and they have the look and design of big bodied, easy doing females. Some of his offspring have sold for as high as \$25,000.



Performance driven sire of L361

**128 YARDLEY LAD L462****1/2 SM 1/2 AN BD 4/8/2023 ASA 4243004**

							DATA	
TJ FROSTY							BW	72
<b>TJ CHIEF</b>							WW	666
TJ 52A							YW	1080
YARDLEY CHALLENGER							CE	11.1
<b>MISS YARDLEY H181</b>							BW	-0.8
MISS YARDLEY F163							WW	68.5
IRONHIDE							YW	98.4
TJ 58B							MK	31.2
TJ NEW TIME LINE							PAP	34
T J MISS DAY R1								
SAV CATALYST								
MISS YARDLEY D88								
YARDLEY TOP NOTCH								
MISS YARDLEY X73								
H/P/S	WDA	TG	RIB FAT	REA	% IMF	DWR		
P	2.89	2.59	0.23	12.11	2.78	2@101		

Another son of the popular sire TJ Chief.



Power packed sire of L462.





Cornerstone maternal grandam of L305

**129 YARDLEY LAD L305**

5/8 SM 3/8 AN BD 2/21/2023 ASA 4242868

W/C BANCHOR	CCR ANCHOR
<b>YARDLEY ABUNDANCE</b>	W/C MISS WERNING 46B
MISS YARDLEY E232	BUSHWACKER O'REILLY
	MISS YARDLEY B141
YARDLEY STANDOUT	LOVER BOY
<b>MISS YARDLEY J70</b>	MISS YARDLEY C136
GCC DIXIE ERICA 127B	YARDLEY SHOWDOWN
	OCCDIXIE ERICA 730R

DATA	
BW	40
WW	563
YW	1036
CE	18.2
BW	-5.4
WW	58.5
YW	93.5
MK	27.2
PAP	37

H/P/S	WDA	TG	RIB FAT	REA	% IMF	DWR
P	2.62	2.96	0.36	11.76	4	NA

L305's maternal grandam is a feminine made masterpiece from the GCC herd. Her past two bull calves have averaged \$6,500.

**130 YARDLEY LAD L304**

3/4 SM 1/4 AN BD 2/20/2023 ASA 4242867

DURACELL	DREAM ON
<b>LOVER BOY</b>	HTP SVF HONEYDEW
RIGHT TO LOVE 015U	BUILT RIGHT
	QUEENS VALENTINE R9
YARDLEY ABUNDANCE	W/C BANCHOR
<b>MISS YARDLEY J36</b>	MISS YARDLEY E232
MISS YARDLEY G38	YARDLEY STANDOUT
	MISS YARDLEY E82

DATA	
BW	76
WW	591
YW	1155
CE	13
BW	0
WW	74.9
YW	117
MK	26.9
PAP	NA

H/P/S	WDA	TG	RIB FAT	REA	% IMF	DWR
P	2.9	3.52	0.21	13.65	3.26	1@97

Another sought after Loverboy son!

**131 YARDLEY LAD L418**

PB SM BD 3/18/2023 ASA 4242965

YARDLEY STANDOUT	LOVER BOY
<b>YARDLEY GRANDSTAND</b>	MISS YARDLEY C136
MISS YARDLEY F132	YARDLEY TOP NOTCH
	MISS YARDLEY C183
LOVER BOY	DURACELL
<b>MISS YARDLEY E101</b>	RIGHT TO LOVE 015U
MISS YARDLEY R71	3C PICASSO
	MISS YARDLEY M35

DATA	
BW	80
WW	608
YW	1079
CE	11.9
BW	-0.3
WW	62.8
YW	91.6
MK	22.6
PAP	43

H/P/S	WDA	TG	RIB FAT	REA	% IMF	DWR
P	2.97	2.94	0.23	13.67	2.96	5@93

L418's maternal grandam, R71 became the oldest cow on our ranch at 16 years old. She was an own daughter of Picasso, one of the most popular Meyer 734 sons. She was a phenomenal producer of quality. Her past three bull caves have averaged an impressive \$6,800 including Yardley Bald Eagle a \$7,250 highlight of our '15 sale.

**132 YARDLEY LAD L434**

5/8 CS 3/8 AN BD 3/27/2023 ASA 4242979

GCC BREEDING	GCC BREEDING
<b>YARDLEY WIDE RANGE</b>	GCC BREEDING
GCC MISS STEEL249G	STEEL FORCE
	ETR GCC CLARA Y697
YARDLEY TOP GUN	YARDLEY TOP NOTCH
<b>MISS YARDLEY J217</b>	MISS YARDLEY Y134
MISS YARDLEY F178	ZEIS REAL STEEL
	R597

DATA	
BW	83
WW	648
YW	1137
CE	10.4
BW	1.9
WW	68.9
YW	100.3
MK	23.6
PAP	41

H/P/S	WDA	TG	RIB FAT	REA	% IMF	DWR
P	2.98	2.83	0.26	12.97	3.21	1@104

Wide Range, L434's sire is a striking epitome of power and masculinity. We kept him as a herd sire and he's out of a beautiful GCC cow we purchased in the Classic sale. Unfortunately, we never could trace down his sire, but we he's out of a GCC bull.



Calving ease wonder and sire of L304



\$7,250 maternal brother of L418's dam



Wide based sire of L434





Strong hipped sire of L285

**133 YARDLEY LAD L285**

5/8 SM 3/8 AN BD 2/7/2023 ASA 4242851

LOVER BOY	DURACELL
<b>YARDLEY STANDOUT</b>	RIGHT TO LOVE 015U
MISS YARDLEY C136	YARDLEY HIGH REGARD
YARDLEY ABUNDANCE	MISS YARDLEY Y22
<b>MISS YARDLEY J41</b>	W/C BANCHOR
MISS YARDLEY G224	MISS YARDLEY E232
	GCC NICKELS N DIMES
	MISS YARDLEY D88

DATA	
<b>BW</b>	<b>73</b>
<b>WW</b>	<b>583</b>
<b>YW</b>	<b>1008</b>
<b>CE</b>	<b>13.5</b>
<b>BW</b>	<b>-0.6</b>
<b>WW</b>	<b>70.3</b>
<b>YW</b>	<b>105</b>
<b>MK</b>	<b>26</b>
<b>PAP</b>	<b>37</b>

H/P/S	WDA	TG	RIB FAT	REA	% IMF	DWR
<b>P</b>	<b>2.55</b>	<b>2.66</b>	<b>0.16</b>	<b>11.67</b>	<b>2.21</b>	<b>1@100</b>

**134 YARDLEY LAD L441**

3/4 SM 1/4 AN BD 3/22/2023 ASA 4242983

SO REMEDY 7F	UPRISING
<b>REMEDY 1054J</b>	B&K CREAM SODA 8D
WAGR MS LIGHTNING 8157F	WAGR LIGHTNING
BOONE PICKENS	WAGR 3154A
<b>MISS YARDLEY H170</b>	REMINGTON LOCK N LOAD
MISS YARDLEY A220	TJSC KNOCKOUT 121Y
	HF RANGER SMITH
	MISS YARDLEY W93

DATA	
<b>BW</b>	<b>88</b>
<b>WW</b>	<b>643</b>
<b>YW</b>	<b>1079</b>
<b>CE</b>	<b>9.2</b>
<b>BW</b>	<b>2</b>
<b>WW</b>	<b>59.6</b>
<b>YW</b>	<b>89.8</b>
<b>MK</b>	<b>20.3</b>
<b>PAP</b>	<b>38</b>

H/P/S	WDA	TG	RIB FAT	REA	% IMF	DWR
<b>P</b>	<b>2.87</b>	<b>2.72</b>	<b>0.12</b>	<b>12.95</b>	<b>1.83</b>	<b>2@100</b>

A fancy maternal brother to L441 was sold in last year's sale for \$8,000.



Deep bodied maternal brother of L441

**135 YARDLEY LAD L469**

5/8 SM 3/8 AN BD 4/21/2023 ASA 4243010

CCR ANCHOR	CCR COWBOY CUT
<b>W/C BANCHOR</b>	CCR MS BARB 2120Z
W/C MISS WERNING 46B	REMINGTON LOCK N LOAD
YARDLEY STANDOUT	MISS WERNING 715T
<b>MISS YARDLEY G43</b>	LOVER BOY
MISS YARDLEY E238	MISS YARDLEY C136
	YARDLEY ENSIGN
	MISS YARDLEY Z140

DATA	
<b>BW</b>	<b>85</b>
<b>WW</b>	<b>677</b>
<b>YW</b>	<b>1174</b>
<b>CE</b>	<b>13.3</b>
<b>BW</b>	<b>-1</b>
<b>WW</b>	<b>69.7</b>
<b>YW</b>	<b>100.4</b>
<b>MK</b>	<b>23.5</b>
<b>PAP</b>	<b>37</b>

H/P/S	WDA	TG	RIB FAT	REA	% IMF	DWR
<b>P</b>	<b>3.22</b>	<b>3.11</b>	<b>0.18</b>	<b>12.86</b>	<b>2.3</b>	<b>3@106</b>

L469's dam has averaged a remarkable 708# adj. WW on two calves!



Strong topped maternal brother of L469

**136 YARDLEY LAD L376**

PB SM BD 3/7/2023 ASA 4242927

MR TR HAMMER	UPGRADE
<b>KCC1 EXCLUSIVE</b>	EXPECTING A DREAM
TKCC VICTORIA 57A	ENTOURAGE
DURACELL	FORD RJ DOLLY Y83
<b>MISS YARDLEY Y147</b>	DREAM ON
MISS YARDLEY U187	HTP SVF HONEYDEW
	OCC JETFECK
	MISS YARDLEY M41

DATA	
<b>BW</b>	<b>85</b>
<b>WW</b>	<b>569</b>
<b>YW</b>	<b>1010</b>
<b>CE</b>	<b>13.3</b>
<b>BW</b>	<b>-0.2</b>
<b>WW</b>	<b>60.6</b>
<b>YW</b>	<b>84.6</b>
<b>MK</b>	<b>14.1</b>
<b>PAP</b>	<b>33</b>

H/P/S	WDA	TG	RIB FAT	REA	% IMF	DWR
<b>P</b>	<b>2.7</b>	<b>2.75</b>	<b>0.19</b>	<b>12.08</b>	<b>2.88</b>	<b>10@100</b>

This bull's maternal grandam is a massive made feminine powerhouse with a proven track record; 10 superior calves have a stellar ratio of 104 and her sons have averaged 700# adj WW. Included in this is Yardley Black Gold who sold for a total valuation of \$16,000 to longtime customer and friend Alan Kunzler of Grouse Creek UT.



Profficient maternal brother of L376's dam





OHL Hard Facts, stylish sire of L380

**137 YARDLEY LAD L380**

PB SM		BD 3/8/2023		ASA 4242931		DATA	
W/C PASSWORD		YARDLEY UTAH		BW		80	
OHL HARD FACTS		MISS WERNING KP 8543U		WW		618	
		KRIZ/SVF MILE HIGH		YW		1069	
NF MS DELTA DAWN D6		NF BARBIE S6		CE		14.3	
YARDLEY STANDOUT		LOVER BOY		BW		1.2	
MISS YARDLEY J34		MISS YARDLEY C136		WW		63.4	
		W/C RELENTLESS		YW		88.5	
		MISS YARDLEY G156		MK		18.5	
		CHEZ STCC MILEY 5034C		PAP		39	
H/P/S	WDA	TG	RIB FAT	REA	% IMF	DWR	
P	2.76	2.82	0.21	12.15	3.56	12@101	

L380's dam boasts an impressive WW ratio of 10@101.

**138 YARDLEY LAD L474**

5/8 SM 1/4 AN 1/8 MA			BD 4/26/2023		ASA 4243015		DATA	
CCR ANCHOR			CCR COWBOY CUT				BW	79
W/C BANCHOR			CCR MS BARB 2120Z				WW	722
			REMINGTON LOCK N LOAD				YW	1125
W/C MISS WERNING 46B			MISS WERNING 715T				CE	13
YARDLEY HIGH REGARD			YARDLEY IMPRESSIVE				BW	-1.2
MISS YARDLEY Y72			MISS YARDLEY T68				WW	61.2
			NEW LEVEL				YW	87.9
MISS YARDLEY U9			MISS YARDLEY S129				MK	23.2
							PAP	32
H/P/S	WDA	TG	RIB FAT	REA	% IMF	DWR		
P	3.09	2.52	0.21	12.31	3.47	9@100		

A stylish maternal brother to L474 was selected by Navaro Cattle of Montrose CO for \$7,000 in our '22 sale.



Performance driven maternal brother of L474

**139 YARDLEY LAD L366**

PB SM		BD 3/1/2023		ASA 4242919		DATA	
LOVER BOY	DURACELL		DREAM ON			BW	80
			HTP SVF HONEYDEW			WW	600
	RIGHT TO LOVE 015U		BUILT RIGHT			YW	930
			QUEENS VALENTINE R9			CE	11.7
	W/C BANCHOR		CCR ANCHOR			BW	0.3
MISS YARDLEY J69			W/C MISS WERNING 46B			WW	73.4
	MISS YARDLEY G117		PAY THE PRICE			YW	102.6
			MISS YARDLEY S7			MK	25.4
						PAP	NA
H/P/S	WDA	TG	RIB FAT	REA	% IMF	DWR	
P	2.75	2.99	0.2	10.98	2.68	1@98	



Profit driven sire of L366

**140 YARDLEY LAD L335**

3/4 SM 1/4 AN		BD 2/25/2023		ASA 4242891		DATA	
TJ CHIEF	TJ FROSTY	IRONHIDE				BW	78
		TJ 58B				WW	566
	TJ 52A	TJ NEW TIME LINE				YW	1117
		T J MISS DAY R1				CE	12.1
		NICHOLS MANIFEST T79				BW	-1.6
MISS YARDLEY Z19		NICHOLS LEGACY				WW	65.8
		NICHOLS MCM N13				YW	101.7
		OCC JETFECK				MK	29.5
	MISS YARDLEY X69	MISS YARDLEY L148				PAP	33
H/P/S	WDA	TG	RIB FAT	REA	% IMF	DWR	
P	2.92	3.44	0.17	11.87	2.57	10@99	

L335's beautiful bodied, proven Nichols Manifest dam has done a tremendous job producing exceptional calves both in terms of production and profitability. As a first calf heifer she weaned a 730# bull that went on to sell for \$7,250 to Robert John of Portage UT. The following year she weaned a 724# sale day favorite that sold for \$10,000 Steven Tew of Talmage UT.



\$10,000 maternal brother to L335's dam



# YARDLEY

## CATTLE CO.

### SIRE LINEUP

Three separate breeds, three individual herds of cattle, one common goal. Our focus in all three breeds is to produce cattle with rib shape, dimension, solid tops, easy fleshing, and be structurally sound and functional. We will continue to focus on solid cow families combined with powerful herd sires. Semen Available on most sires.

#### THSF LOVER BOY B33

**POLLED PB SM BD 10/16/2014 ASA 2983443**

**SIRE: HTP/SVF DURACELL T52 BY DREAM ON**

**DAM: BUILT RIGHT X 3C MACHO BY MEYER 734**

CALVING EASE SIRE SUPREME. 2016 NWSS Supreme Champion Simmental Bull. He is the number one Simmental bull in semen sales for Cattle Visions in 2021. His calves are very stylish and correct and have good growth, performance, and eye appeal. Our cattle have to do a lot of walking so we are very fussy about good feet and legs. He is the most correct legged bull we saw in Denver. His dam was the Grand Champion Simmental female at the 2009 American Royal Show in Kansas City. Many of the bred cows and heifers in this sale carry his service. You Need To Try Him. Hetero Black Homo Polled. Owned by Gib and Denise Yardley and Griswold Cattle CO.

DATA	
BW	70
WW	876
YW	
CE	13.3
BW	-0.2
WW	86.5
YW	120.7
MK	26.6

SEMEN	
	\$40



#### YARDLEY STANDOUT E270

**3/4 SM 1/4 AN BD 2/8/2017 ASA 3308871**

**SIRE: THSF LOVER BOY B33 BY HTP/SVF DURACELL**

**DAM: MISS YARDLEY C136 BY YARDLEY HIGH REGARD**

Standout's name says it all. Since he was a calf he always had a stylish look about him and leading performance. His two-year-old dam is very feminine fronted, deep bodied, easy fleshing and ideal uddered. Standout was her first calf with a birth weight of 72 pounds, weaning weight of 773 pounds without creep, and a yearling weight of 1338. His extended front end and smooth shoulder give him added eye appeal and increase calving ease. His beautiful dam, C136, has entered the donor pen at an early age joining his grandam, Y22 who has been super productive. Consistency is coming from both sides of the pedigree here. Hetero Black, Homo Polled.

DATA	
BW	72
WW	759
YW	1326
CE	12.9
BW	0.2
WW	82.7
YW	127.5
MK	32.8

SEMEN	
	\$30



Miss Yardley Y22 grandam of Standout.

#### W/C BANCHOR 46D

**POLLED 3/4 SM 1/4 AN BD 2/12/2016 ASA 3182241**

**SIRE: CCR ANCHOR 9071B**

**DAM: W/C MISS WERNING 46B BY LOCK N LOAD**

W/C Banchor 46D has been fun to see in our pastures all summer. He is loaded with depth of body, thickness and muscle, excellent feet quality, good haired, and a blazed face to top it all off. He stayed sound and fat all summer while doing a great job of getting the cows bred. He has a nice slope to his shoulder and a disposition that can't be beat. He is sired by CCR Anchor 9071B, whose progeny have highlighted many sales over the last year. They have proven themselves as sound, functional, real world cattle that just work. His dam Miss Werning 46B is a daughter of the great 715T donor cow and has had multiple full sisters sell for over \$10,000. The maternal backing behind Banchor gives us great confidence in the future of him and his offspring. He is a proven heifer bull. We have had 16 calves out of him this year and haven't had to touch one. He throws a lot of stylish calves. Owned with Chad Ruda of Nebraska. Homo black, Hetero polled.

DATA	
BW	86 ET
WW	846
YW	1300
CE	14.2
BW	-1.2
WW	73.9
YW	102.9
MK	25.5

SEMEN	
	\$30



CALVING EASE EXTRAORDINAIRE!



**YARDLEY ABUNDANCE G280****HOMO POLLED 1/2 SM 1/2 AN BD 2/1/19 ASA 3621542****SIRE: W/C BANCHOR****DAM: MISS YARDLEY E232 X BUSHWACKER**

Abundance was the pick of our '19 calf crop to keep as an impressive herdsire. He is a soft made, stylish fronted, bull with ideal leg and foot structure. He has a very balanced EPD profile with many traits ranking in the top 15% of the breed. His excellent disposition has landed him a docility EPD in the top 1% of the breed. His deep-bodied dam has an impeccable udder with plenty of milk and the ability to breed back while working hard. Abundance's sire, Banchor, is making a huge impact on our herd with daughters that are moderate, deep-bodied, easy-fleshing, heavy milking, and extremely feminine. Homo black Homo polled.

DATA	
BW	82
WW	716
YW	1501
CE	13.3
BW	-0.3
WW	81
YW	133.1
MK	26.9

SEMEN	
	\$30

**SFI ACHIEVEMENT F10B****PB SIMMENTAL BD 2/10/2018 ASA 3442359****SIRE: LLSF PAYS TO BELIEVE BY CNS PAYS TO DREAM****DAM: SFI MISS LACEY BY HOOKS SHEAR FORCE 38K**

SFI Achievement F10B, was the '19 anchor bull in Schaae Farms pen of Five NWSS Pen of Five Champion Simmental Bulls! He's awesome footed, deep bellied, big topped, smooth jointed and nice fronted; one of the best, complete packages in the show with awesome performance and an intriguing set of numbers which is just icing on the cake! Achieve is an attractive, soft-made, purebred that will do great things. Homo black Hetero polled.

DATA	
BW	71
WW	764
YW	1373
CE	18.7
BW	-2.6
WW	73.7
YW	117.9
MK	25

SEMEN	
	\$30



The powerful dam of Achievement.

**YARDLEY TOP NOTCH C371****POLLED PB SM BD3/8/2015 ASA 3080653****SIRE: SANDEEN UPPER CLASS 2386****DAM: HSF VICTORIA P30 BY NICHOLS BLK DESTINY**

Top Notch is the exciting result of the \$55,000 Sandeen Upper Class crossed on HSF Victoria P30, who has had over \$500,000 in offspring sales and reigns as the leading donor for Hecksels of Minnesota, and the producer of another successful donor phenomena, HSF Baby Doll W959. Top Notch is loaded with exceptional mass and performance in a moderate made easy-keeping package. His width and massive rib shape afford him the ability to moderate cattle without moderating weaning weight. Top Notch is a breed changer. His first calf crop topped our 2018 bull sale averaging nearly \$7,200 including high-selling bull, going for \$15,000 Yardley Topline. Homo black Homo polled.

DATA	
BW	13.
WW	710
YW	1444
CE	15.1
BW	0
WW	61.4
YW	81.6
MK	17

SEMEN	
	\$30

**YI HILIGHT D413****P 5/8 SM 5/16 AN 1/16 MX BD 3/7/2016 ASA 3220182****SIRE: YARDLEY HIGH REGARD BY YARDLEY IMPRESSIVE****DAM: MISS YARDLEY Z28 BY SAV MUSTANG 9134**

Highlight is everything that his name implies when it comes to performance, thickness, soundness, and eye appeal. His deep bodied dam has all the middle you can pack into one with a feminine front end and beautiful udder. She raises heavy calves and stays fat while doing it. Hetero Back Homo Polled.

DATA	
BW	82
WW	720
YW	1419
CE	10.3
BW	-0.3
WW	69.9
YW	103.9
MK	25.2

SEMEN	
	\$30





**SFI HOT CHILLI PEPPER J7D****POLLED PB SM BD 1/20/2021 ASA 3934766****SIRE: GEFF COUNTY O****DAM: SFI SHES A BOMB D7 BY HIGH VOLTAGE**

We have been on the search for quite some time to find a red bull with all of the bells and whistles to add to the herd with the ever-increasing demand for quality red Simmentals. When we encountered "Hot Pepper" we knew we had found the bull that would fit the ticket. From the heart of Schaake's elite '22 pen of three Reserve Champion bulls at the Cattlemen's Congress. He is a naturally proud headed individual with an impressive amount of bone and muscle. He has impeccable structure, awesome hair, and is loaded with width and red meat. He boasts one of the biggest ribeye's in their offering, a 17.04" with adequate IMF and a 41" scrotal. His dam has surfaced as one of their very best young cows that couples extreme growth with acceptable calving ease.

DATA	
BW	91
WW	816
YW	1341
CE	6.9
BW	3.2
WW	83
YW	118.9
MK	26.8

SEMEN	
	\$40

**WAGR MR REMEDY 1054J****POLLED PB SM BD 3/13/2021 ASA 3961824****SIRE: : SO REMEDY 7F****DAM: WAGR MS LIGHTNING 8157F**

Remedy 7F is the record setting Simmental bull that sold for \$530,000 in the '21. Remedy was then selected as the 2021 Cattlemen's Congress Grand Champion Simmental Bull. We were very impressed with his offspring on display at the Denver Stock show. When we took a trip through South Dakota and visited Chris Effling the Remedy calves again stood out. At the top of our list was his leadoff Remedy son, 1054J. He's got a soft look, cool and completely loaded with a ton of rib shape and dimension in a purebred, Homo Black, Homo Polled package. He is sure to improve phenotype while adding power and performance without increasing mature size. He moves out on a sound foot with style and tremendous quality that is even more impressive on the move.

DATA	
BW	87
WW	743
YW	1345
CE	7.6
BW	4.1
WW	83.4
YW	122.9
MK	21.3

SEMEN	
	\$30

**YARDLEY ATTRIBUTE H293****PB SM BD 02/16/2020 ASA 3785476****SIRE: SFI ACHIEVEMENT F10B****DAM: YARDLEY FINA F20 BY LOVER BOY**

Attribute is soft made, carries a smooth shoulder, and is super complete from any angle you look at him. His two-year old dam, was our prettiest heifer calf when she was weaned and continues to blossom. She is very feminine, has a beautiful udder, great feet and legs, and holds her flesh all while weaning a big calf. We used Attribute heavy on our heifers and are excited to see his progeny. Hetero black Homo polled.

DATA	
BW	77
WW	717
YW	1375
CE	14.8
BW	-1.6
WW	77.8
YW	119.5
MK	23.8

SEMEN	
	\$30

**YARDLEY ACCELERATE H380****3/4 SM 1/4 AN BD 3/6/2020 ASA 3785533****SIRE: SFI ACHIEVEMENT F10B****DAM: MISS YARDLEY E88 BY HIGH REGARD**

If you want to speed up the growth in your cattle then take a look at Accelerate. He stands on a big hoof and offers a tick more frame to help some of those more moderate cows wean a little bigger calf. His neat- uddered High Regard dam hits a home run every time. She gives plenty of milk and breeds back early every year. Her added dose of femininity, attractive front third, and rib shape are what everybody is looking for in a mother cow. We've been impressed with the calves by Achievement; with the proven cow family behind Accelerate he won't dissappoint. Homo black Hetero polled.

DATA	
BW	82
WW	720
YW	1489
CE	11.2
BW	-.2
WW	74
YW	124.6
MK	25

SEMEN	
	\$30





**YARDLEY GRANDSTAND H358****PB SM BD 2/29/2020 ASA 3785514****SIRE: YARDLEY STANDOUT E270****DAM: MISS YARDLEY F132 BY TOP NOTCH**

Grandstand has been an outlier from a young age. His square hip, long body, massive rib, and depth caught our eye from the beginning. Grandstand continued to impress through weaning and accelerated in the feedlot. His young, first calf heifer dam has a beautiful udder, is thick made, easy fleshing, square over the tailhead, and has an excellent disposition. She goes back to P199, an Angus cow that produced some of our prettiest half-blood Simmental cows. Maternal power runs deep here! Hetero black Homo polled.

DATA	
BW	84
WW	710
YW	1486
CE	14.7
BW	-5
WW	64.4
YW	101.2
MK	21

SEMEN
\$30

**YARDLEY PAY THE STAR G514****PB SM BD 2/7/2019 ASA 3622921****SIRE: SC PAY THE PRICE C11****DAM: MISS STAR ABOVE BY CUT ABOVE**

Pay the Star is the result of crossing two of the most known and recognized individuals in the Simmental breed; the back to back NWSS Supreme Champion Simmental bull, Pay the Price, and the renowned royal donor Miss Star Above owned by our great friend Ryan Schliff of Tree Lane Farms. This was no coincidental mating; when Ryan approached us about purchasing a flush out of Miss Star we both felt Pay the Price would be the best mating for this elite breed icon. Miss Star did not disappoint! Pay the Star came out looking good and he has continually gotten better with Age! He's bold in his design, smooth in his composition, stylish and correct; built right from the ground up with an excellent set of feet and legs. Homo black Homo polled.

DATA	
BW	109
WW	625
YW	1235
CE	10.5
BW	2
WW	66.1
YW	108.1
MK	20

SEMEN
\$30

**YARDLEY TOP GUN F379****POLLED 3/4 SM 1/4 ANGUS BD 3/3/2018 ASA 3526357****SIRE: Y1 TOP NOTCH BY SANDEEN UPPER CLASS****DAM: MISS YARDLEY Y134 BY OCC MISSING LINK**

Top Gun was in our sights as a future herd sire prospect when only a couple months old and only got better from there. He stood out with extreme depth of body, thickness, and muscle, and is backed by one of the best cows on the ranch, Miss Yardley Y134. She has an ideal udder, abundant milk, is easy-fleshing, has great feet, and a very attractive front. Y134 has a weaning weight ratio of 115 on her 5 calves with only a 84 pound birth weight average. She is also the dam of Yardley Man O' War proving that she can do it time and again. There is cow power in this pedigree! Homo black Homo polled.

DATA	
BW	85
WW	713
YW	1326
CE	13.6
BW	0.3
WW	72.8
YW	100.9
MK	24.1

SEMEN
\$30



Miss Yardley Y134, impressive dam of Yardley Top Gun.

**YARDLEY LAWMAN G282****POLLED 3/4 SM 1/4 AN BD 2/1/19 ASA 3621544****SIRE: SFG THE JUDGE****DAM: MISS YARDLEY E10 BY SAV PATRON**

Lawman is a masculine stud that exemplifies the traits we are trying to infuse in our cattle. His sheer length, width, and depth coupled with his impressive muscle and bone, led to an incredible performance record with scale mashing performance reflected in his 761# adj WW and an equally impressive 1,378# adj WW out of an impressive, heavy milking first calf heifer! He ranks in the top 10% of the breed for WW, YW, and CW. His maternal line traces back to T68, the profitable dam of \$30,000 Yardley High Regard. Lawman's maternal gran dam, Yardley Step Ahead was our '17 leadoff, \$14,000 bull selected by Griswold Cattle Company of Stillwater, OK. Homo black Homo polled.

DATA	
BW	94
WW	761
YW	1378
CE	9.6
BW	2.8
WW	82.3
YW	125.5
MK	22.6

SEMEN
\$30



SFG The Judge, sire of Yardley Lawman G282.



**SAV CATALYST 6704****ANGUS**      **BD 2/3/2016**      **AAA 18579117****SIRE: SAV RESOURCE 1441****DAM: SAV EMBLYNETTE 0491**

SAV Catalyst 6704 is the result of combining the ever popular SAV Resource 1441 and the dam of SAV West River 2066, SAV Emblynette 0491. Catalyst is phenotypically outstanding and complete as you can build one: masculine, loaded with thickness, volume and expressive muscle shape in a perfect-structured package. His gentle disposition, superior feet quality and large scrotal are added features. He earned a 205-day weight of 905 lbs. for a weaning ratio of 105 in a very competitive herd. His dam, SAV Emblynette 0491, is an elite low-birth producer by Final Answer. She balances a birth ratio of 95 with a weaning ratio of 104 on three calves and served in the SAV embryo program along with her dam and 20-year-old Pathfinder grandam. Owned with Genex Cooperative Inc & Schaff Angus Valley.

DATA	
<b>BW</b>	<b>70</b>
<b>WW</b>	<b>882</b>
<b>YW</b>	<b>1473</b>
<b>CE</b>	<b>3</b>
<b>BW</b>	<b>2.8</b>
<b>WW</b>	<b>64</b>
<b>YW</b>	<b>120</b>
<b>MK</b>	<b>24</b>

SEMEN
<b>\$30</b>



Grandam of SAV Catalyst and dam of SAV Patron.

SAV Resource 1441, the popular sire of Catalyst.

**YARDLEY CHALLENGER F286****ANGUS**      **BD 2/2/2018**      **AAA 19317381****SIRE: SAV CATALYST 6704 X SAV RESOURCE 1441****DAM: MISS YARDLEY D88 BY YARDLEY ROYAL JET**

If you like depth, thickness, and style, you'll love Challenger. As his dam's first calf he has set the bar extremely high for those that follow. He has a keen head, clean front, with plenty of extension, a very strong topline, with a stout hind leg and rump. Challenger is a very balanced bull standing on excellent feet and a disposition that can't be beat. His young dam has a perfect udder with small teats and plenty of milk.

DATA	
<b>BW</b>	<b>80</b>
<b>WW</b>	<b>718</b>
<b>YW</b>	<b>1310</b>
<b>CE</b>	<b>-1</b>
<b>BW</b>	<b>3.5</b>
<b>WW</b>	<b>49</b>
<b>YW</b>	<b>93</b>
<b>MK</b>	<b>28</b>

SEMEN
<b>\$30</b>



Yardley Royal Jet, the continually proven sire of Challenger.



Coleman Charlo, the massive sire of Rainmaker.

**SAV 654X RAINMAKER 7133****PB ANGUS**      **BD 2/23/2017**      **AAA 18911172****SIRE: COLEMAN CHARLO 0256 X OCC PAXTON****DAM: SAV BLACK CAP MAY 5853 BY SAV INTERNATIONAL**

Rainmaker is the complete package: calving-ease, performance, eye appeal, and structurally correct. I was looking for a heifer bull at Schaff's and when I saw him I could see he did a lot of things right. He had a strong top, deep body, square rump with a level tail head, impeccable hoof structure, and an attractive front third. We've been very pleased with his first set of calves and are keeping a son and many daughters for future breeding pieces. He PAPed and impressive 36 as a two-year old, which is important for high altitudes. If you want calving-ease without sacrificing performance, Rainmaker is your guy! Owned with Schaff Angus Valley, St. Anthony, ND.

DATA	
<b>BW</b>	<b>77</b>
<b>WW</b>	<b>919</b>
<b>YW</b>	<b>1503</b>
<b>CE</b>	<b>8</b>
<b>BW</b>	<b>-0.1</b>
<b>WW</b>	<b>48</b>
<b>YW</b>	<b>87</b>
<b>MK</b>	<b>29</b>

SEMEN
<b>\$30</b>





**YARDLEY CHARBROIL F260****PB ANGUS** **BD 1/14/18** **AAA 19335781****SIRE: COLEMAN CHARLO****DAM: MISS YARDLEY D56 BY SAV INTERNATIONAL**

Check out Charbroil. He's one beefy dude loaded with power and performance. Charbroil has it all; a clean front and smooth shoulder, with abundant rib shape and dimension. He is perfectly sound and smooth through his hooks, pins, and tail head. From behind he is wide based, filled in across the tail and has massive width extending all the way down through his lower quarter.

His elite first calf heifer dam did an exceptional job. His phenomenal feminine maternal grandam is the picture of perfection with true Angus breed character. Charbroil's sire, Charlo has produced more high dollar offspring in the past couple of years than about any bull in the breed including \$750,000 SAV President and \$450,000 Coleman Bravo.

DATA	
BW	78
WW	743
YW	1329
CE	5
BW	1.4
WW	57
YW	97
MK	24

SEMEN	
	\$30

**YARDLEY CHUNK G261****ANGUS** **BD 1/20/2019** **AAA 19549971****SIRE: COLEMAN CHARLO 0256****DAM: MISS YARDLEY E49 BY SAV PATRON**

Check out this meat wagon! He's been a standout and a ranch favorite from day one! He moves out on a powerful hip with exceptional depth of body, width and dimension in an attractive, well balanced package with an ideal leg set, a smooth level tail, and a strong top. His impressive first calf heifer dam did a tremendous job on this her first calf that ratioed 112 weaning with explosive growth from a mere 71# BW to an impressive 784# WW. His maternal line is as good as any on the ranch tracing back to cornerstone herd matrons Miss Yardley S19 and Miss Yardley C72.

DATA	
BW	71
WW	837
YW	1354
CE	9
BW	0.6
WW	60
YW	103
MK	34

SEMEN	
	\$20

**SAV PATRIOT 0942****PB ANGUS** **BD 12/26/2019** **AAA 19851723****SIRE: SAV PRESIDENT 6847****DAM: SAV MADAME PRIDE 5809 BY SAV INTERNATIONAL**

Patriot is an ultra-thick, super stout, heavy-quartered, stock bull with incredible muscle, shape, and fault-free design. He's unique in the fact that he has such a small head and attractive front end with such a massive body. His extraordinary dam is a maternal sister to SAV America, that sold for \$1.51 million, and she serves as a sixth generation SAV headliner donor. She presents a stellar phenotype with ultra-femininity and impeccable udder and feet quality – one of the very best to ever walk SAV pastures. Owned with Allen Brothers Cattle of North Powder, OR and Schaff Angus Valley of St. Anthony, ND.

DATA	
BW	76
WW	948
YW	1465
CE	6
BW	2.5
WW	69
YW	113
MK	26

SEMEN	
	\$30



SAV Madame Pride 5809

**YARDLEY CATTLEMAN J261****PB ANGUS** **BD 1/21/2021** **AAA 20271479****SIRE: SAV CATALYST X SAV RESOURCE 1441****DAM: MISS YARDLEY G601 BY COLEMAN BRAVO 6313**

Yardley Cattleman is as complete of an Angus package as we have made in terms of phenotype, pedigree, and performance. His dam is a royal mating of elite herd matriarch W172 who has produced two, featured high selling leadoff breeds at \$20,000 and \$16,500. Another daughter was a featured \$11,100 donor in '20 was the dam to our high selling \$24,000 heifer of our '16. Cattleman's maternal grandsire is the record setting \$450,000 Coleman Bravo! Cattleman boasts an impressive 720# WW and a 1,348# YW.

DATA	
BW	70
WW	720
YW	1348
CE	7
BW	0.9
WW	65
YW	117
MK	20

SEMEN	
	\$30





## REFERENCE SIRES



KCC1 EXCLUSIVE	CE	BW	WW	YW	MK
	12.9	0.7	72.3	101.6	4



TJ CHIEF 460 G	CE	BW	WW	YW	MK
	13.6	-1.2	86.3	132.6	27.6



MR SR71 RIGHT NOW	CE	BW	WW	YW	MK
	14.9	-1.9	88.6	139.2	25.9



LLSF DRAFT PICK	CE	BW	WW	YW	MK
	13.2	1.2	85	122.7	22.4



KING OF DIAMONDS	CE	BW	WW	YW	MK
	13.2	1.7	68.8	97.2	21.6



LLSF VANTAGE POINT	CE	BW	WW	YW	MK
	13.6	1.3	83.6	129.2	22.4



LCDR AFFIRMED	CE	BW	WW	YW	MK
	15.3	0.1	95.3	140.6	27.6



UP THE ANTE	CE	BW	WW	YW	MK
	12.2	0.7	63.6	99.8	30.1



YARDLEY WIDE RANGE	CE	BW	WW	YW	MK
	-	-	-	-	-



COLEMAN BRAVO 6313	CE	BW	WW	YW	MK
	15	-0.2	52	97	22



KR SYNERGY	CE	BW	WW	YW	MK
	11	-2.4	70	112	22



COLEMAN ROCK	CE	BW	WW	YW	MK
	12	-0.2	71	125	24



LD CAPITALIST 316	CE	BW	WW	YW	MK
	12	-0.6	66	113	26



GCC GOLD STANDARD	CE	BW	WW	YW	MK
	14	-2.1	32	56	25



YARDLEY CHARBROIL	CE	BW	WW	YW	MK
	7	0.8	53	90	24



# NOTES





**YARDLEY**  
CATTLE CO.

P.O. Box 1059  
Beaver UT 84713  
435-310-1725

## **First Class**

DO NOT DELAY - TIME DATED MATERIAL  
**ADDRESS SERVICE REQUESTED**

DON'T MISS OUR NEXT ANNUAL FOCUS ON THE FEMALE SALE  
***SATURDAY, NOVEMBER 23, 2024***

